



Chedworth Corner, Sillars Green, Tetbury Road

Malmesbury

£529,995

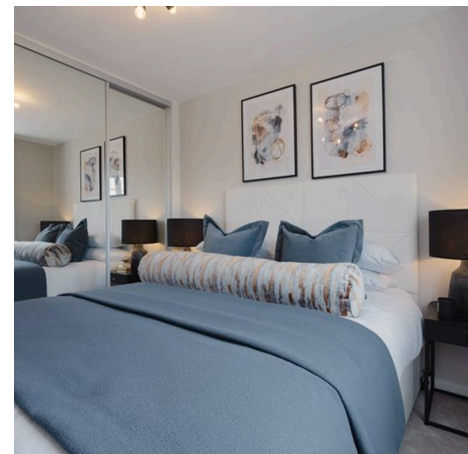
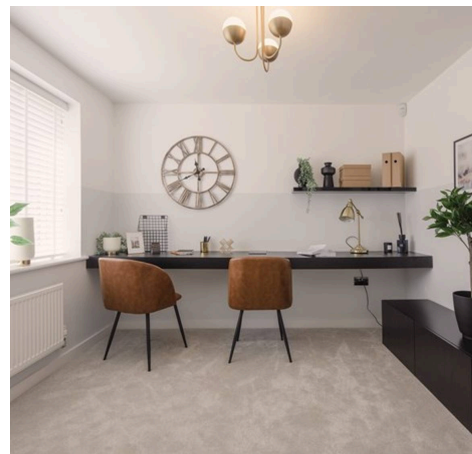
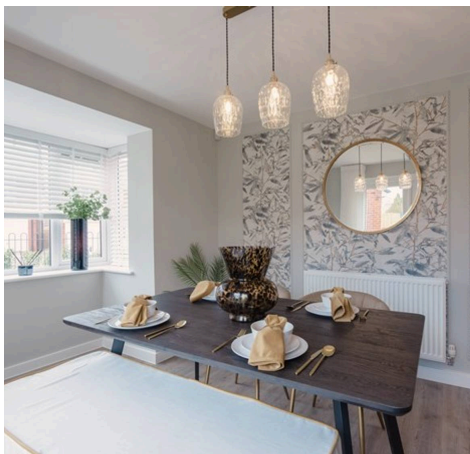


Chedworth Corner, Sillars Green

Tetbury Road, Malmesbury

Nestled in a sought-after location, this IMPRESSIVE and BRAND NEW DETACHED house is a testament to contemporary living at its finest. Boasting a total of FOUR SPACIOUS BEDROOMS, including a luxurious EN-SUITE to the master, this property offers ample space for families or those who love to entertain. The TWO RECEPTION ROOMS provide the perfect setting for both relaxation and social gatherings, while the inclusion of a UTILITY ROOM and WC adds a touch of practicality to the home. Added bonuses include a SINGLE GARAGE and TWO PARKING SPACES, ensuring convenience for the modern homeowner. With its charming ambience and ample room for outdoor furniture, this garden presents endless possibilities for creating your own outdoor haven. Make this EXECUTIVE HOME yours and experience the epitome of comfortable living in a serene and picturesque setting.

- NEW BUILD
- DETACHED
- FOUR BEDROOMS
- TWO RECEPTIONS
- SINGLE GARAGE
- TWO PARKING SPACES
- EN-SUITE TO MASTER
- UTILITY
- WC



Entrance Hall

Living Room

13' 4" x 10' 9" (4.06m x 3.28m)

Dining Room

9' 11" x 10' 10" (3.01m x 3.31m)

Kitchen/Family Room

9' 7" x 20' 3" (2.93m x 6.18m)

Utility

WC

Landing

Bedroom 1

11' 5" x 11' 0" (3.49m x 3.35m)

En-Suite

Bedroom 2

11' 7" x 8' 6" (3.53m x 2.60m)

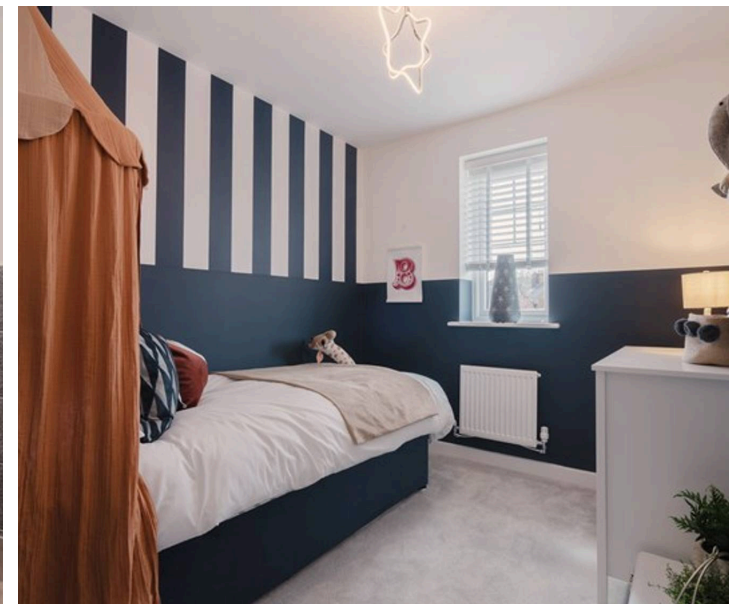
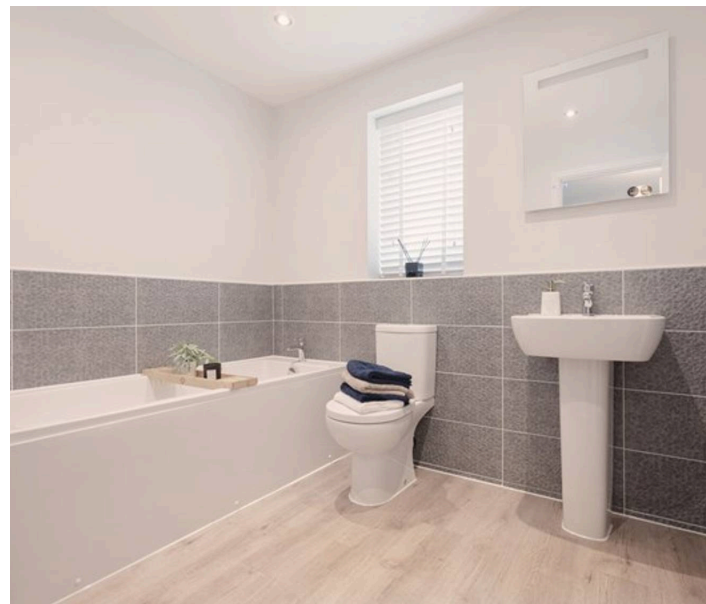
Bedroom 3

9' 11" x 9' 1" (3.01m x 2.76m)

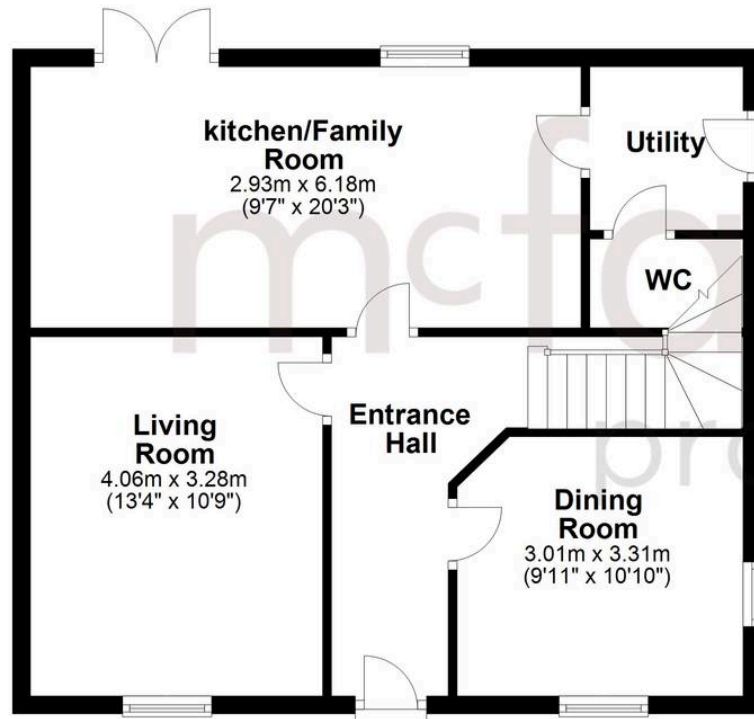
Bedroom 4/Study

8' 4" x 7' 9" (2.54m x 2.36m)

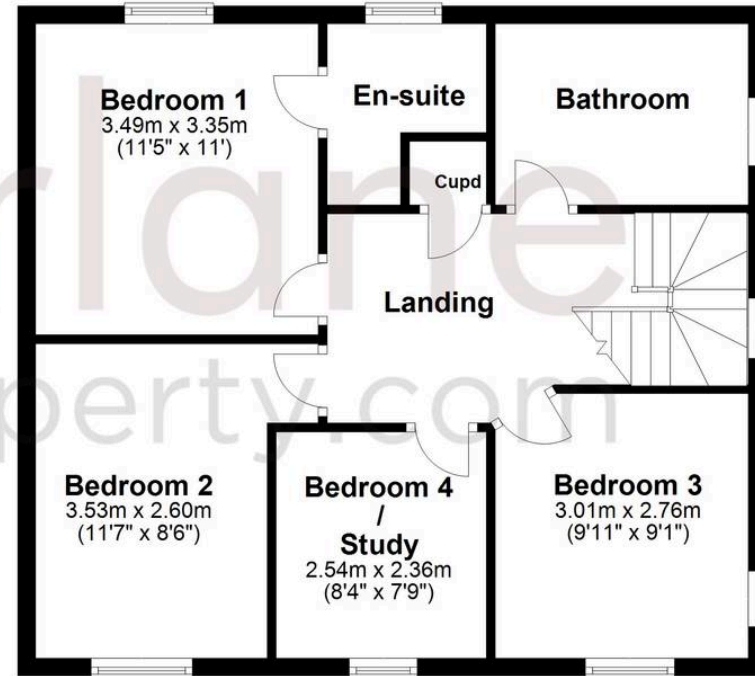
Bathroom



Ground Floor



First Floor



McFarlane Sales & Lettings

North Swindon, Redhouse Village Centre, Swindon - SN25 2FW

01793 296600 • swindon@mcfarlaneproperty.com • www.mcfarlaneproperty.com/