

66 Ousebank Way, Stony Stratford – MK11 1LB

£1,500,000 Freehold

5 Bedroom Detached (potential annexe) • 43' Dining/Family Room Opens into 34' Kitchen/Breakfast Room • Principle Bedroom with Dressing Area, En-suite & Integral Balcony • 5 Bathrooms • Double Garage & Separate Single Garage • River Great Ouse and Open Countryside to Rear • Completely Refurbished, Extended & First Floor Added • Under-floor Heating to Majority of Ground Floor • Bluetooth speakers in ground floor ceilings • 5 hard wired ring cameras around the property • New log burner being installed

Reception Hall

Butterfly staircase gives access to galleried first floor landing, radiator.

Cloakroom

Refitted white suite comprising, wash hand basin with storage under and WC with hidden cistern, half height tiling to all walls.

Lounge

20' 5" x 18' 5" (6.22m x 5.61m)

Window to front, window to side, fireplace.

Dining/Family Room

43' 7" x 15' 3" (13.28m x 4.65m)

Cinema Room

15' 6" x 11' 8" (4.72m x 3.56m)

Lantern style skylight, air-conditioning installed, radiator.

Office

15' 10" x 12' 9" (4.83m x 3.89m)

Window to side, lantern style skylight, air-conditioning installed, radiator, bi-fold door to garden.

Kitchen/Breakfast Room

34' 7" x 14' 5" (10.54m x 4.39m)

Fitted with a matching base and eye level units with worktop space over, matching breakfast bar, island unit, 1+1/2 bowl sink unit with "Quooker" tap, integrated fridge, 3 built in ovens, hob, coffee machine, 2 wine coolers, fridge, freezer and dishwasher, window to rear, lantern style skylight, bi-fold door to garden.

Utility Room

11' 2" x 7' 9" (3.40m x 2.36m)

Fitted with a matching range of base and eye level units with worktop space over, sink unit with mixer tap, plumbing for washing machine, door to garden.

Inner Lobby

Bedroom 5

13' 8" x 10' 6" (4.17m x 3.20m)

Window to side, radiator.

Bathroom

White suite comprising corner bath with shower attachment and inset wash hand basin with storage under, WC with hidden cistern, tiled surround, window to rear, heated towel rail, tiled flooring.

First Floor Landing

Galleried overlooking reception hall, picture window to front, two skylights, two radiators.

Bedroom 1

15' 10" x 14' 0" (4.83m x 4.27m)

Steps and bi-fold doors give access to an integral balcony with views to rear. Separate dressing area with a range of fitted wardrobes. Skylight, radiator.

En-suite Bathroom

White suite comprising corner bath, separate double shower enclosure, "his & her" wash hand basins with storage under, WC with hidden cistern, tiled surround, window to rear, heated towel rail.

Bedroom 2

20' 0" x 14' 2" (6.10m x 4.32m)

Window to rear, built in wardrobe, radiator, double door with Juliet balcony to rear, ladder gives access to a mezzanine.

En-suite Bathroom

White suite comprising spa style bath with shower and shower attachment over, wash hand basin with storage under, WC with hidden cistern, tiled surround, window to side, radiator.

Bedroom 3

17' 9" x 15' 0" (5.41m x 4.57m)

Window to front, radiator, walk in wardrobe.

En-suite Bathroom

White suite comprising free standing bath, wash hand basin with storage under and double shower cubicle, WC with hidden cistern, tiled surround, skylight, radiator.

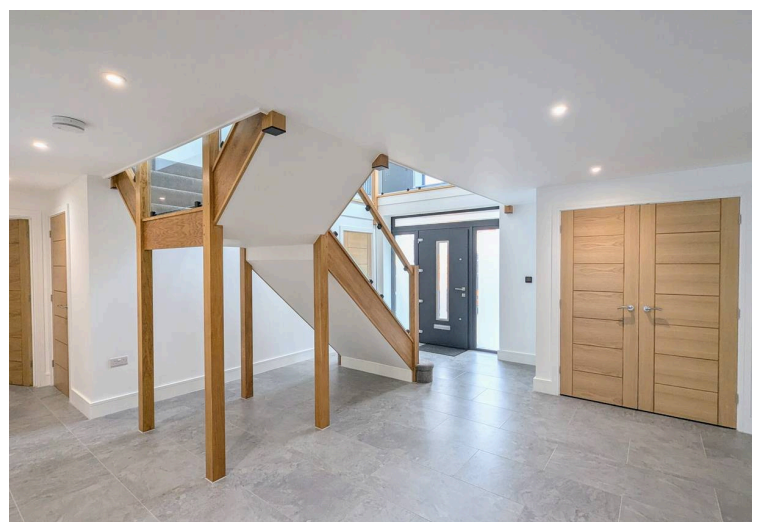
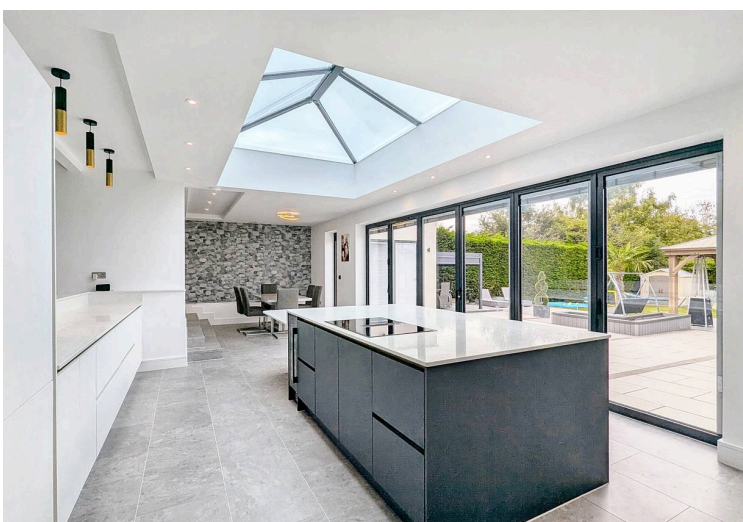
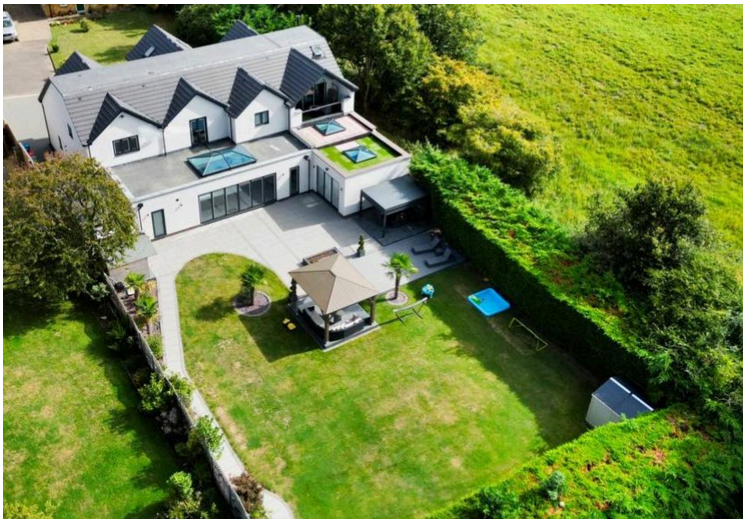
Bedroom 4

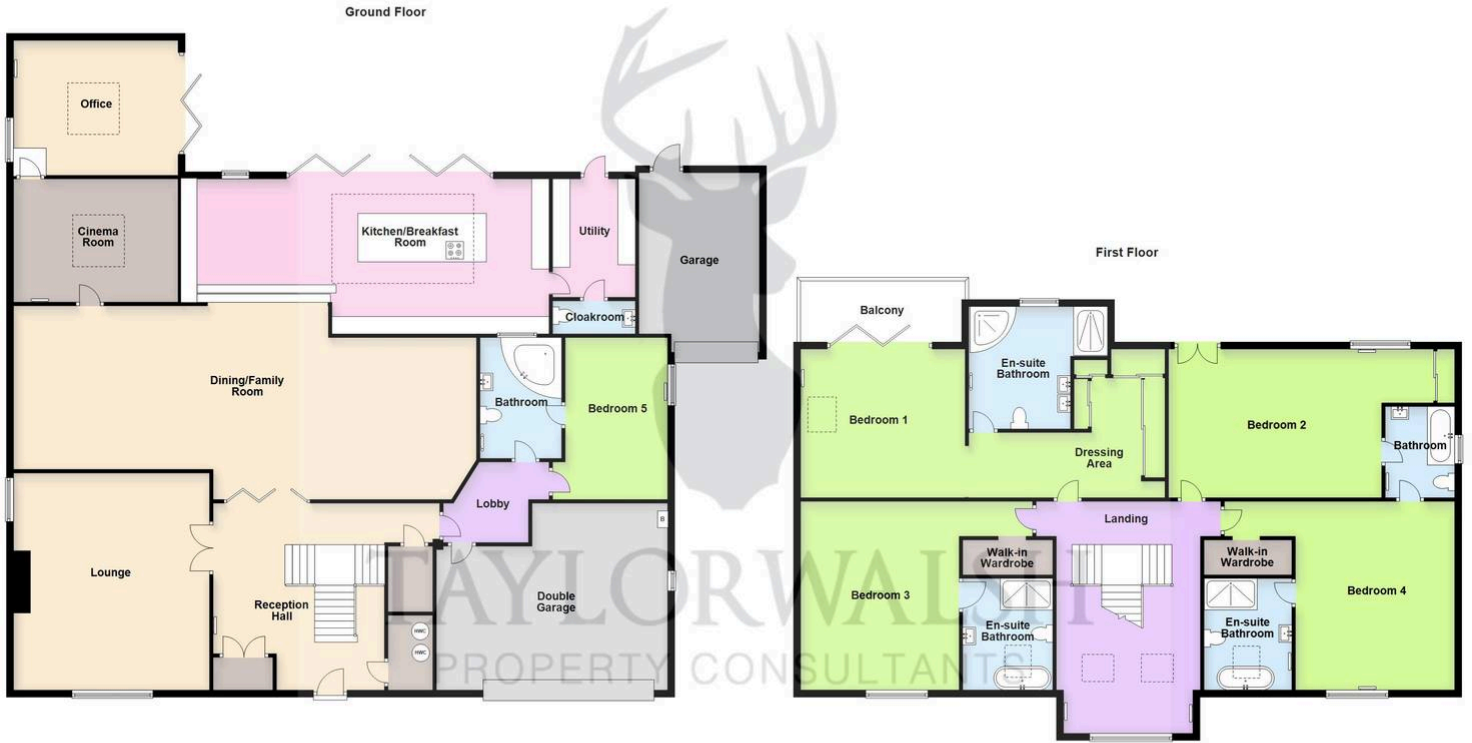
17' 5" x 15' 0" (5.31m x 4.57m)

Window to front, radiator, walk in wardrobe.

En-suite Bathroom

White suite comprising free standing bath, wash hand basin with storage under and double shower cubicle, WC with hidden cistern, tiled surround, skylight, radiator.





The floor plan is for illustration purposes only.
 Plan produced using PlanUp.

www.taylorwalsh.co.uk