

6 Cheviot Meadows, Acklington

£725,000 Freehold

Five Bedroom Detached • Immaculately Presented • Solid Oak Staircase • Double Garage • Must See Property
• Cinema Room • Landscaped Garden to Rear • High Specification Throughout

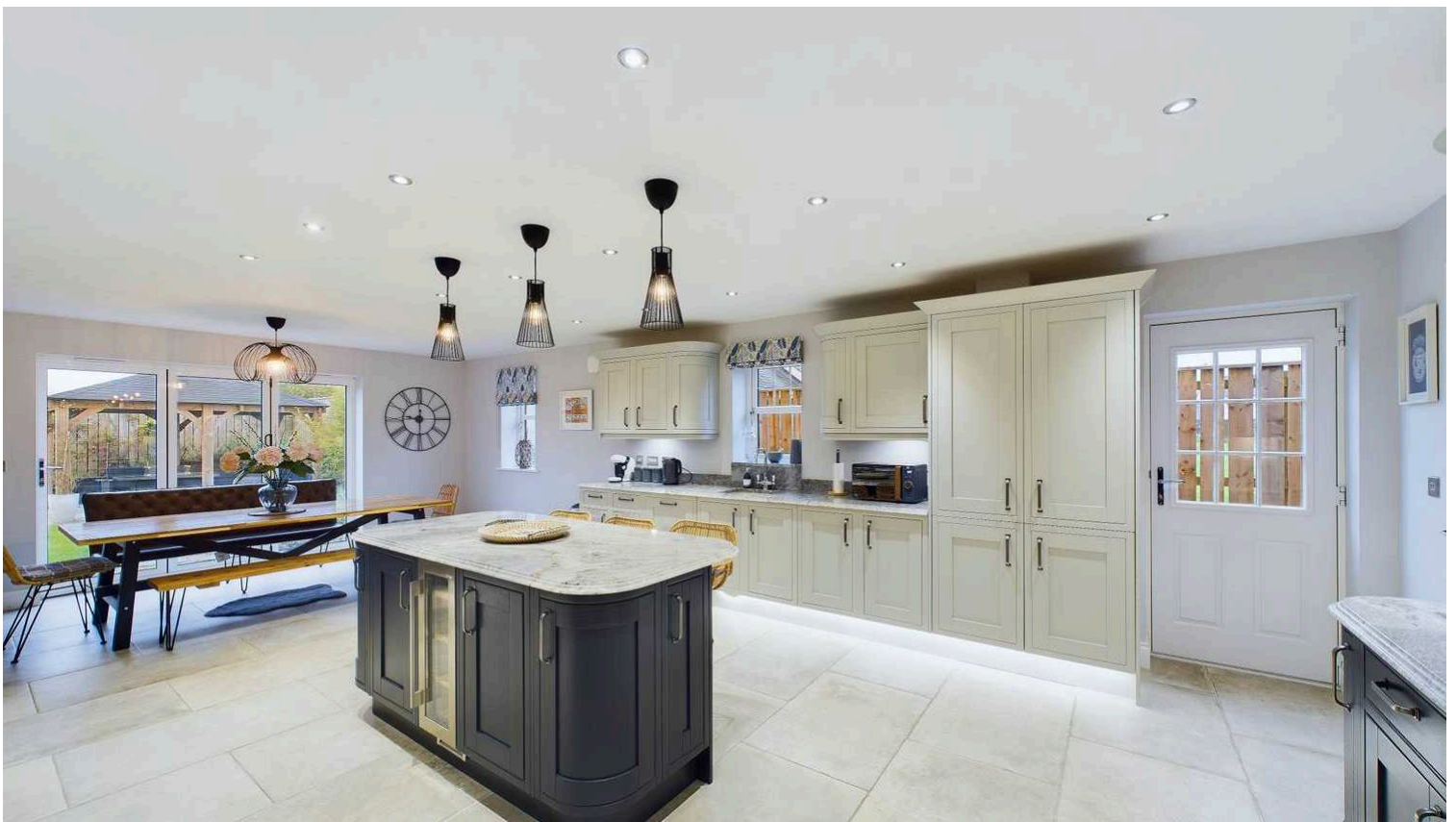


Northumberland
Properties



Northumberland Properties are excited to present an exquisite, modern residence situated in the peaceful village of Acklington. This five-bedroom detached home provides contemporary living with an exceptional level of craftsmanship and design throughout. Upon entry, the property immediately impresses with a spectacular oak staircase, spanning three floors through the centre of the home, making it a stunning feature on every floor.

The generously sized living room and kitchen, offer ample space for family living. The bedrooms are particularly spacious, with two of the five bedrooms enjoying private ensuite bathrooms. Every bathroom in the home is fully tiled to a high specification, adding a touch of elegance and easy maintenance. Designed for leisure and entertainment, the property also boasts a dedicated cinema room—ideal for family movie nights or hosting friends in style.

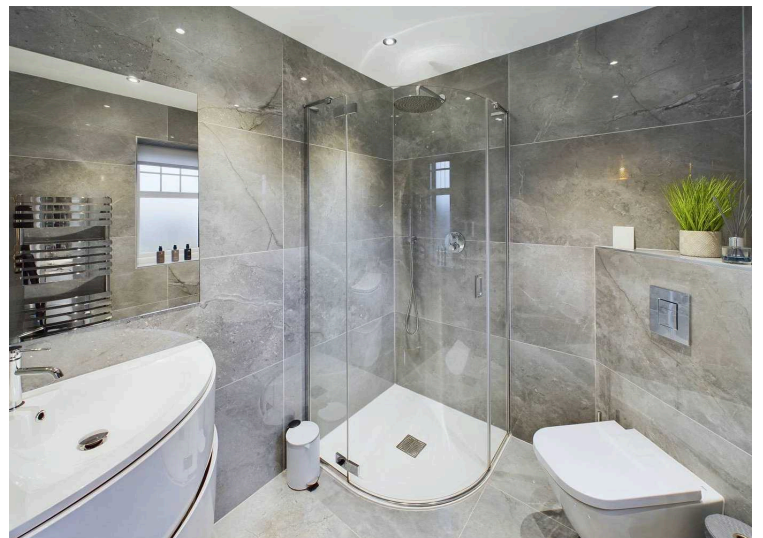
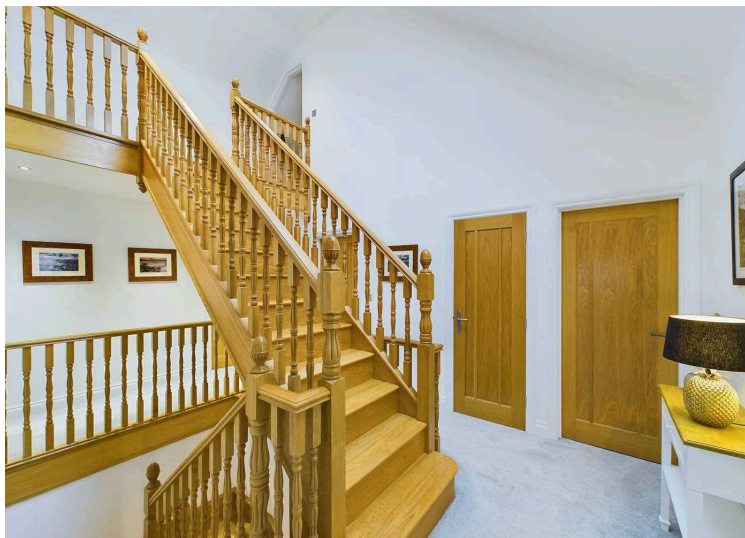
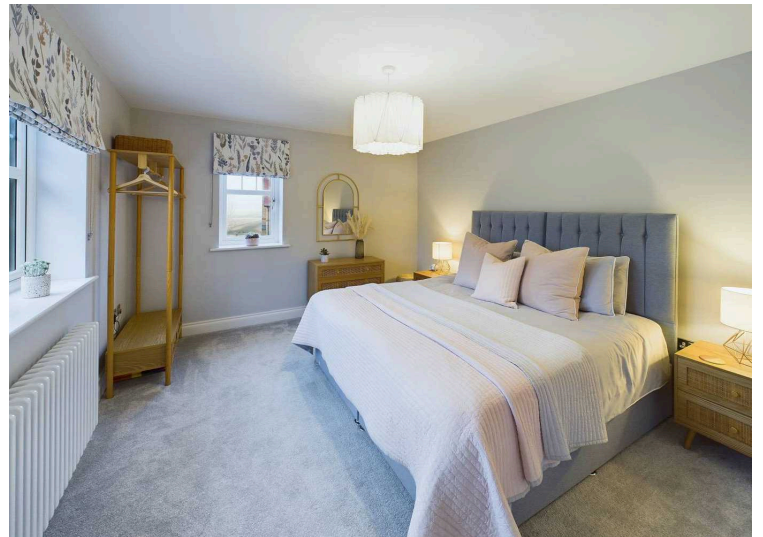


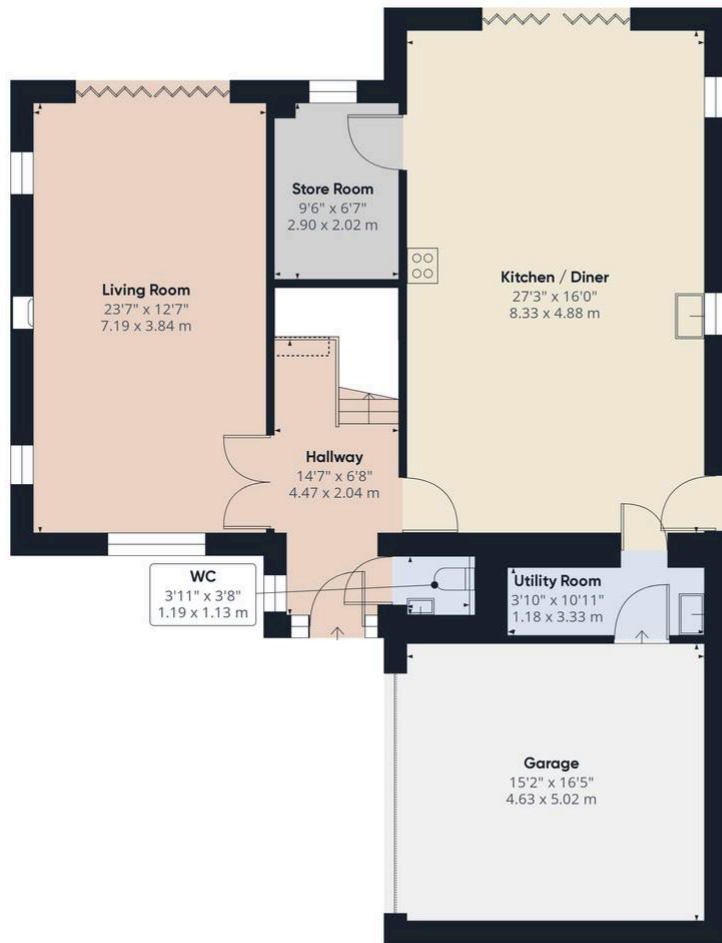
Outside, the landscaped rear garden is both beautiful and functional, featuring a lawn, a patio area, and a attractive pergola, perfect for outdoor dining or relaxation. To the front, a block-paved driveway provides ample parking space along with the double integrated garage featuring Electric doors, adding to the property's convenience and curb appeal.

Located on a small, exclusive estate, this attractive home is still under its new-build warranty, giving peace of mind to prospective buyers.

Situated near the Northumberland coastline and within easy reach of larger towns, Acklington provides a perfect balance of rural living with access to essential amenities. Ideal for families and those seeking a peaceful lifestyle, this property offers both luxury and comfort in one of the most beautiful areas of the region.







First Floor

Approximate total area⁽¹⁾
1236.76 ft²
114.9 m²

Reduced headroom
2.72 ft²
0.25 m²

(1) Excluding balconies and terraces

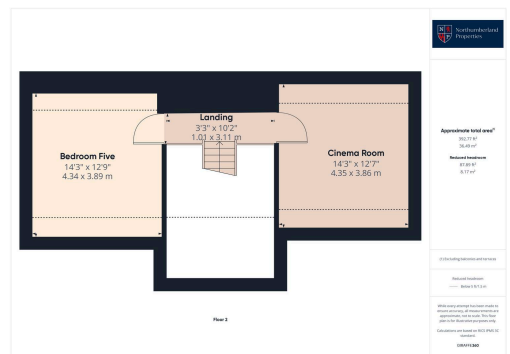
Reduced headroom
..... Below 5 ft/1.5 m

While every attempt has been made to ensure accuracy, all measurements are approximate, not to scale. This floor plan is for illustrative purposes only. Calculations are based on RICS IPMS 3C standard.

GIRAFFE360



Floor 1



Floor 2

You can include any text here. The text can be modified upon generating your brochure.