



FINDING YOU A HOME  
SINCE 1972  
**B**

**Sycamore Cottage - Rental Le Mont De La Barcelone, St. Mary**  
£8,500 PCM

**BROADLANDS**

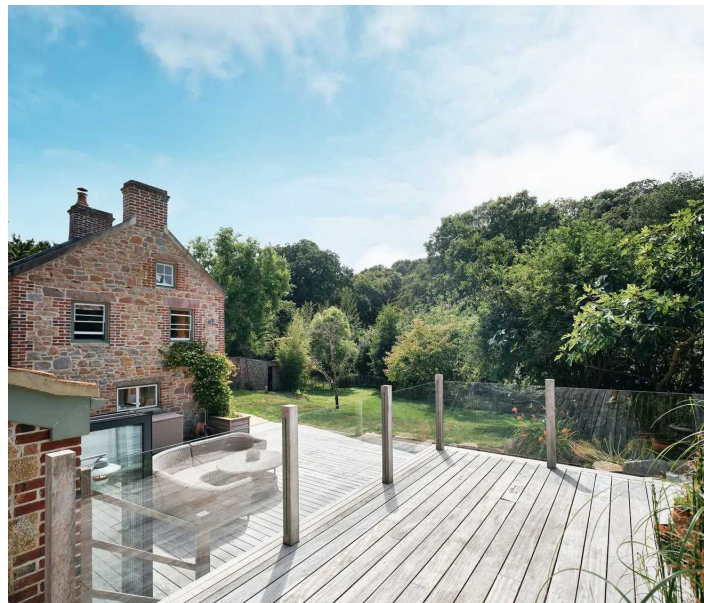
FINDING YOU A HOME SINCE 1972

# Sycamore Cottage - Rental Le Mont De La Barcelone

St. Mary, Jersey

From La Route de Saint-Jean, turn into La Rue d'Enfer, follow the road and turn slight right into Le Mont de la Barcelone. Sycamore Cottage is immediately on the left.

- Magical home in St Mary, a true one off
- Four bedrooms/ three bathrooms, including lovely main suite
- Three reception rooms; stunning family room, cosy living room with granite fireplace & dining room
- Beautiful handcrafted kitchen plus utility room
- Meticulously restored and extended to the highest standard
- Private sunny gardens, including large decked area, natural swimming pool, lawned areas and vast woodland
- Outdoor home office with kitchen and WC facilities tucked away in the garden
- Hidden paradise in Le Mourier Valley
- Gated driveway parking for 8 cars
- Contact Allison 07797750720  
allison@broadlandsjersey.com or Erica on 07797712094



## Sycamore Cottage - Rental Le Mont De La Barcelone

St. Mary, Jersey

Incredible detached house in beautiful mature landscaped private grounds with character in abundance, located in the St Mary countryside. If you are looking for something a little bit special, which is brilliantly unique and in a magical setting, then the wait is over! Winner of the Jersey Architectural Awards 2019, this detached, four bedroom granite home has undergone a complete professional renovation and extension program. Offering top spec interiors, the property offers; beautiful handcrafted kitchen, utility room, family room with wood burning stove and wall to wall bifold doors opening to the magnificent terrace, dining room and cosy living room with granite fireplace, four double bedrooms, including lovely main suite with dressing room and ensuite plus two further bathrooms. Totally private, with far reaching woodland views, set in beautiful mature landscaped gardens with all day sunshine, stunning natural swimming pool, large decked area, lawned area and vast woodland with 300m edible hedge - this is a true hidden paradise. Gated driveway with parking for 8 cars, plus large store for bikes, an additional store for garden equipment and a fully equipped garden office with kitchenette and WC. Peacefully located, nearby an abundance of scenic cliffpath walks and a short distance to village amenities.





### **Living**

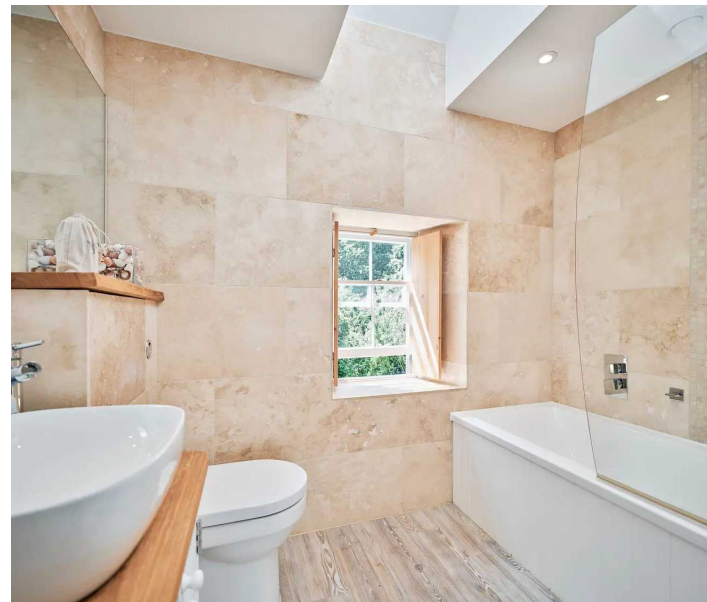
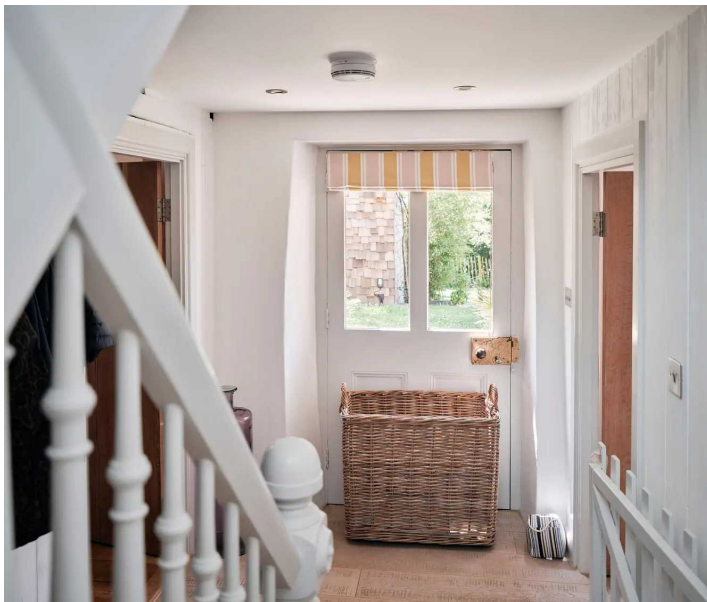
Superb entertaining space with large fully fitted kitchen, leading to a fantastic family room with bifold doors and wood burning stove, further dining room and cosy living room with granite fireplace

### **Sleeping**

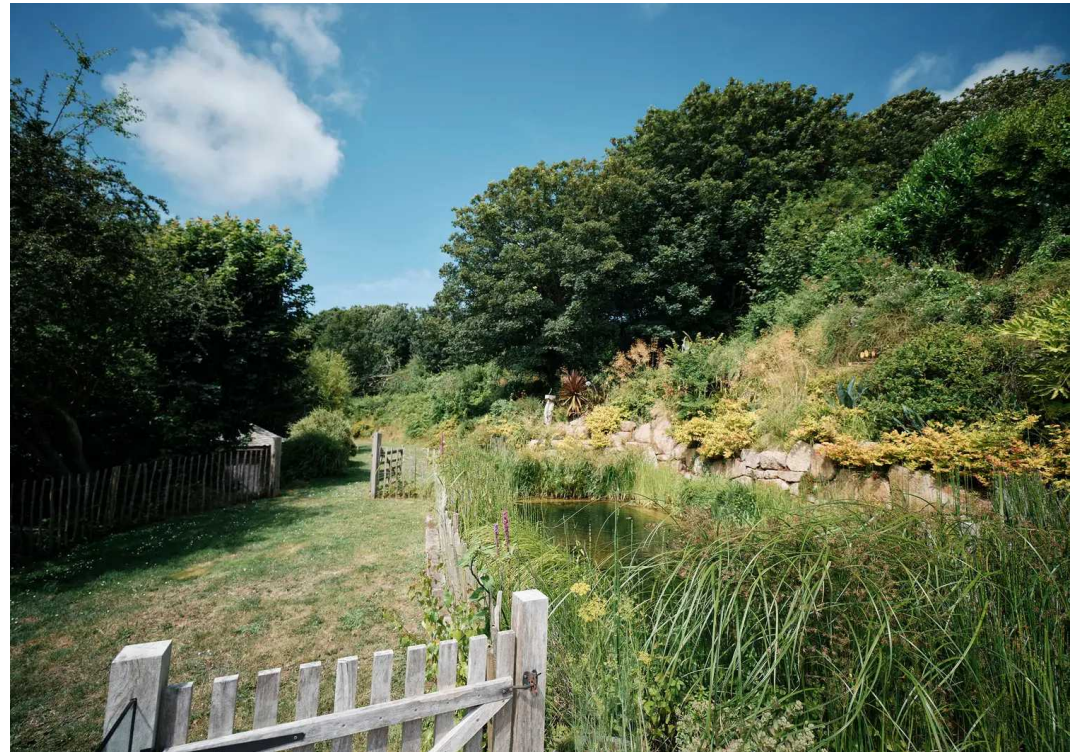
Beautiful main suite with dressing room and ensuite bathroom, plus three further double bedrooms and two bathrooms.

### **Services**

Mains water and tight tank. Heating via air source heat pump. Available early February to licensed/ entitled residents. Pets by arrangement. Will consider a short term rental.

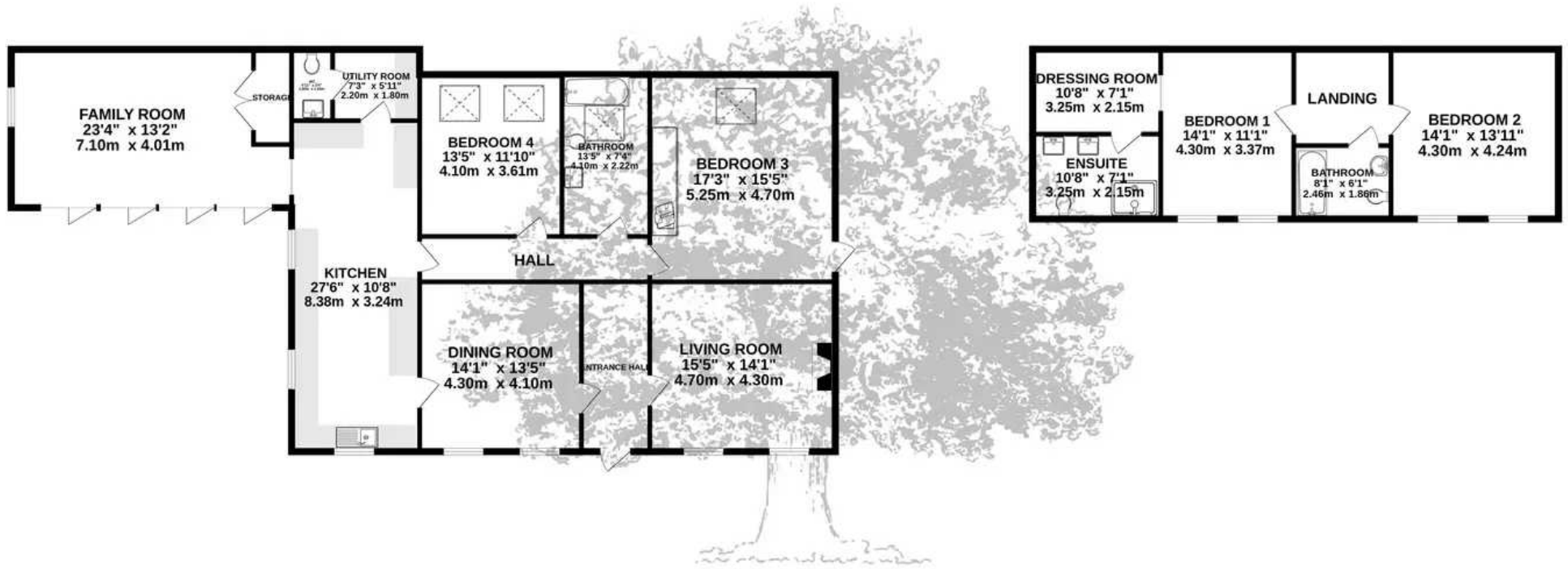






**GROUND FLOOR**  
1738 sq.ft. (161.5 sq.m.) approx.

**1ST FLOOR**  
616 sq.ft. (57.3 sq.m.) approx.



**TOTAL FLOOR AREA : 2355 sq.ft. (218.7 sq.m.) approx.**

Whilst every attempt has been made to ensure the accuracy of the floorplan contained here, measurements of doors, windows, rooms and any other items are approximate and no responsibility is taken for any error, omission or mis-statement. This plan is for illustrative purposes only and should be used as such by any prospective purchaser. The services, systems and appliances shown have not been tested and no guarantee as to their operability or efficiency can be given.

Made with Metropix ©2023



## Broadlands

Broadlands Estates, Library Place - JE2 3NL

01534 880770 • [enquiries@broadlandsjersey.com](mailto:enquiries@broadlandsjersey.com) • [www.broadlandsjersey.com/](http://www.broadlandsjersey.com/)

# BROADLANDS

FINDING YOU A HOME SINCE 1972