



11 Raven Way, Shrivenham

Swindon

£425,000

mcfarlane
property.com



11 Raven Way Shrivenham, Swindon

Welcome to this charming THREE BEDROOM DETACHED HOME located in a peaceful village setting. This beautifully presented property boasts a modern Kitchen/Diner perfect for family meals and entertaining guests. The single garage and driveway parking ensure convenience for all.

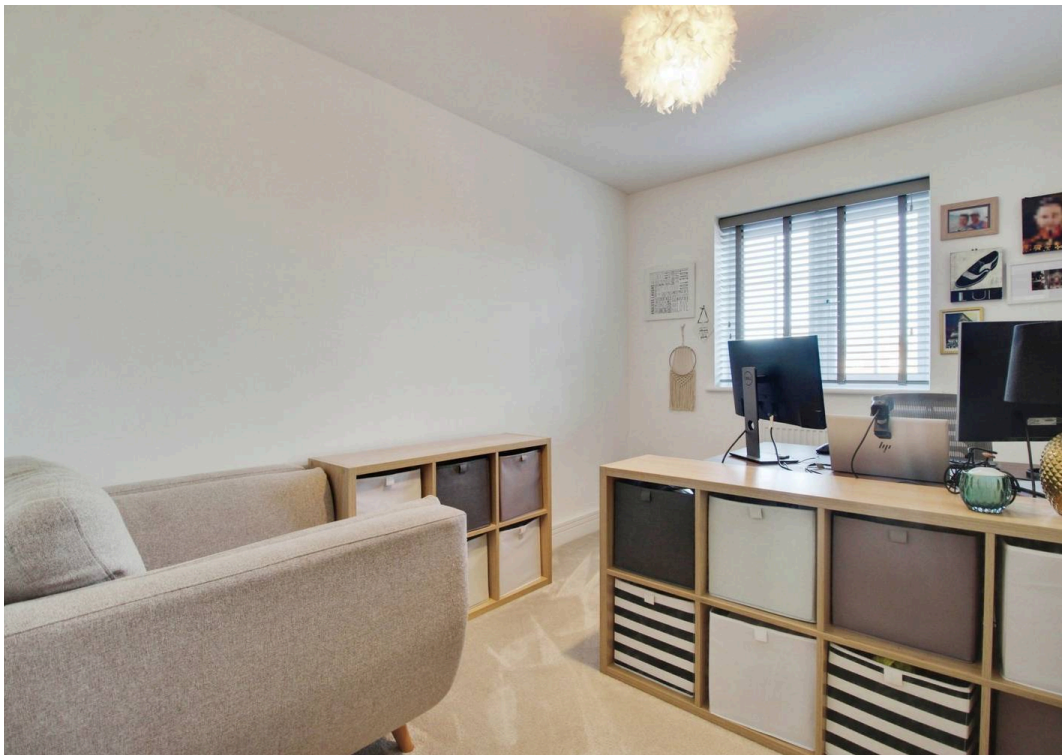
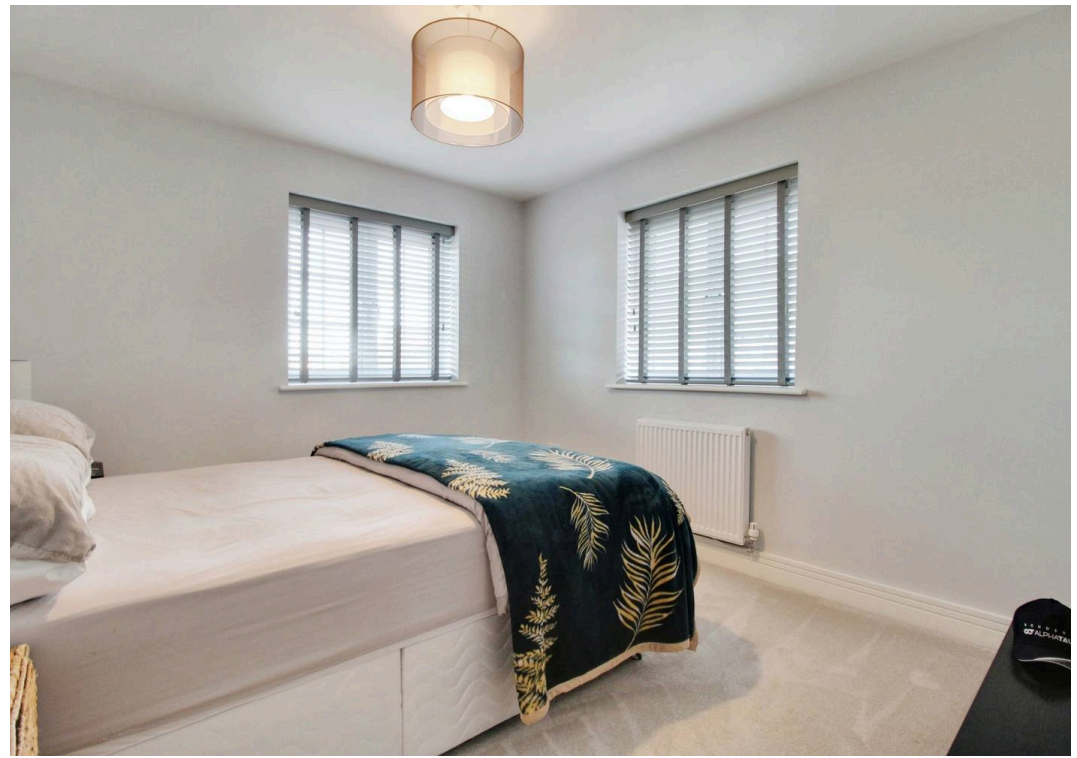
With a NHBC Warranty for peace of mind, this home offers both quality and comfort. The SOUTH FACING GARDEN is ideal for soaking up the sun and enjoying outdoor activities.

Conveniently situated, this home provides easy access to local amenities while still offering a tranquil escape from the hustle and bustle. The spacious layout of this property provides a wonderful living space perfect for families or those who love to entertain.

Don't miss out on the opportunity to make this home your own. Contact us today to arrange a viewing!



- THREE BEDROOM HOME
- DETACHED HOME
- SINGLE GARAGE AND DRIVEWAY PARKING
- BEAUTIFULLY PRESENTED
- DOWNSTAIRS CLOAKROOM
- KITCHEN/DINER
- VILLAGE LOCATION
- NHBC WARRANTY
- SOUTH FACING GARDEN



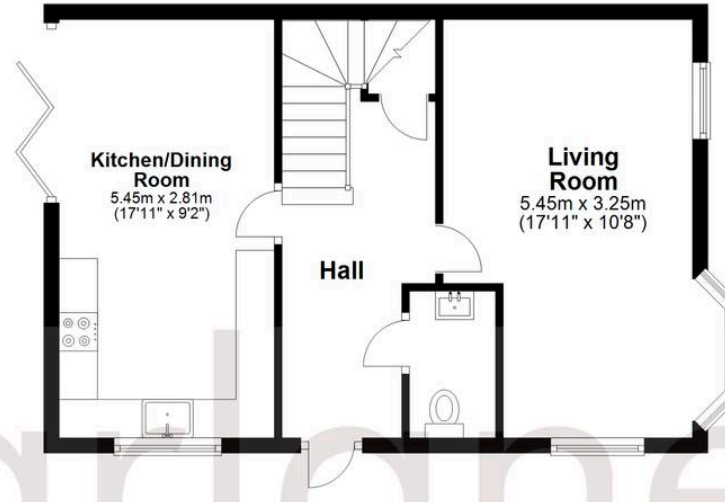
Garage

Approx. 17.7 sq. metres (190.9 sq. feet)



Ground Floor

Approx. 45.2 sq. metres (486.9 sq. feet)



First Floor

Approx. 44.8 sq. metres (482.7 sq. feet)



Total area: approx. 107.8 sq. metres (1160.4 sq. feet)

McFarlane Sales & Lettings

North Swindon, Redhouse Village Centre, Swindon - SN25 2FW

01793 296600 • swindon@mcfarlaneproperty.com • www.mcfarlaneproperty.com/