

CWB

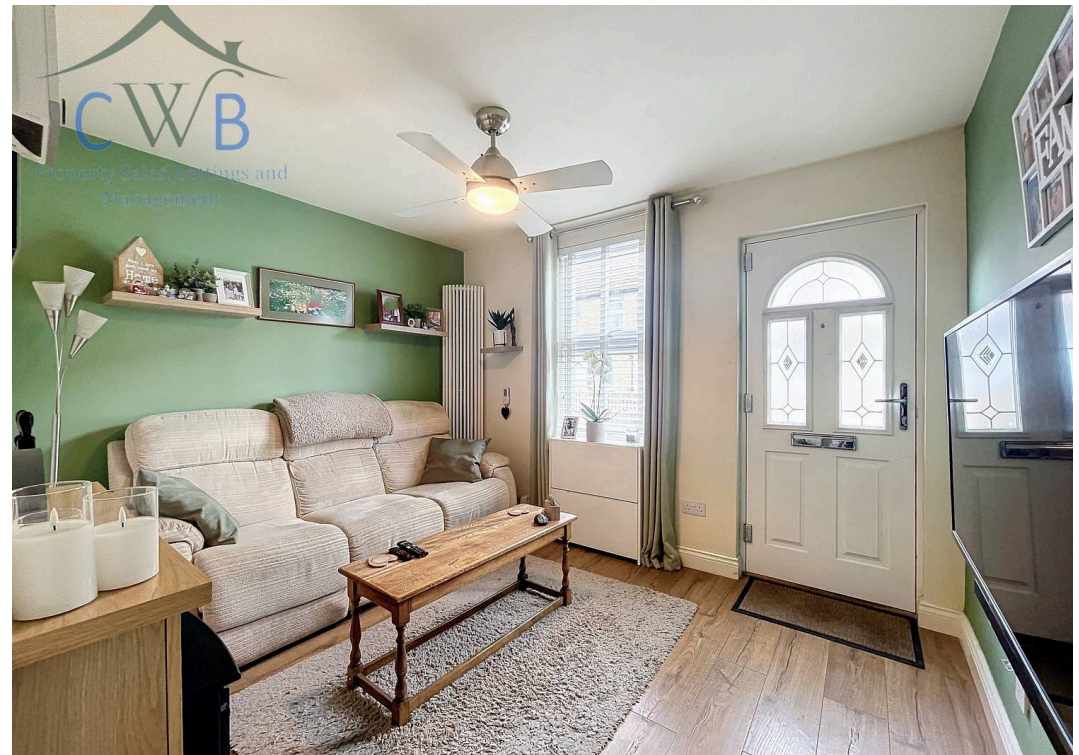
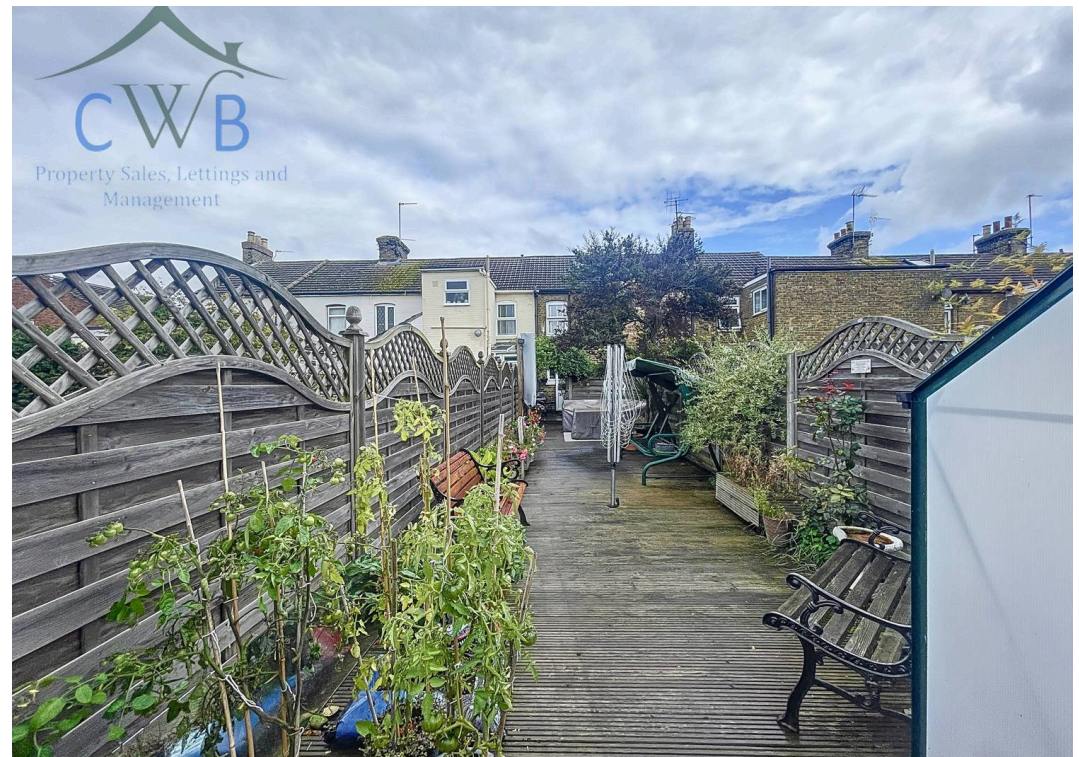
Property Sales, Lettings and  
Image



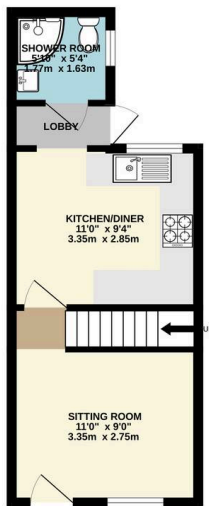
19 Portland Place, Snodland

Snodland

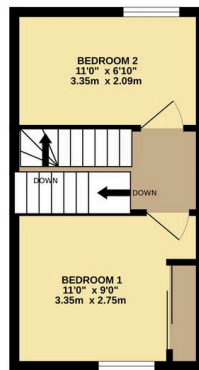
Guide Price £280,000



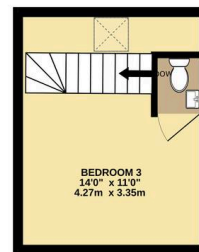
GROUND FLOOR  
276 sq.ft. (25.6 sq.m.) approx.



1ST FLOOR  
229 sq.ft. (21.3 sq.m.) approx.



2ND FLOOR  
154 sq.ft. (14.3 sq.m.) approx.



TOTAL FLOOR AREA - 659 sq.ft. (61.2 sq.m.) approx.

Whilst every attempt has been made to ensure the accuracy of the floorplan contained here, measurements of doors, windows, rooms and any other items are approximate and no responsibility is taken for any error, omission or mis-statement. This plan is for illustrative purposes only and should be used as such by any prospective purchaser. The services, systems and appliances shown have not been tested and no guarantee as to their operability or efficiency can be given.  
Made with Metropix ©2024



# 19 Portland Place

Snodland, Snodland

Offered with NO FORWARD CHAIN!! This 3 bedroomed period terrace property won't be around for long!

Council Tax band: B

Tenure: Freehold

EPC Energy Efficiency Rating: E

EPC Environmental Impact Rating: E

- NO FORWARD CHAIN
- 3 DOUBLE BEDROOMS
- SOUTH FACING REAR GARDEN

