



15 Bromsgrove Street, Cardiff
£270,000





15 Bromsgrove Street

Cardiff, Cardiff

Council Tax band: D

Tenure: Leasehold

EPC Energy Efficiency Rating: D

EPC Environmental Impact Rating: E

Hallway

Enter via a recently installed composite front door with feature small panel obscured glass into a hallway with wood effect laminate flooring. Access to living room and dining room with an open tread staircase leading to the first floor. Complete with ceiling rose, spotlight and radiator.

Living room

Originally two reception rooms, the large open space is bright via double glazed windows to the front and rear of the property. Complete with electric feature fireplace, carpets, multiple power outlets and radiator.

Dining room

A spacious dining room, opening into the kitchen via an archway. Lit by a double glazed window to the side of the property. Complete with wood effect laminate flooring, ceiling rose, multiple power outlets and radiator.

Kitchen

Fitted with a range of wall and base units and work surfaces over with tiled splashback, one and a half bowl stainless steel sink with drainer and mixer tap, five ring gas hob and extractor fan, high level fitted electric cooker, integrated dishwasher and space for fridge/freezer and washing machine. Complete with double glazed window to rear and patio door with obscured glass to garden, ceiling rose with fan, multiple power outlets, tiled floor, radiator.

Landing

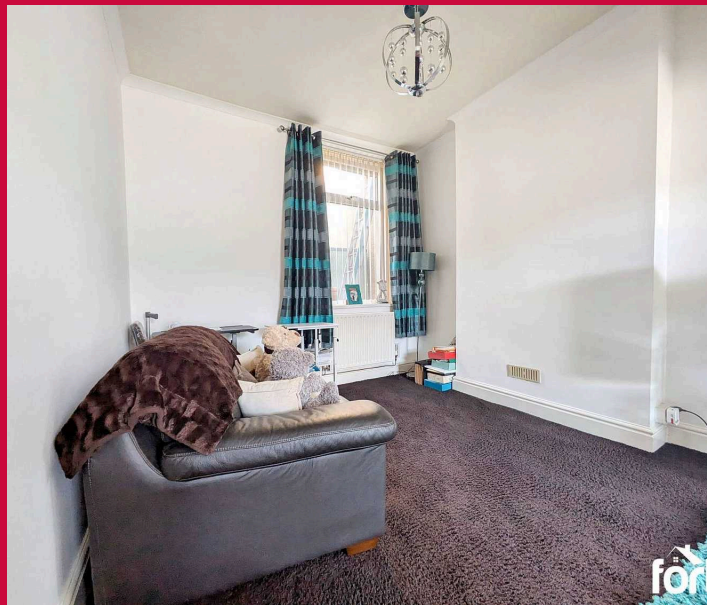
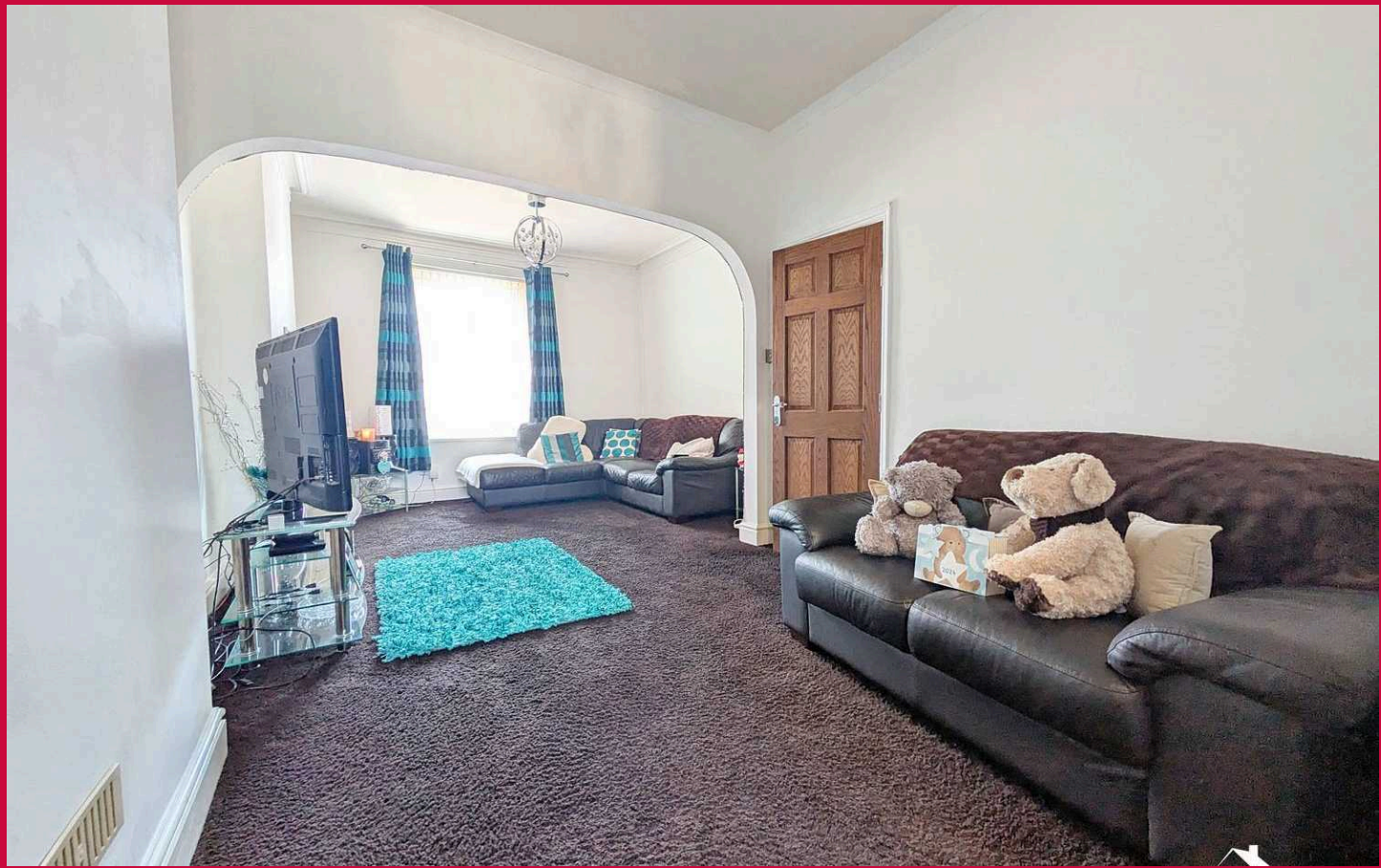
Carpeted landing with access to bedroom 1, 2, 3 and family bathroom. A handmade steel spiral staircase leads to the attic room. Complete with ceiling rose.

Bedroom 1

A large carpeted room with two double glazed windows to the fore. Fitted with mirrored wardrobes and complete with multiple power outlets, ceiling rose with fan and radiator.

Bedroom 2

A carpeted room complete with double glazed window to rear, radiator, ceiling rose and power outlets.



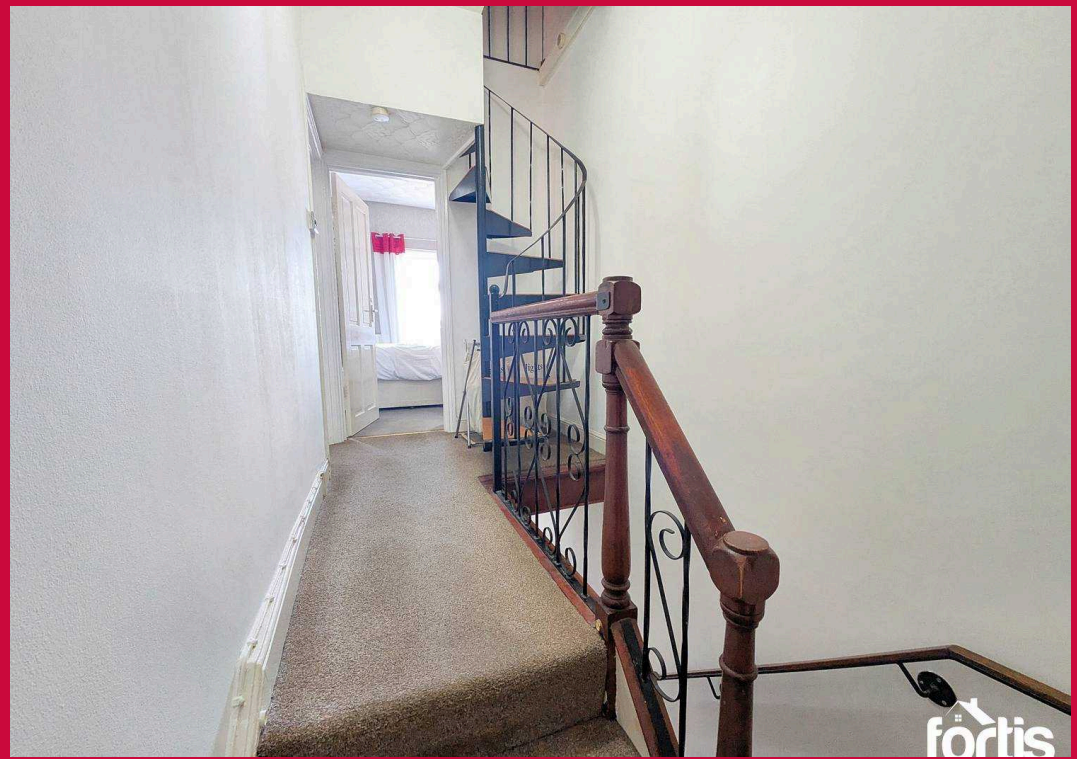


GARDEN

A private rear garden fitted with part decking, part AstroTurf.



fortis



fortis

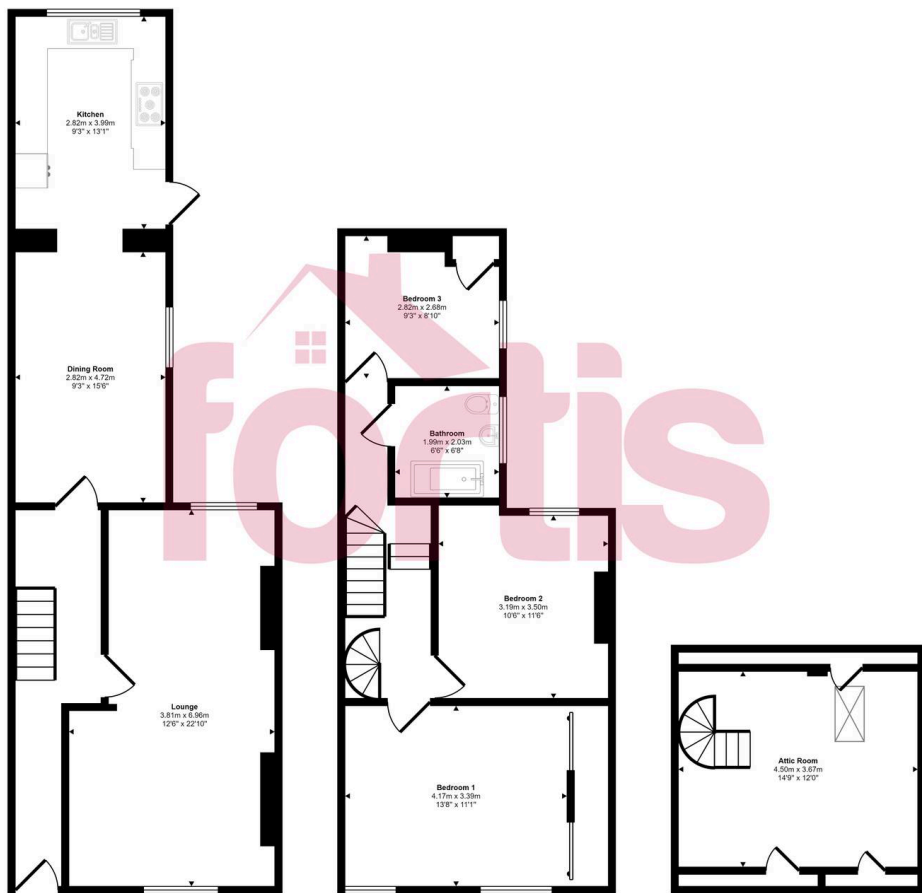


fortis



fortis

Approx Gross Internal Area
130 sq m / 1398 sq ft



Ground Floor
Approx 60 sq m / 647 sq ft

First Floor
Approx 50 sq m / 537 sq ft

Second Floor
Approx 20 sq m / 213 sq ft

This floorplan is only for illustrative purposes and is not to scale. Measurements of rooms, doors, windows, and any items are approximate and no responsibility is taken for any error, omission or mis-statement. Icons of items such as bathroom suites are representations only and may not look like the real items. Made with Made Snappy 360.



Fortis

Fortis Properties, 2A Fairwater Green - CF5 3BA

02920 561111 • hello@fortis.homes •