



26, Woodlawn Street, Whitstable  
£1,300 pcm





## 26, Woodlawn Street

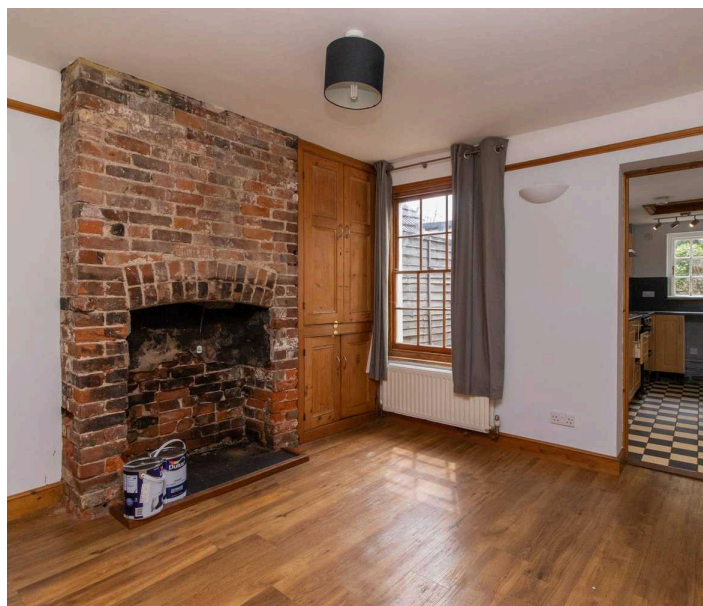
Whitstable, Whitstable

\* CHARMING TWO BEDROOM COTTAGE CLOSE TO WHITSTABLE TOWN CENTRE \* Internal viewing is recommended with this quirky two bedroom fisherman's cottage which is conveniently located to walk out of your front door and take a short stroll to the High Street shops, boutiques, restaurants and harbour. The ground floor accommodation comprises lounge, dining room then leading into a galley style kitchen. The first floor offers one double bedroom, one small single bedroom and a shower room. Low maintenance rear garden. Gas central heating system. One small pet considered, council tax band B. Available now.

EPC Rating D

To check broadband and mobile phone coverage please visit Ofcom here [ofcom.org.uk/phones-telecoms-and-internet/advice-for-consumers/advice/ofcom-checker](https://www.ofcom.gov.uk/phones-telecoms-and-internet/advice-for-consumers/advice/ofcom-checker).

- Upstairs Bathroom
- South Facing Garden
- Harbour and Beach Nearby
- Close Proximity to High Street
- Two Reception Rooms







**Entrance**

Leading to

**Kitchen**

12' 8" x 5' 0" (3.86m x 1.52m)

**Lounge**

10' 7" x 9' 9" (3.23m x 2.97m)

**Dining Room**

10' 9" x 9' 8" (3.28m x 2.95m)

**Bedroom**

11' 0" x 10' 0" (3.35m x 3.05m)

**Bedroom**

9' 0" x 6' 2" (2.74m x 1.88m)

**Shower Room**

Leading to







## Miles & Barr

125 High Street, Herne Bay - CT6 5LA

01227 740 840

[contactteam-lettings@milesandbarr.co.uk](mailto:contactteam-lettings@milesandbarr.co.uk)

[www.milesandbarr.co.uk/](http://www.milesandbarr.co.uk/)

In Compliance with the Consumer Protection from Unfair Trading Regulations 2008 we have prepared these lettings particulars as a general guide to give a broad description of the property. They are not intended to constitute part of an offer or contract. We have not carried out a structural survey and the services. All photographs, measurements, floorplans and distances referred to are given as a guide.