

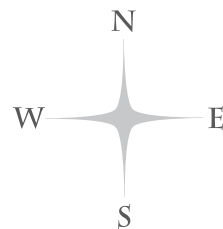
# FERN LODGE

## ASHTON

 THE HEATON  
3 BEDROOM HOME

 THE STAMFORD  
3 BEDROOM HOME

 THE CALDERDALE  
3 BEDROOM HOME



The site plan is drawn to show the relative position of individual properties. NOT TO SCALE. This is a two dimensional drawing and will not show land contours and gradients, boundary treatments, landscaping or local authority street lighting. Footpaths subject to change. For details of individual properties and availability please refer to your Sales Consultant.

**NHBC**

**CONSUMER  
CODE FOR  
HOME BUILDERS**

[www.consumercode.co.uk](http://www.consumercode.co.uk)

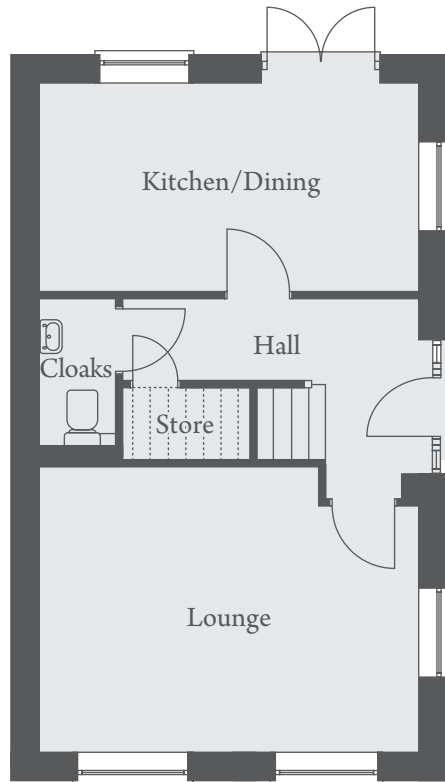
# THE CALDERDALE

THREE BEDROOM HOME



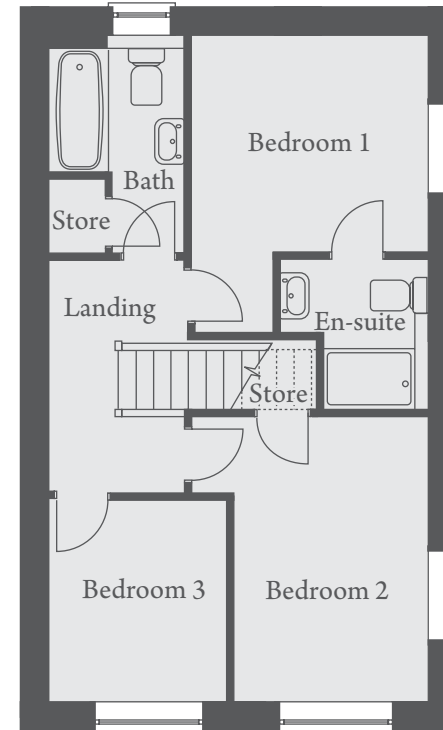
# THE CALDERDALE

## THREE BEDROOM HOME



### GROUND FLOOR

Kitchen/Dining ..... 5064 x 2900mm ..... 16'7" x 9'6"  
Lounge ..... 5064 x 3914mm ..... 16'7" x 12'10"



### FIRST FLOOR

Bedroom 1 ..... 3182 x 2990mm ..... 10'5" x 9'10"  
Bedroom 2 ..... 2639 x 3902mm ..... 8'8" x 12'10"  
Bedroom 3 ..... 2349 x 2805mm ..... 7'8" x 9'2"

Landscaping and configuration may vary from plot to plot. Please refer to Sales Consultant for further details. All dimensions are approximate and should not be used for carpet sizes, appliance spaces, or furniture. We operate a policy of continuous improvement and individual features such as kitchen and bathroom layouts, doors, windows, garages and elevational treatments may vary from time to time. Consequently these particulars should be treated as general guidance only and do not constitute a contract, part of a contract or a warranty.