

Compton

For Rent
**5 Crescent Row
Clerkenwell EC1**



Ground & Lower Ground Showroom Available With Double Height Ceilings in the heart of Clerkenwell

For Rent

5 Crescent Row
Clerkenwell EC1Y

Size

846 Ft²

Rent

£55 per sq ft

Fitout

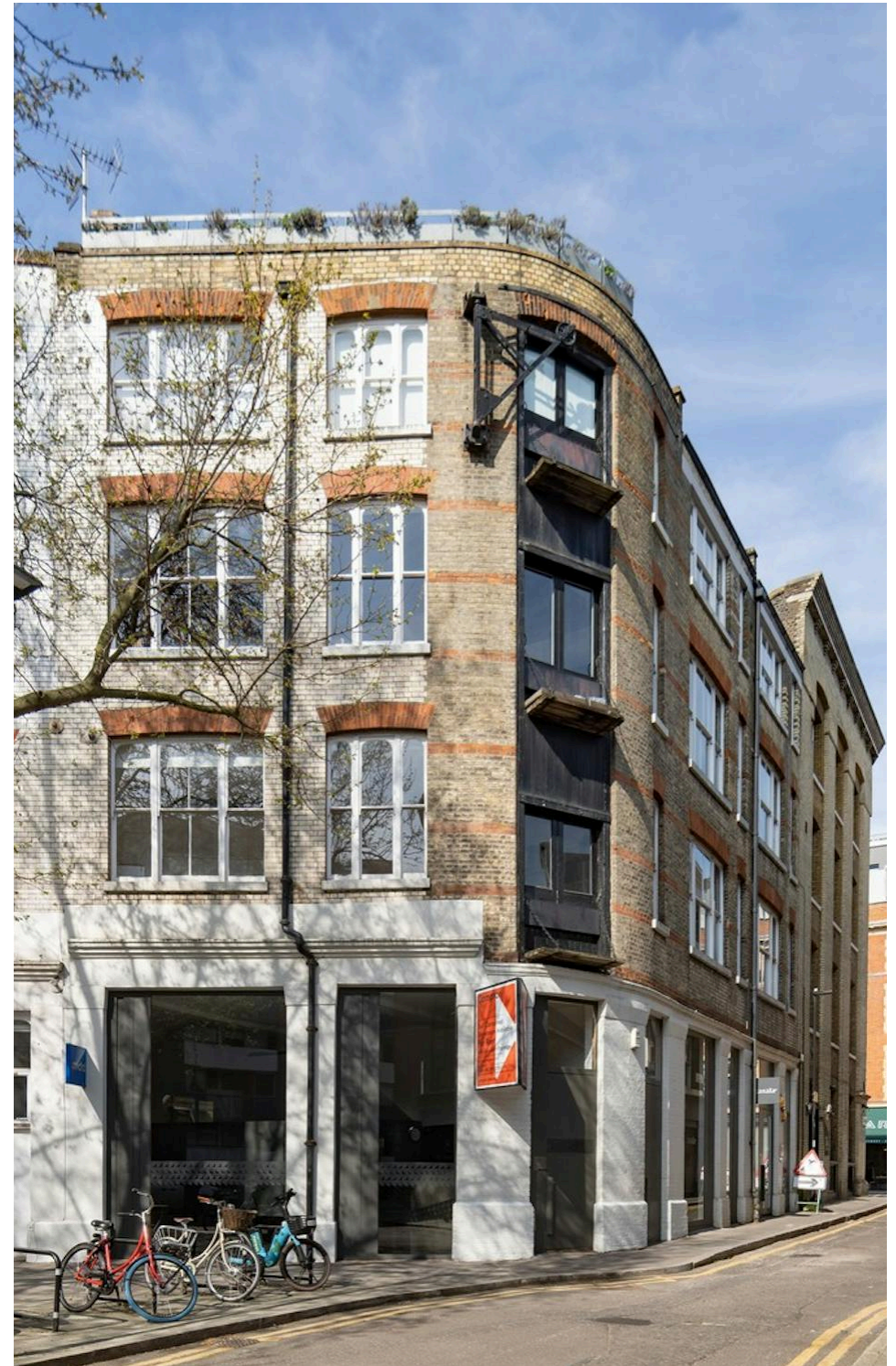
Not Fitted

Description

Presenting a unique, fully self-contained ground and lower-ground showroom on 5 Crescent Row, designed in an open-plan layout. This space features a striking floating ground floor and steel staircase, complemented by contemporary finishes throughout. Generous double-height ceilings allow ample natural light to flow into both floors, creating an inviting and versatile environment.

Equipped with a modern kitchen and WCs, this showroom is an ideal choice for brands seeking a functional, stylish space.

Compton



For Rent

5 Crescent Row
Clerkenwell EC1Y

Interior

Size

846 Ft²

Rent

£55 per sq ft

Fitout

Not Fitted



Compton

For Rent

5 Crescent Row
Clerkenwell EC1Y

Entrance

Compton

5 — 14



For Rent

5 Crescent Row
Clerkenwell EC1Y

Interior



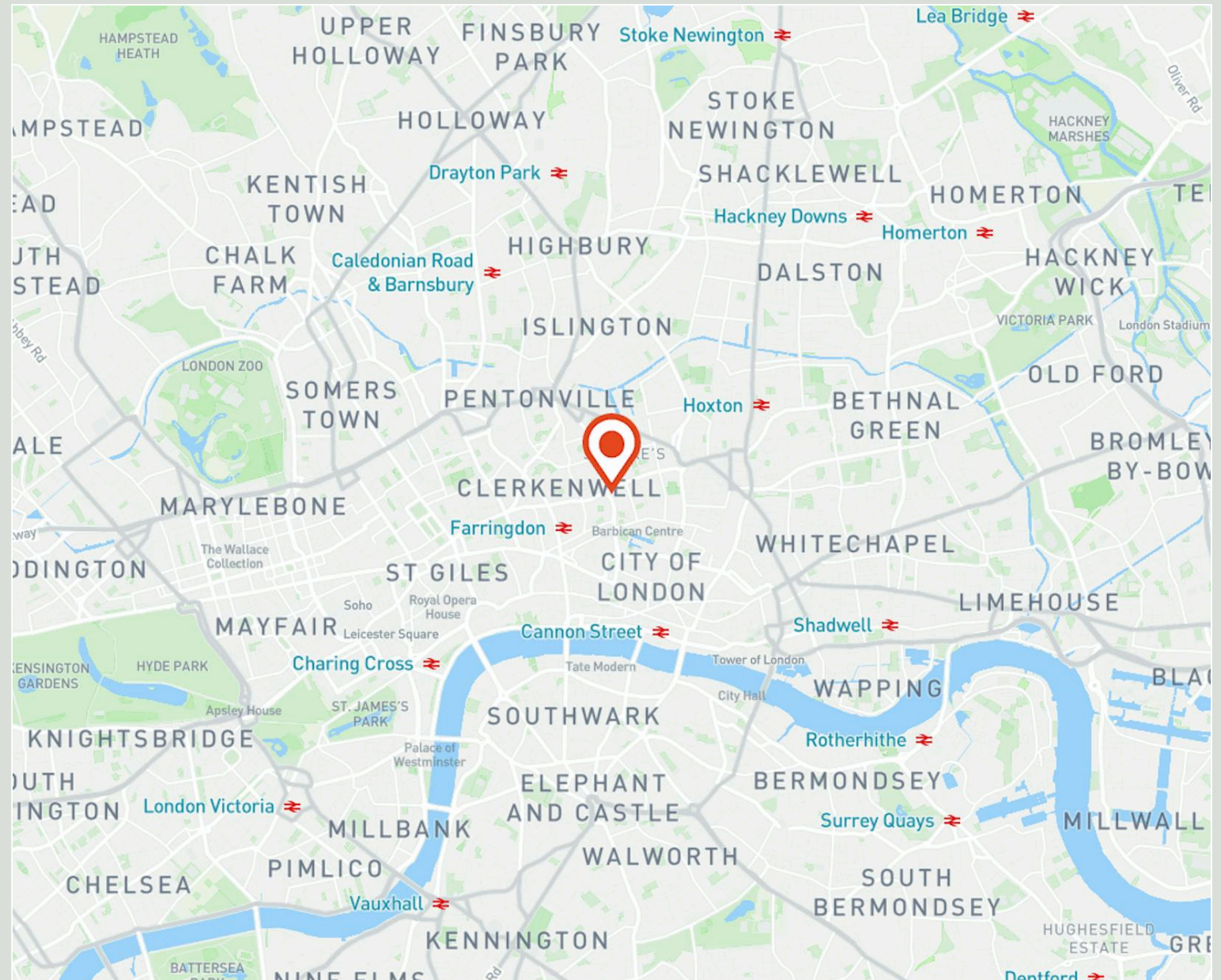
Showroom Exterior

For Rent

5 Crescent Row
Clerkenwell EC1Y

Location

Located on Crescent Road, the property is positioned behind the cross junction of Goswell Road and Clerkenwell Road, within the bustling Clerkenwell neighbourhood. It benefits from the fantastic array of local amenities, including independent coffee shops, traditional British pubs and celebrated restaurants. The area is a popular choice for tech start-ups, HQ bases and creative companies and benefits from good local transport links with Barbican (4 mins walk), Old Street (7 mins walk) and Farringdon (9 mins walk) in close proximity. Connectivity has been further improved by the arrival of Crossrail at Farringdon/Barbican Stations.



For Rent

5 Crescent Row
Clerkenwell EC1Y

Interior



Compton

8 — 14

For Rent

5 Crescent Row
Clerkenwell EC1Y

Amenities

- Generous Window Frontage
- Double Height Ceilings throughout both floors
- CAT A/ Open Plan
- Fully Self Contained
- Modern lighting throughout
- Feature Staircase with Steel Finishes
- Demised WC's and Kitchenette

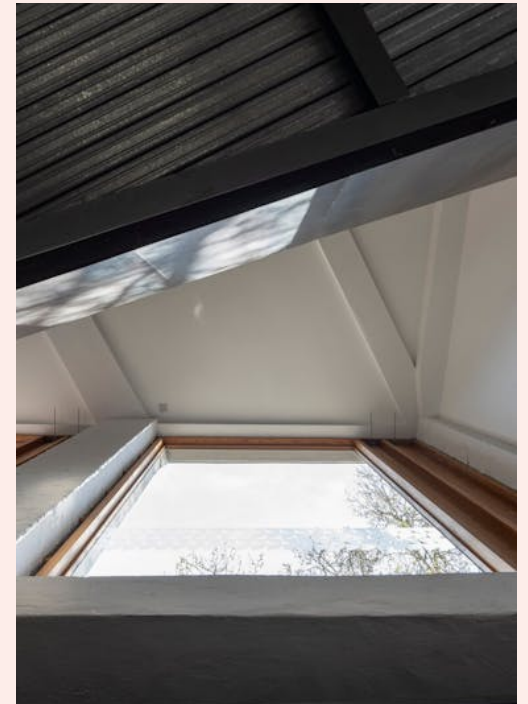
Compton



For Rent

5 Crescent Row
Clerkenwell EC1Y

Interior



Interior

For Rent

5 Crescent Row
Clerkenwell EC1Y

Availability

Name	Sq Ft	Rent (Sq Ft)	Rates Payable (Sq Ft)	Service Charge (Sq Ft)	Total /Sq Ft	Total Month	Total Year	Availability
Unit - Ground & Lower Ground	846	£55	£8.57	£2.40	£65.97	£4,650.89	£55,810.62	Under Offer
Total	846	£55	£8.57	£2.40	£65.97	£4,650.89	£55,810.62	

For Rent

5 Crescent Row
Clerkenwell EC1Y

Tenure

New Lease

Availability

Available Immediately

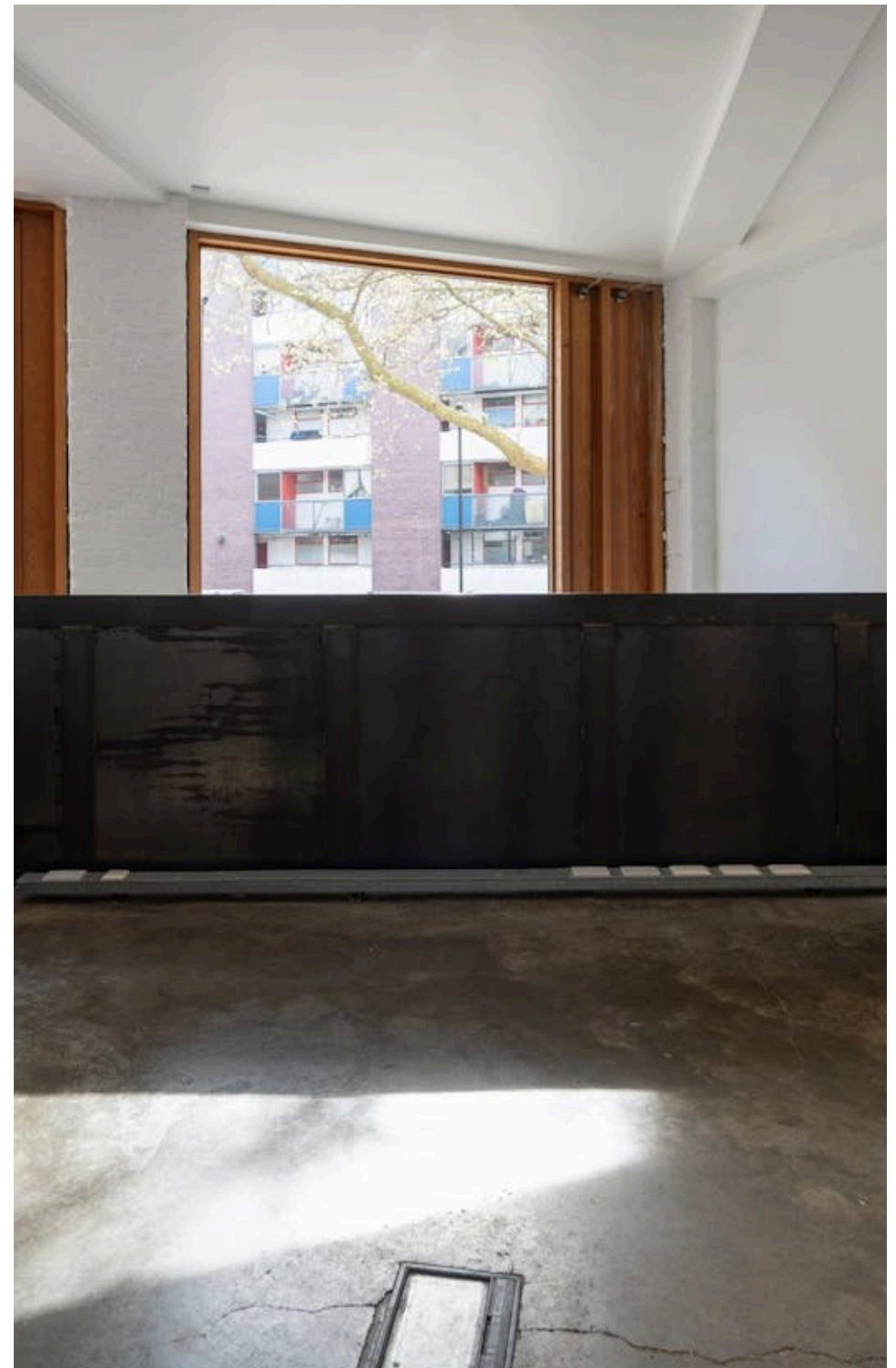
Compton Concierge

Want your workspace *managed*?

Find out more

compton.london/concierge

Compton



Contact Us

compton.london

020 7101 2020

enquiries@compton.london

All appointments to view must be arranged via sole agents, Compton, through:



Sonia Oberoi

so@compton.london

+44 (0) 20 7101 2020 | +44
(0) 7483 882 598



Andy Gilbert

ag@compton.london

020 7101 2020 | 07833993714