

Crucible Homes



Chapel Street
Rotherham, S63 0QP

Asking Price Of
£120,000

Overview

NO CHAIN

Spacious and light rooms

Beautiful kitchen and bathroom

Ample on street parking

Great location

Rear enclosed garden



Description

SUMMARY DESCRIPTION Presenting an exquisitely finished and exceptionally spacious two-bedroom mid-terraced home located in the sought-after area of Thurnscoe, Barnsley.

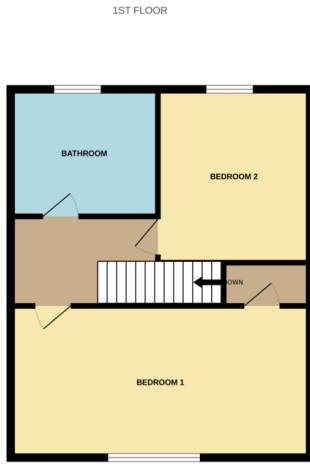
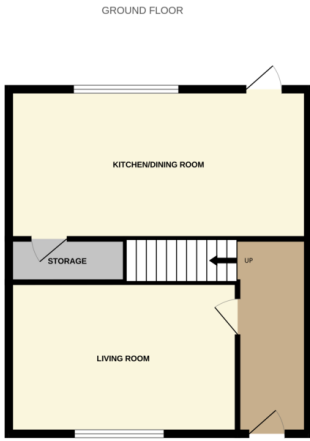
This property is ideally positioned for convenient commuting to Barnsley, Sheffield, and Rotherham, with the M1 motorway just a five-minute drive away. It is also in close proximity to an array of shops and local amenities, adding to its appeal for a wide range of buyers.

The accommodation briefly comprises a welcoming entrance hallway, a comfortable living room, and a generously sized kitchen/diner. Moving to the first floor, you'll find two well-proportioned bedrooms and a modern family bathroom, complete with a three-piece white suite and contemporary wall tiling. To the rear of the property, there is an enclosed, low-maintenance yard, ideal for relaxation or entertaining.

This charming home is perfectly suited to a variety of buyers, including first-time purchasers and investors, and it's unlikely to remain on the market for long.

****Contact our office today to arrange a viewing and discover all this property has to offer!****





TOTAL FLOOR AREA: 853sq.ft. (82.0 sq.m.) approx.
 Whilst every attempt has been made to ensure the accuracy of the floorplan contained here, measurements of doors, windows, rooms and any other items are approximate and no responsibility is taken for any error, omission or mis-statement. This plan is for illustrative purposes only and should be used as such by any prospective purchaser. The services, systems and appliances shown have not been tested and no guarantee as to their operability or efficiency can be given.
 Made with Metropac C2024.

Score	Energy rating	Current	Potential
92+	A		
81-91	B		89 B
69-80	C	70 C	
55-68	D		
39-54	E		
21-38	F		
1-20	G		

