

**TO LET**



## **Seaweed Close, Weston**

**2 Bedrooms, 1 Bathroom, Ground Floor Apartment**

**£1,100 pcm**



## Seaweed Close, Weston

Ground Floor Apartment,  
2 bedroom, 1 bathroom

£1,100 pcm

Date available: Available Now

Deposit: £1,269.23

Unfurnished

Council Tax band: A

- Gas Central Heating
- Double Glazing
- Allocated parking
- Modern
- 
- White goods included
- Rent £1100pcm

Martin and Co are delighted to present to the market this modern two bedroom apartment, situated in a quiet cul-de-sac.

The apartment, comprises of the following;

Double master bedroom with en suite.

Large single bedroom

Ideal family sized bathroom, with shower over bath, W.C and Wash Basin.

Modern Kitchen

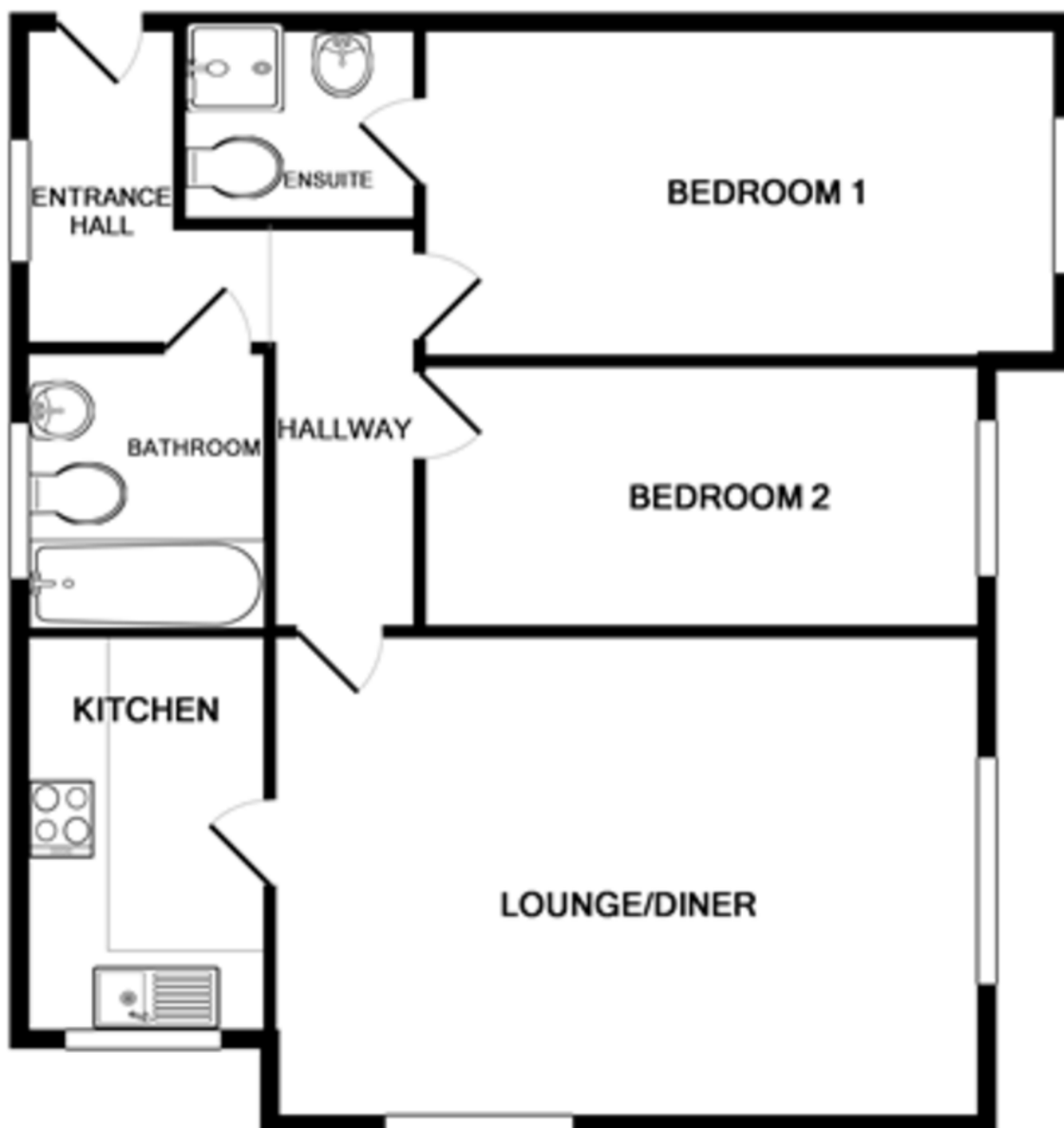
Spacious Lounge/Diner

Further benefits include; allocated parking, gas central heating and double glazing.

### Energy Efficiency Rating

	Current	Potential
<i>Very energy efficient - lower running costs</i>		
(92+) <b>A</b>		
(81-91) <b>B</b>		
(69-80) <b>C</b>	81	81
(55-68) <b>D</b>		
(39-54) <b>E</b>		
(21-38) <b>F</b>		





Whilst every attempt has been made to ensure the accuracy of the floor plan contained here, measurements of doors, windows, rooms and any other items are approximate and no responsibility is taken for any error, omission, or mis-statement. This plan is for illustrative purposes only and should be used as such by any prospective purchaser. The services, systems and appliances shown have not been tested and no guarantee as to their operability or efficiency can be given  
 Made with Metropix ©2015

**Martin & Co Southampton City** **02380 988881**  
 46 London Road • Southampton • SO15 2AH  
 T: 02380 988881 • E: southamptoncity@martinco.com <http://www.martinco.com>



**Accuracy:** References to the Tenure of a Property are based on information supplied by the Seller. The Agent has not had sight of the title documents. A Buyer is advised to obtain verification from their Solicitor. Items shown in photographs including but not limited to carpets, fixtures and fittings are not included unless specifically mentioned within the sales particulars. They may however be available by separate negotiation. Buyers must check the availability of any property and make an appointment to view before embarking on any journey to see a property. No person in the employment of the agent has any authority to make any representation about the property, and accordingly any information given is entirely without responsibility on the part of the agents, sellers(s) or lessors(s). Any property particulars are not an offer or contract, nor for part of one. **Sonic / Laser Tape:** Measurements taken using a sonic / Laser tape measure may be subject to a small margin of error. **All Measurements:** All Measurements are Approximate. **Services Not tested:** The Agent has not tested any apparatus, equipment, fixtures and fittings or services and so cannot verify that they are in working order or fit for the purpose. A Buyer is advised to obtain verification from their Solicitor or Surveyor.