



**Raleigh, Clements Way**

Shrivenham

**£580,000**



## Raleigh, Clements Way

Shrivenham

This stunning 5-bedroom detached house presents an opportunity for those seeking a new home that effortlessly combines space, style, and sophistication. Boasting a contemporary design and high-end finishes throughout, this new home comes with the added bonus of having the stamp duty paid, a considerable saving of £16,500. Upon entering, you are greeted by a spacious and light-filled family/kitchen/dining room, perfect for both entertaining guests and every-day family living. The property also features a convenient utility room and WC on the ground floor, catering to modern day-to-day needs.

Upstairs, the accommodation comprises five generously sized bedrooms, with the master bedroom and bedroom 2 benefitting from en-suite facilities, along with a well-appointed family bathroom. Further enhancing the appeal of this property, there is a single garage and driveway parking providing ample space for multiple vehicles. Adding to the allure of this exceptional home is the south-facing garden.

- NEW HOME
- STAMP DUTY PAID (WORTH £16,500)
- DETACHED
- LARGE FAMILY / KITCHEN / DINING ROOM
- UTILITY ROOM AND WC
- FIVE BEDROOMS
- MASTER AND BEDROOM 2 EN-SUITES AND FAMILY BATHROOM
- SINGLE GARAGE AND DRIVEWAY PARKING
- SOUTH FACING GARDEN



**Entrance Hall**

**Lounge**

16' 11" x 12' 6" (5.15m x 3.80m)

**Family / Kitchen / Dining**

29' 9" x 13' 0" (9.06m x 3.95m)

**Study**

9' 9" x 7' 5" (2.96m x 2.26m)

**Utility**

6' 4" x 6' 4" (1.92m x 1.92m)

**WC**

**Landing**

**Bedroom 1**

10' 5" x 11' 11" (3.17m x 3.64m)

**En-suite**

**Bedroom 2**

13' 2" x 9' 11" (4.01m x 3.02m)

**En-suite**

**Bedroom 3**

9' 9" x 13' 0" (2.98m x 3.97m)

**Bedroom 4**

10' 3" x 9' 2" (3.13m x 2.80m)

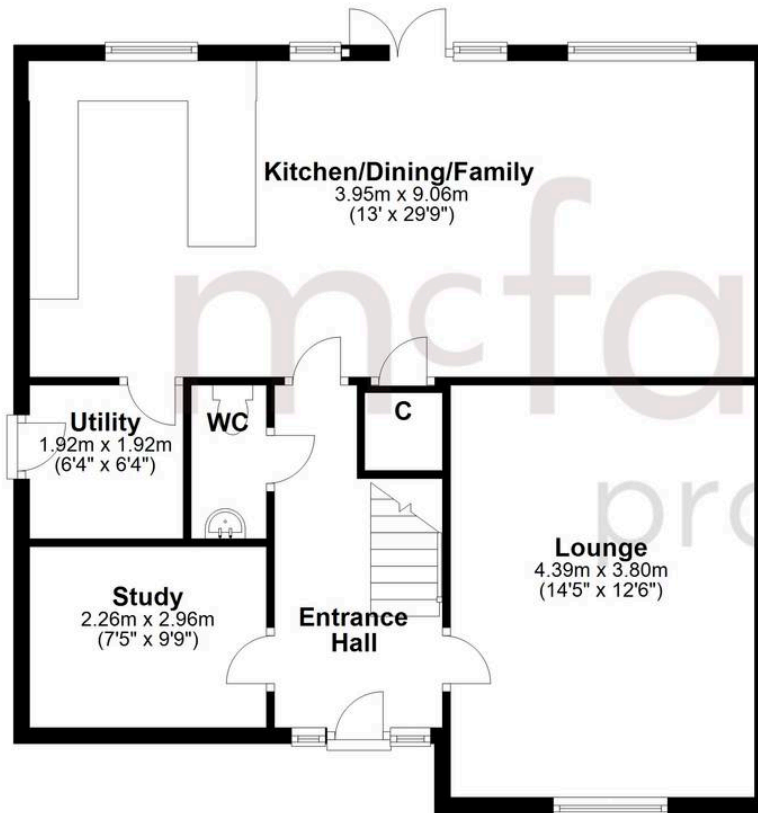
**Bathroom**

**Bedroom 5**

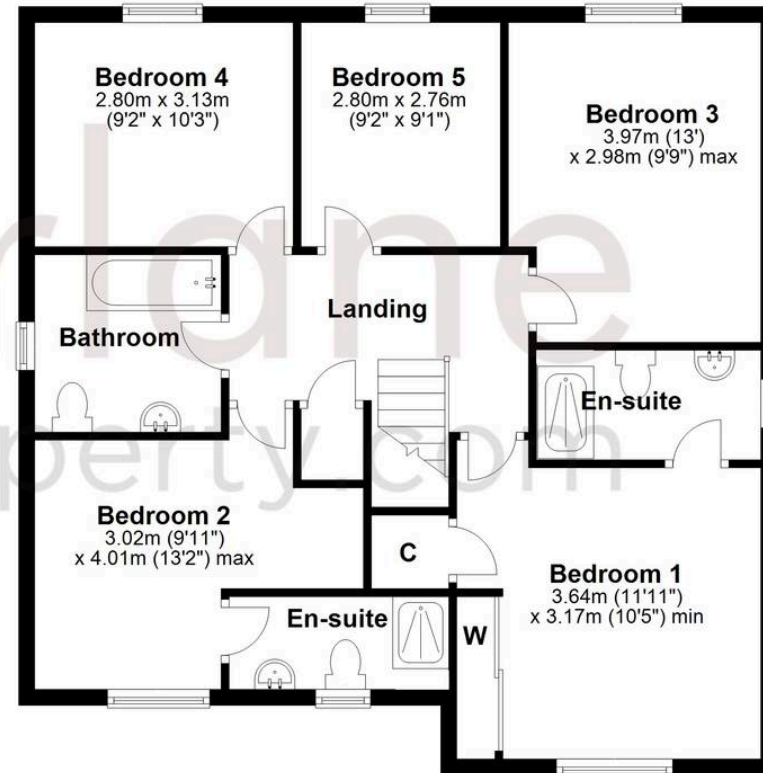
9' 1" x 9' 2" (2.76m x 2.80m)



## Ground Floor



## First Floor



# McFarlane Sales & Lettings

McFarlane Sales & Letting, 106 High Street - SN8 1LT

01672 514380 • [marlborough@mcfarlaneproperty.com](mailto:marlborough@mcfarlaneproperty.com) • [www.mcfarlaneproperty.com/](http://www.mcfarlaneproperty.com/)