



**CPH** ESTATE AGENTS &  
CHARTERED SURVEYORS  
*For over 30 years*

5 Coverdale Drive, Scarborough  
£250,000





## 5 Coverdale Drive

Scarborough, Scarborough

- POPULAR LOCATION NEARBY TO SCARBOROUGH HOSPITAL
- OFF-STREET PARKING AND GARAGE
- LAWNED GARDENS TO THE FRONT AND REAR
- LIGHT AND AIRY CONSERVATORY PLUS STUDY/SNUG ROOM
- OFFERED TO THE MARKET WITH NO ONWARD CHAIN
- TWO/THREE BEDROOM DETACHED BUNGALOW

NEW to the market is this IMPOSING, TWO/THREE BEDROOM DETACHED BUNGALOW which is well located within the enviable NORTH SIDE of Scarborough in close proximity to SCARBOROUGH HOSPITAL. This property is offered to the market with NO ONWARD CHAIN, with the additional benefit of a CONSERVATORY, STUDY/SNUG/THIRD BEDROOM, LAWNED GARDENS, OFF-STREET PARKING and GARAGE.

The accommodation is well laid out and briefly comprises; entrance hallway with built-in storage, spacious lounge/diner with an electric fire, a door into a kitchen which is fitted with a range of matching wall/base units and double doors into a light and airy conservatory. From the conservatory lies further double doors out to the rear gardens. Also to the ground floor lies a study/snug room which could also be utilised as a third bedroom should one wish, two double bedrooms (with fitted wardrobes to the master) and a three-piece suite shower room. Externally, to the front and rear of the property lies well-maintained, lawned gardens. The property also has the additional benefit of a garage with an off-street parking space in front.







## ACCOMMODATION

### GROUND FLOOR

#### Entrance Hall

Dimensions: 3.2m max x 3.1m max (10'5" max x 10'2" max).

#### Lounge/Diner

Dimensions: 6.5m max x 4.2m max (21'3" max x 13'9" max).

#### Kitchen

Dimensions: 3.3m x 2.9m plus 1.7m x 1.5m (10'9" x 9'6" plus 5').

#### Snug/Study/Bedroom Three

Dimensions: 3.0m x 2.5m (9'10" x 8'2").

#### Conservatory

Dimensions: 4.3m max x 2.7m max (14'1" max x 8'10" max).

#### Bedroom One

Dimensions: 4.7m max into wardrobes x 2.6m (15'5" max into war.

#### Bedroom Two

Dimensions: 3.8m x 2.8m (12'5" x 9'2").

#### Shower Room

Dimensions: 2.9m max x 1.7m (9'6" max x 5'6").

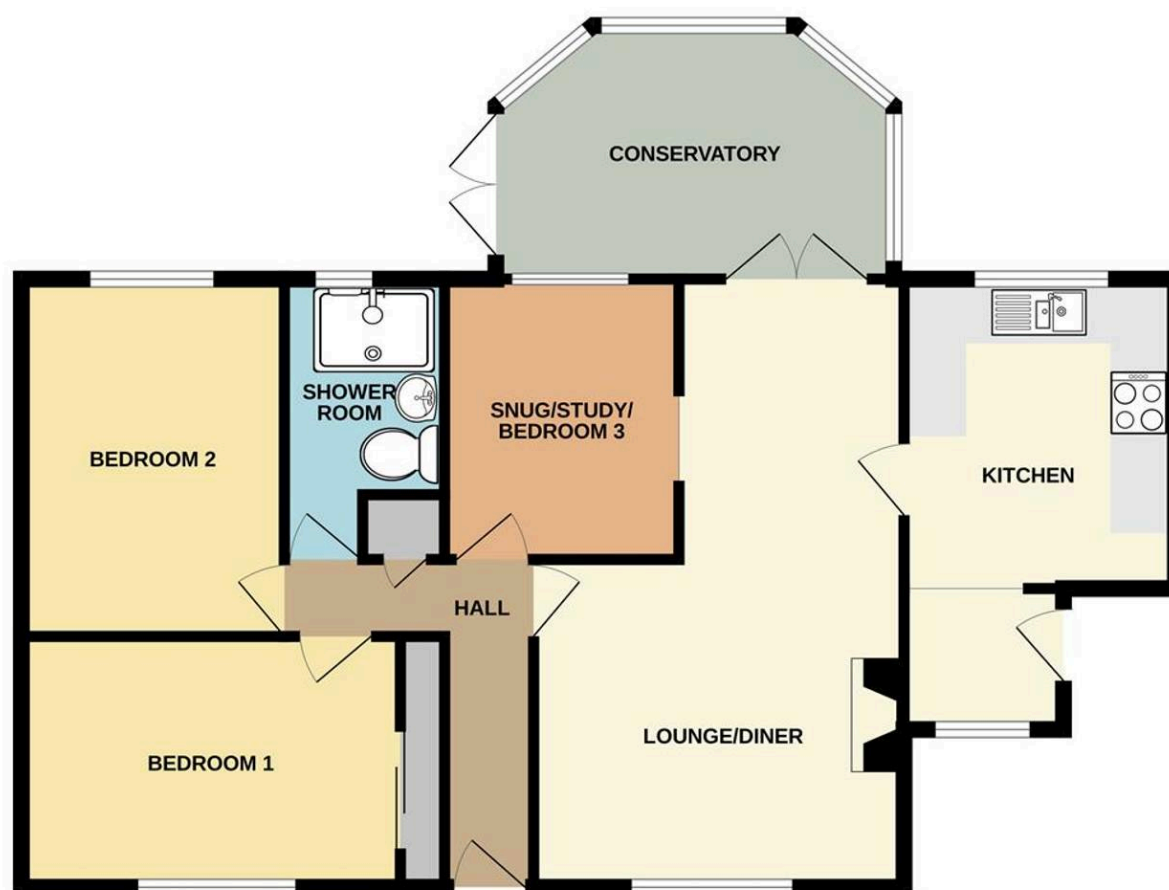
#### Details Prepared/Ref

TLPF/141024





# GROUND FLOOR 897 sq.ft. (83.4 sq.m.) approx.



TOTAL FLOOR AREA : 897 sq.ft. (83.4 sq.m.) approx.

Whilst every attempt has been made to ensure the accuracy of the floorplan contained here, measurements of doors, windows, rooms and any other items are approximate and no responsibility is taken for any error, omission or mis-statement. This plan is for illustrative purposes only and should be used as such by any prospective purchaser. The services, systems and appliances shown have not been tested and no guarantee as to their operability or efficiency can be given.  
Made with Metropix ©2024

## Interested?

Contact our friendly team today  
☎ 01723 352235 | ✉ sales@cphproperty.co.uk

With you every step of the way



## Sales, Lettings & Commercial

ESTATE AGENTS & CHARTERED SURVEYORS  
19 St. Thomas Street, Scarborough YO11 1DY



rightmove Zoopla.co.uk PrimeLocation.com

NOTE: These particulars are intended only as a guide to prospective Purchasers to enable them to decide whether to make further enquiries with a view to taking up negotiations but they are otherwise not intended to be relied upon in any way for any purpose whatsoever and accordingly neither their accuracy nor the continued availability of the property is in any way guaranteed and they are furnished on the express understanding that neither the Agents nor the Vendors are to be or become under any liability or claim in respect of their contents. Any prospective Purchaser must satisfy himself by inspection or otherwise as to the correctness of the particulars contained. C132