



Hampson Close, Eccles

Manchester



£190,000

Hampson Close

Eccles, Manchester

****Deceptively Spacious, Extended, Two Bedroom End Terraced Property Available with NO VENDOR CHAIN - Featuring a Large Four-Piece Bathroom, a Contemporary Fitted Kitchen and Off-Road Parking****

Council Tax band: A

Tenure: Freehold

- Available with NO VENDOR CHAIN!
- Deceptively Spacious, Extended, Two Bedroom End Terraced Property
- Spacious Lounge and a Light-Filled Dining Room
- Contemporary Fitted Kitchen and a Spacious, Four-Piece Bathroom
- Downstairs W/C
- Two Well-Proportioned Bedrooms, with the Main Bedroom Benefitting from a Dressing Room
- Gated Off-Road Parking to the Rear
- Boasts a Generous Plot, with Low-Maintenance Gardens to the Side and Rear
- Great First Time Home or Investment
- Viewing is Highly Recommended!



HILLS



Entrance Hallway

Entered via a uPVC front door. Complete with a ceiling light point.

Kitchen

18' 9" x 8' 2" (5.71m x 2.49m)

Featuring complementary units with integral stainless steel sink, gas and hob. Complete with ceiling spotlights, two double glazed windows, tiled walls and laminate flooring.

Lounge

14' 2" x 14' 7" (4.31m x 4.44m)

Complete with a ceiling light point, wall mounted radiator and laminate flooring.

Dining Room

10' 7" x 8' 9" (3.22m x 2.66m)

Complete with a ceiling light point, double glazed window, wall mounted radiator and patio doors. Fitted with laminate flooring.

W.C.

5' 6" x 2' 5" (1.68m x 0.74m)

Featuring a hand wash basin and W.C. Complete with a ceiling light point, double glazed window and tiled flooring.

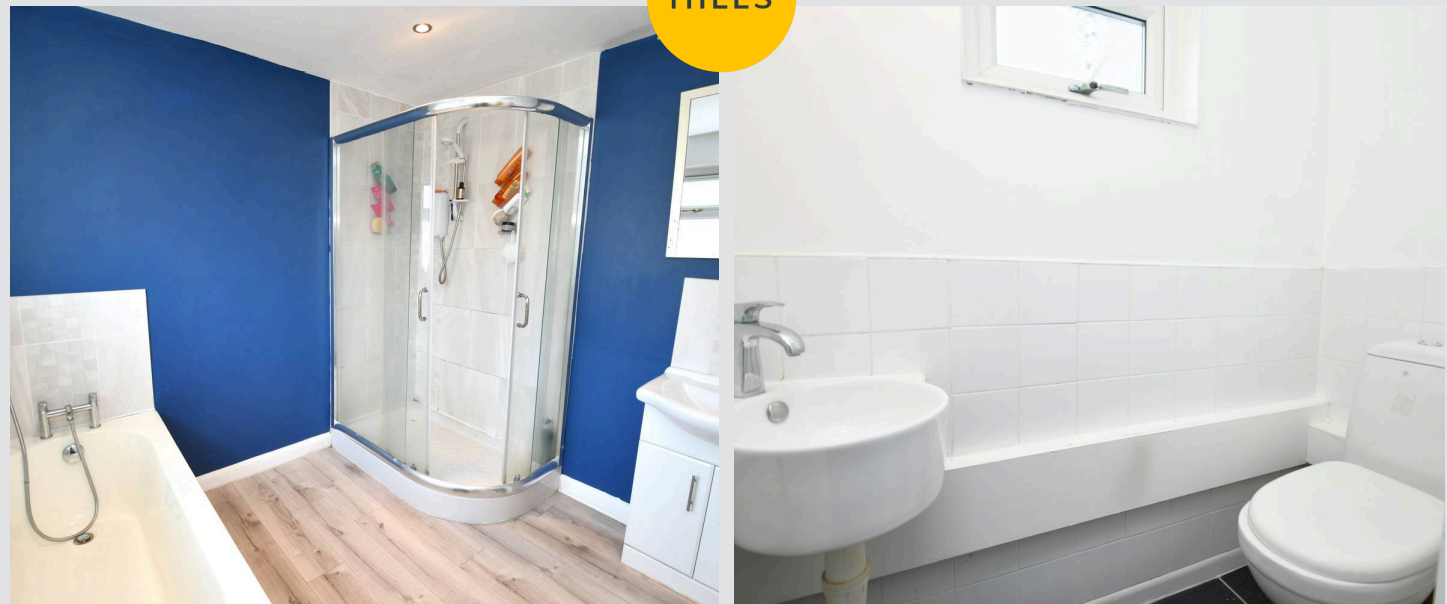
Landing

Complete with a ceiling light point, double glazed window and storage cupboards.

Bedroom One

11' 9" x 11' 2" (3.58m x 3.40m)

Featuring fitted wardrobes. Complete with a ceiling light point, double glazed window and wall mounted radiator. Fitted with carpet flooring.



Dressing Room

11' 7" x 4' 9" (3.53m x 1.45m)

Complete with ceiling spotlights, double glazed window and wall mounted radiator. Fitted with carpet flooring.

Bedroom Two

11' 8" x 5' 5" (3.55m x 1.65m)

Complete with a ceiling light point, double glazed window and wall mounted radiator. Fitted with carpet flooring. Loft access.

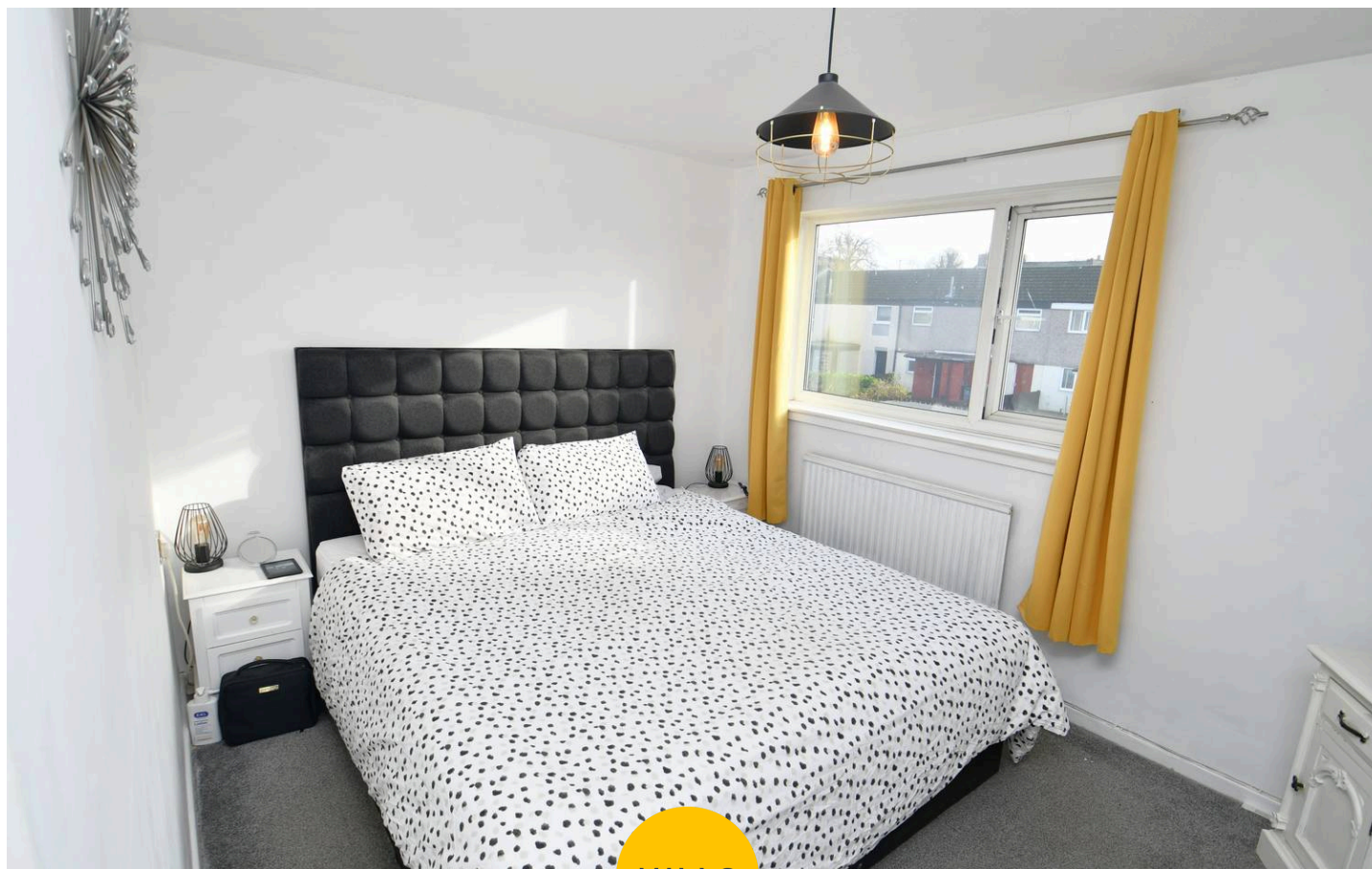
Bathroom

8' 3" x 8' 3" (2.51m x 2.51m)

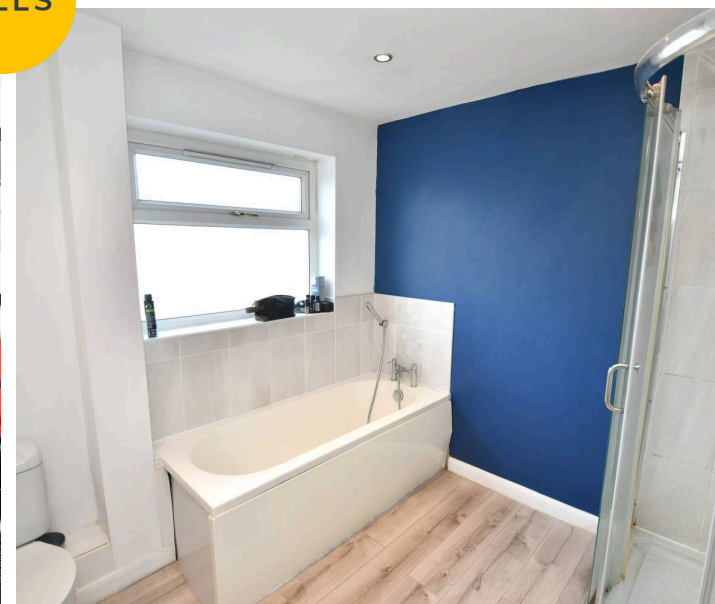
Featuring a four piece suite including a bath, shower, hand wash basin and W.C. Complete with ceiling spotlights, double glazed window and heated towel rail. Fitted with laminate flooring.

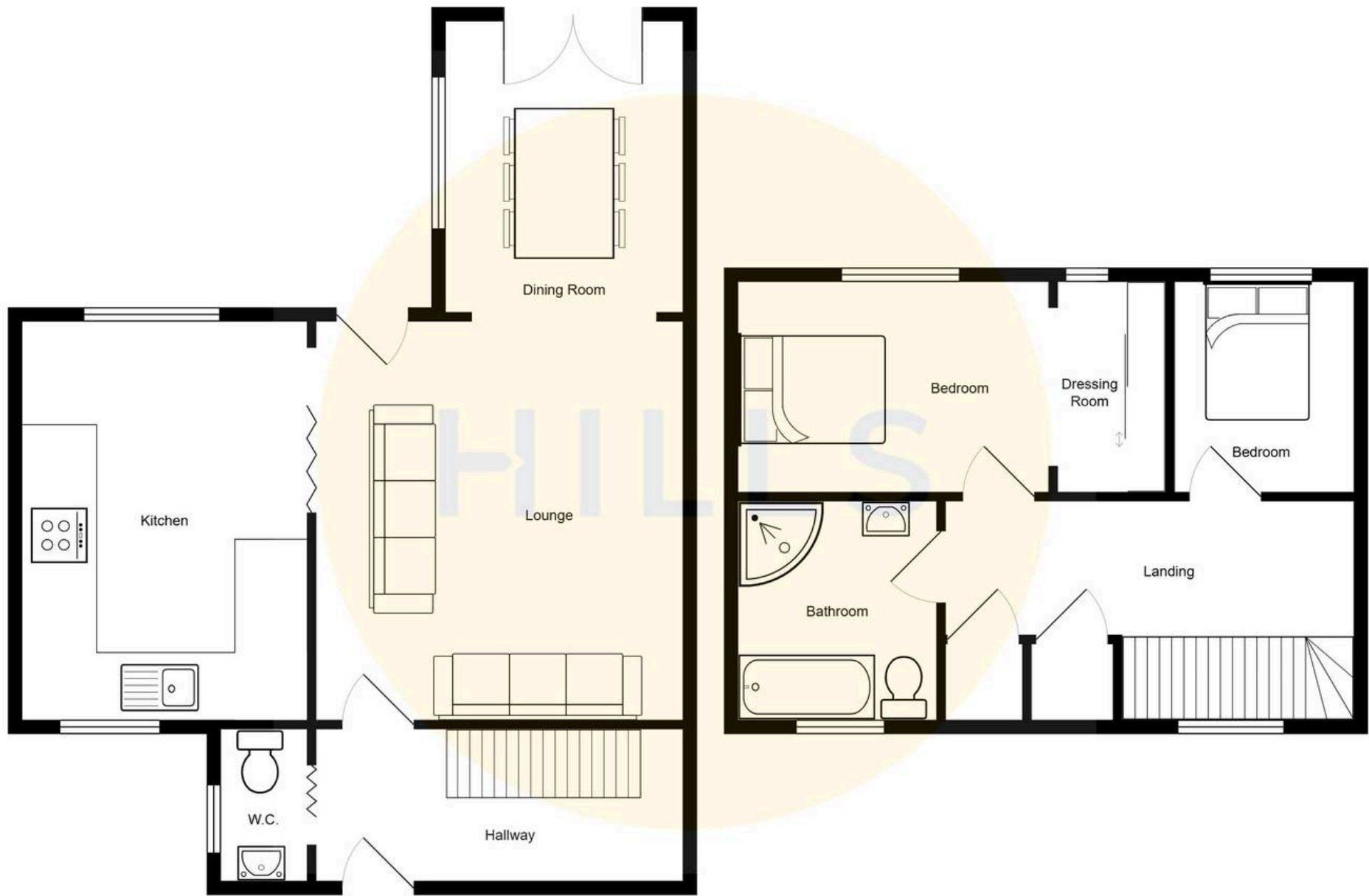
External

To the side and rear of the property is a low maintenance garden and gated off road parking.



HILLS







Hills | Salfords Estate Agent

Hills Residential, Sentinel House Albert Street - M30 0SS

0161 707 4900

sales@hills.agency

www.hills.agency/



THE PROPERTY MISDESCRIPTIONS ACT 1991 The Agent has not tested any apparatus, equipment, fixtures and fittings or services and so cannot verify that they are in working order or fit for the purpose. A Buyer is advised to obtain verification from their Solicitor or Surveyor. References to the Tenure of a Property are based on information supplied by the Seller. The Agent has not had sight of the title documents. A Buyer is advised to obtain verification from their Solicitor. You are advised to check the availability of this property before travelling any distance to view. Every effort and precaution has been made to ensure these particulars are correct and not misleading but their accuracy is not guaranteed nor do they form part of any contract. If there is any point which is of particular importance to you, please contact us and we will provide any information you require. This is advisable, particularly if you intend to travel some distance to view the property. The mention of any appliances and services within these details does not imply that they are in full and efficient working order. These particulars are in draft form awaiting Vendors confirmation of their accuracy. These details must therefore be taken as a guide only.