



25 Ash Drive, Martham

£57,500 Leasehold

SHARED OWNERSHIP. Introducing this well-presented two-bedroom semi-detached bungalow, perfectly positioned in a sought-after area of Martham near local amenities.

Council Tax band: B

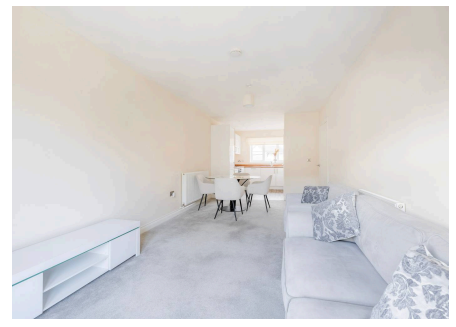
Tenure: Leasehold

Introducing this well-presented two-bedroom semi-detached shared ownership bungalow, perfectly positioned in a sought-after area of Martham near local amenities. Featuring an inviting open-plan lounge, kitchen, and dining area, this home is designed for modern living. With an enclosed rear garden and off-road parking for added convenience, this property combines comfort and practicality. An excellent opportunity to make this bungalow your next home.

Location

Located on Ash Drive in the peaceful village of Martham this property offers a serene setting with easy access to essential amenities. Martham provides a range of local shops, a post office, and cosy pubs, making daily needs conveniently close. The village is surrounded by picturesque countryside and is just a short drive from the Norfolk Broads, a renowned area for boating, walking, and nature. With schools nearby and coastal towns within reach, Ash Drive is well-suited for those seeking a balanced lifestyle in a welcoming community.

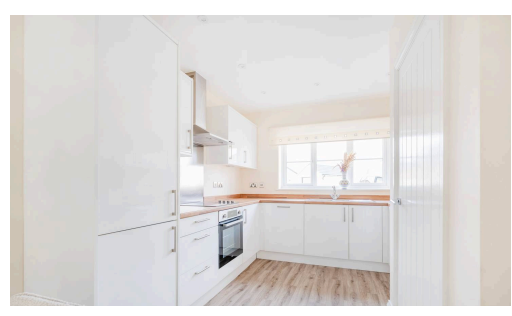
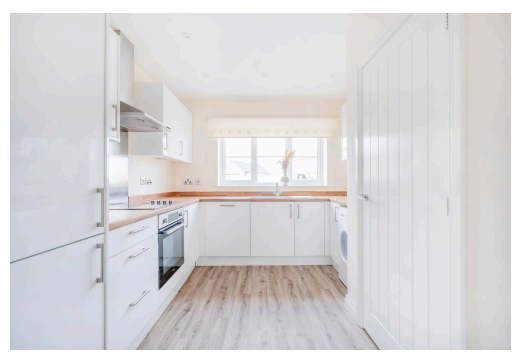
Ash Drive Martham



Introducing this well-presented two-bedroom semi-detached shared ownership bungalow, perfectly positioned in a sought-after area of Martham near local amenities. Featuring an inviting open-plan lounge, kitchen, and dining area, this home is designed for modern living. With an enclosed rear garden and off-road parking for added convenience, this property combines comfort and practicality. An excellent opportunity to make this bungalow your next home.

Location

Located on Ash Drive in the peaceful village of Martham this property offers



Introducing this well-presented two-bedroom semi-detached shared ownership bungalow, perfectly positioned in a sought-after area of Martham near local amenities. Featuring an inviting open-plan lounge, kitchen, and dining area, this home is designed for modern living. With an enclosed rear garden and off-road parking for added convenience, this property combines comfort and practicality. An excellent opportunity to make this bungalow your next home.

Location

Located on Ash Drive in the peaceful village of Martham this property offers a serene setting with easy access to essential amenities. Martham provides a range of local shops, a post office, and cosy pubs, making daily needs conveniently close. The village is surrounded by picturesque countryside and is just a short drive from the Norfolk Broads, a renowned area for boating, walking, and nature. With schools nearby and coastal towns within reach, Ash Drive is well-suited for those seeking a balanced lifestyle in a welcoming community.

Ash Drive, Martham

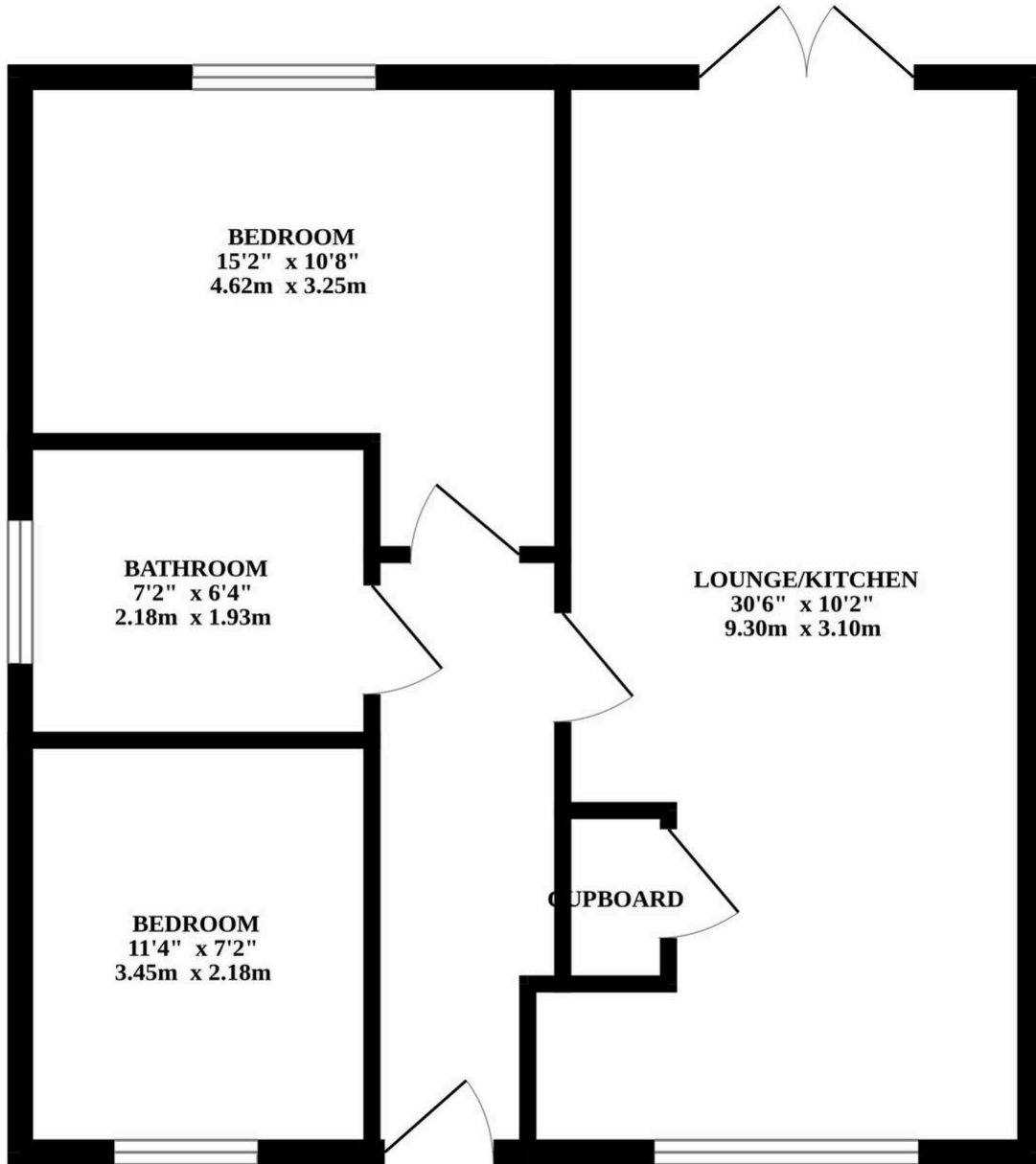
Upon entering the property, you are greeted by an inviting entrance hallway adorned with plush carpet floors, setting the tone for the elegance that awaits inside. The open-plan lounge/diner/kitchen area boasts a seamless flow, perfect for modern living. The lounge and diner area feature carpet flooring, a front-facing window allowing natural light to flood the space, and ample room for dining furniture, ideal for entertaining guests or relaxing. The well-equipped, modern kitchen offers sleek white built-in cabinets and stylish wood-effect flooring, creating a clean and contemporary feel. It includes integrated appliances and convenient under-counter space for a washing machine. With its practical layout, this kitchen ensures a smooth and enjoyable meal preparation experience.

The bungalow comprises one double bedroom and one single bedroom, each offering comfortable accommodation for residents and guests. The double bedroom is complete with carpet flooring and a free-standing wardrobe for all your storage needs. The single bedroom offers a flexible area that can be adapted to suit your needs, whether as a cosy guest room, a dedicated home office, or a creative space. The centrally located family bathroom showcases contemporary style, featuring a towel rail, a bathtub with an overhead shower, and a half-glass panel that adds a touch of sophistication. Its layout is suitable for all household needs, offering both functionality and comfort. Finished to a high standard throughout, this property exudes quality and attention to detail.

The rear enclosed garden provides a private space ideal for enjoying outdoor activities. Mainly laid to lawn, this well-maintained



GROUND FLOOR



Whilst every attempt has been made to ensure the accuracy of the floorplan contained here, measurements of doors, windows, rooms and any other items are approximate and no responsibility is taken for any error, omission or mis-statement. This plan is for illustrative purposes only and should be used as such by any prospective purchaser. The services, systems and appliances shown have not been tested and no guarantee as to their operability or efficiency can be given.
Made with Metroptix ©2024

You can include any text here. The text can be modified upon generating your brochure.

You can include any text here. The text can be modified upon generating your brochure.

