



Terraced Town Cottage

CHECK THIS OUT! A beautifully presented Town House Cottage located in the heart of Teignmouth. Living & Dining Room, modern Kitchen, 2 Double Bedrooms & Bathroom. Double Glazing, Gas Central Heating, Patio Garden & Utility store. NO ONWARD CHAIN. Close to Beach & all local Town Shops

10 Teign Street | Teignmouth | TQ14 8EA





PROPERTY TYPE

Terraced House



SIZE

718 sq ft



LOCATION

Town



AGE

Victorian (1837 - 1901)



BEDROOMS

2



RECEPTION ROOMS

2



BATHROOMS

1



WARMTH

Gas Central Heating



PARKING

Permit Parking



OUTSIDE SPACE

Patio



EPC RATING

45E



COUNCIL TAX BAND

A



in a nutshell...

- 2 Double Bedrooms
- Living Room & Dining Room
- Modern Fitted Kitchen
- Modern Bathroom
- All local Shops & Amenities
- Patio Garden Area
- Utility Store
- Town Centre Location
- No Onward Chain





the details...

This charming character cottage is nestled in the heart of the town centre, with a variety of shops on your doorstep and convenient access to the Quay, beachfront, and transport route.

This home has been tastefully modernised internally while retaining its character.

A glazed door opens into the entrance hall, which includes stairs to the first floor and doors to the lounge and dining room. The lounge has a lovely feature fireplace and a double glazed window that overlooks the square. The dining room is lovely and bright, with an additional feature fireplace.

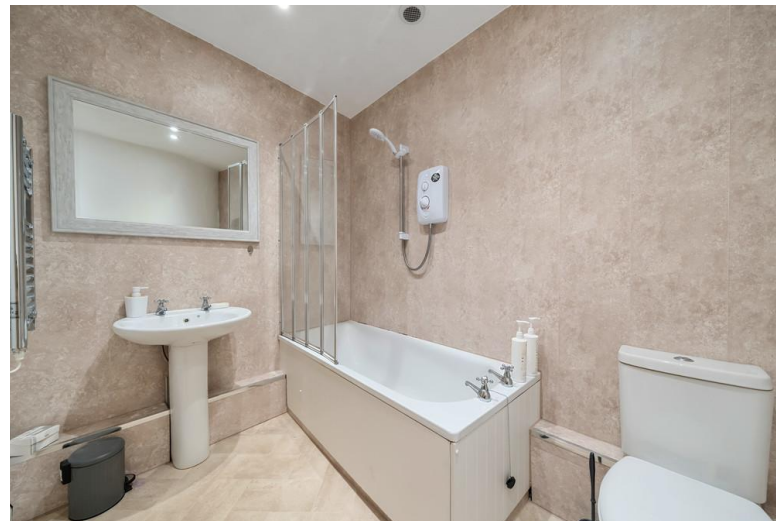
This has a patio door and is open to the modern kitchen. The kitchen is outfitted with high-quality units, including an oven, hob, and hood.

The first-floor landing has double-glazed windows that allow for natural lighting. There are two double bedrooms and a modern white bathroom with a bathtub and a shower overhead.

There is a small but attractive enclosed courtyard just off the dining room. A useful utility store with space for a washing machine can be found at the rear of the courtyard.

Tenure: Freehold

Council Tax Band





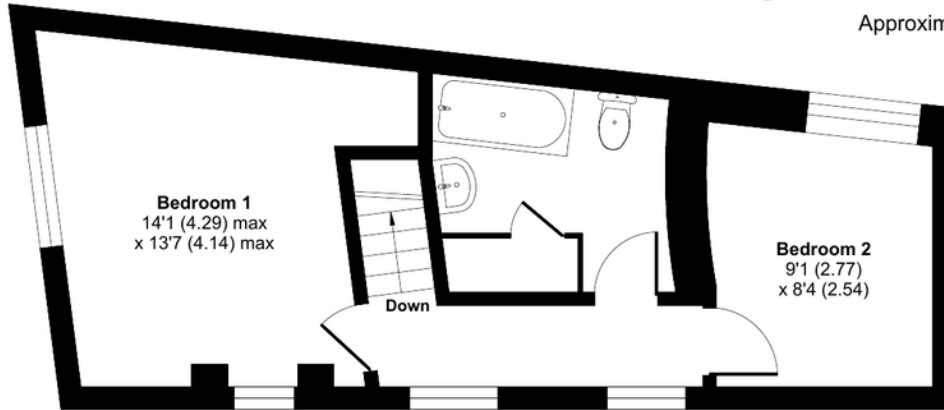
Teign Street, Teignmouth, TQ14

Approximate Area = 718 sq ft / 66.7 sq m

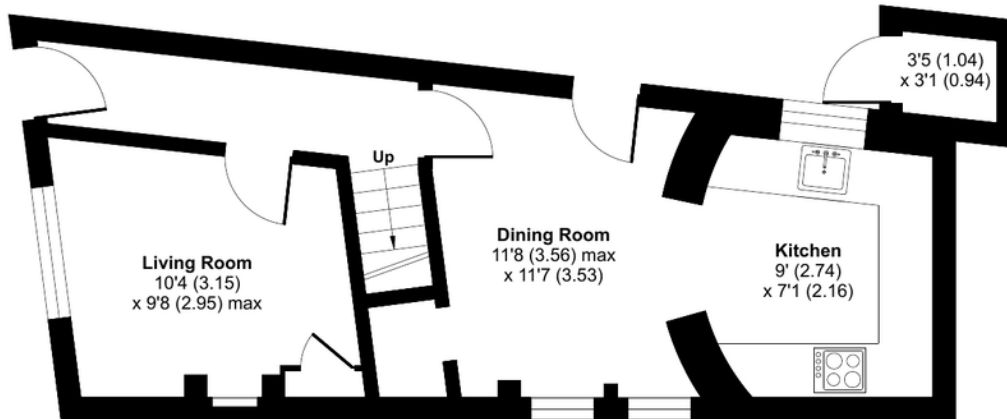
Outbuilding = 11 sq ft / 1 sq m

Total = 729 sq ft / 67.7 sq m

For identification only - Not to scale



FIRST FLOOR



GROUND FLOOR



Floor plan produced in accordance with RICS Property Measurement 2nd Edition, Incorporating International Property Measurement Standards (IPMS2 Residential). © n|cheom 2024. Produced for Ashtons Complete (Complete Property). REF: 1214319



Our note. For clarification we have prepared these sales particulars as a general guide and have not carried out a detailed survey nor tested the services, appliances or fittings. Room sizes should not be relied upon for carpets or furnishings. If there are any important matters which are likely to affect your decision to buy, please contact us before viewing this property. These particulars, whilst believed to be accurate, are set out as a general outline only for guidance and do not constitute any part of an offer or contract. Intending purchasers should not rely on them as statements of representation of fact, but must satisfy themselves by inspection or otherwise as to their accuracy. No person in the employment of Complete Property Services has the authority to make or give any representation or warranty in respect of the property.

SKETCH PLAN FOR ILLUSTRATIVE PURPOSES ONLY. All measurements and sizes and locations of walls, doors, window fittings and appliances are shown conventionally and are approximate only and cannot be regarded as being a representation either by the Seller or his Agent. We hope that these plans will assist you by providing you with a general impression of the layout of the accommodation. The plans are not to scale nor accurate in detail. © Unauthorised reproduction prohibited.

As part of the service we offer we may recommend ancillary services to you which we believe will help with your property transaction. We wish to make you aware that should you decide to proceed we will receive a referral fee. This could be a fee, commission, payment or other reward. We will not refer your details unless you have provided consent for us to do so. You are not under any obligation to provide us with your consent or to use any of these services, but where you do you should be aware of the following referral fee information. You are also free to choose an alternative provider. To find out more about this, please speak to a member of the team.



Need a more complete picture? Get in touch with your local branch...

Tel [01626 870 870](tel:01626870870)
Email teignmouth@completeproperty.co.uk
Web completeproperty.co.uk

Complete
13 Wellington Street
Teignmouth
Devon
TQ14 8HW

Are you selling a property too? Call us to get a set of property details like these...

selling

letting

land &
new homes

signature
homes

complete.