



2 Villa Place Albion Road, Great Yarmouth

£200,000 Freehold

Guide Price: £200,000-£210,000. Positioned within the heart of Great Yarmouth, this four-bedroom home balances modern style with family-friendly practicality. A spacious lounge welcomes both relaxation and social gatherings, while the sleek kitchen offers ample storage and contemporary finishes suited to daily life. Upstairs, the bedrooms are generously proportioned and naturally bright, complemented by a stylish family bathroom and the added luxury of a private en-suite to the principal room. Versatility runs throughout, with space easily adapted for a home office or study as lifestyles demand. Beyond the front door, amenities, schools, and green spaces sit close at hand, making the setting as convenient as it is connected. Altogether, this is a residence that unites comfort, location, and adaptability with understated ease.

Council Tax band: B

Tenure: Freehold

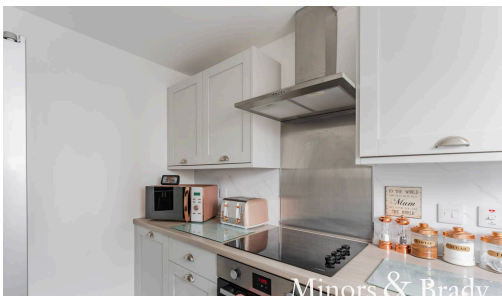
Guide Price: £200,000-£210,000. Positioned within the heart of Great Yarmouth, this four-bedroom home balances modern style with family-friendly practicality. A spacious lounge welcomes both relaxation and social gatherings, while the sleek kitchen offers ample storage and contemporary finishes suited to daily life. Upstairs, the bedrooms are generously proportioned and naturally bright, complemented by a stylish family bathroom and the added luxury of a private en-suite to the principal room. Versatility runs throughout, with space easily adapted for a home office or study as lifestyles demand. Beyond the front door, amenities, schools, and green spaces sit close at hand, making the setting as convenient as it is connected. Altogether, this is a residence that unites comfort, location, and adaptability with understated ease.

The Location

Set along the celebrated Norfolk coastline, Great Yarmouth offers a vibrant blend of seaside tradition and modern convenience. Renowned for its golden beaches, historic quayside, and lively promenade, the town balances a rich maritime heritage



Guide Price: £200,000-£210,000. Positioned within the heart of Great Yarmouth, this four-bedroom home balances modern style with family-friendly practicality. A spacious lounge welcomes both relaxation and social gatherings, while the sleek kitchen offers ample storage and contemporary finishes suited to daily life. Upstairs, the bedrooms are generously proportioned and naturally bright, complemented by a stylish family bathroom and the added luxury of a private en-suite to the principal room. Versatility runs throughout, with space easily adapted for a home office or study as lifestyles demand. Beyond the



Guide Price: £200,000-£210,000. Positioned within the heart of Great Yarmouth, this four-bedroom home balances modern style with family-friendly practicality. A spacious lounge welcomes both relaxation and social gatherings, while the sleek kitchen offers ample storage and contemporary finishes suited to daily life. Upstairs, the bedrooms are generously proportioned and naturally bright, complemented by a stylish family bathroom and the added luxury of a private en-suite to the principal room. Versatility runs throughout, with space easily adapted for a home office or study as lifestyles demand. Beyond the front door, amenities, schools, and green spaces sit close at hand, making the setting as convenient as it is connected. Altogether, this is a residence that unites comfort, location, and adaptability with understated ease.

The Location

Set along the celebrated Norfolk coastline, Great Yarmouth offers a vibrant blend of seaside tradition and modern convenience. Renowned for its golden beaches, historic quayside, and lively promenade, the town balances a rich maritime heritage with the amenities of contemporary living.

A wide array of shops, restaurants, and leisure facilities ensures daily needs and entertainment are well catered for, while schools and healthcare services strengthen its appeal for families.

Excellent transport links connect the town to Norwich in under 30 minutes by road or rail, with further connections to London and beyond, making it highly accessible while retaining its coastal charm. With its evolving cultural scene, strong sense of community, and the beauty of both sea and countryside close at hand, Great Yarmouth remains a location of enduring appeal.

Albion Road, Great Yarmouth

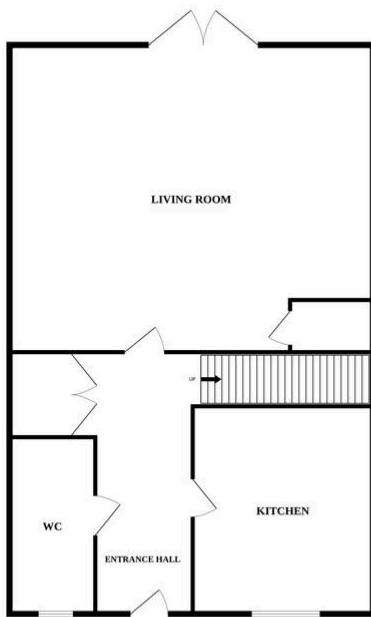
Upon entering, you are greeted by a bright and airy lounge, providing a welcoming space for relaxation and entertainment. The modern kitchen is fitted with sleek appliances and offers ample storage and worktop space.

The fashionable family bathroom is elegantly designed, featuring modern fixtures and fittings, providing a luxurious space to unwind and rejuvenate. The property also benefits from an ensuite to the master bedroom, offering a private sanctuary for the homeowner.

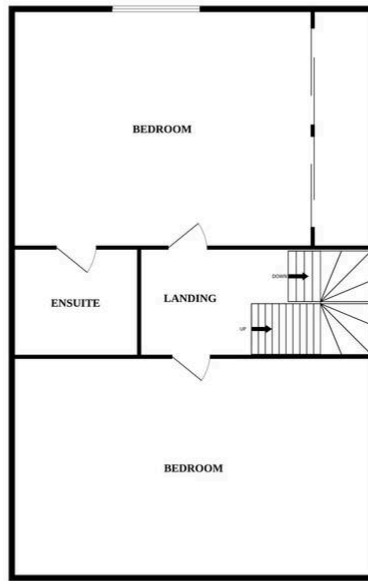
Each of the four bedrooms is well-proportioned and flooded with natural light, creating a comfortable atmosphere. The versatile



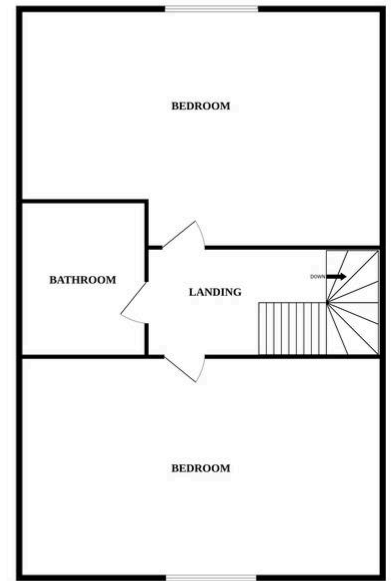
GROUND FLOOR



1ST FLOOR



2ND FLOOR



Whilst every attempt has been made to ensure the accuracy of the floorplan contained here, measurements of doors, windows, rooms and any other items are approximate and no responsibility is taken for any error, omission or mis-statement. This plan is for illustrative purposes only and should be used as such by any prospective purchaser. The services, systems and appliances shown have not been tested and no guarantee as to their operability or efficiency can be given.
Made with Metropix ©2022

You can include any text here. The text can be modified upon generating your brochure.

You can include any text here. The text can be modified upon generating your brochure.

