



14 Redhouse Court, Blackburn

Blackburn

Offers Over **£85,000**



14 Redhouse Court

Blackburn, Blackburn

Step into this beautifully converted first-floor flat, formerly a primary school, now a unique and charming residential building comprising similarly styled flats. Nestled in the heart of Blackburn, this property seamlessly combines character and modern living, making it an ideal opportunity for first-time buyers or investors seeking a practical yet stylish home.

Upon entry, a bright and inviting hallway welcomes you. This generous space provides ample room for freestanding furniture, allowing for personalisation and a warm, welcoming feel that sets the tone for the rest of the home.



One of the property's standout features is the spacious dining lounge area. Large double windows flood the room with natural light, creating a bright and airy ambiance. The versatile layout comfortably accommodates multiple couches, providing an ideal setting for relaxing and entertaining guests. Its neutral, modern décor enhances its stylish appeal, while the dining area offers a perfect space for shared meals in comfort and practicality.

A bright and functional kitchen awaits, boasting sleek white cabinetry paired with contrasting black worktops. With ample cupboard and unit space, this area includes designated spots for freestanding appliances like a cooker and washer/dryer. The design is both practical and appealing, making meal preparation a pleasure.

The bathroom brings a spa-like atmosphere, complete with a large bathtub and overhead shower. Its generous layout allows for freestanding storage, blending luxury with practicality. The partially tiled design adds a contemporary touch, creating a serene space for relaxation.

The king-sized bedroom offers a cosy yet spacious retreat. Providing room for freestanding furniture and featuring stylish fitted wardrobes, this tranquil space blends comfort with functionality. The additional storage ensures a neat and inviting environment, ideal for unwinding after a long day.

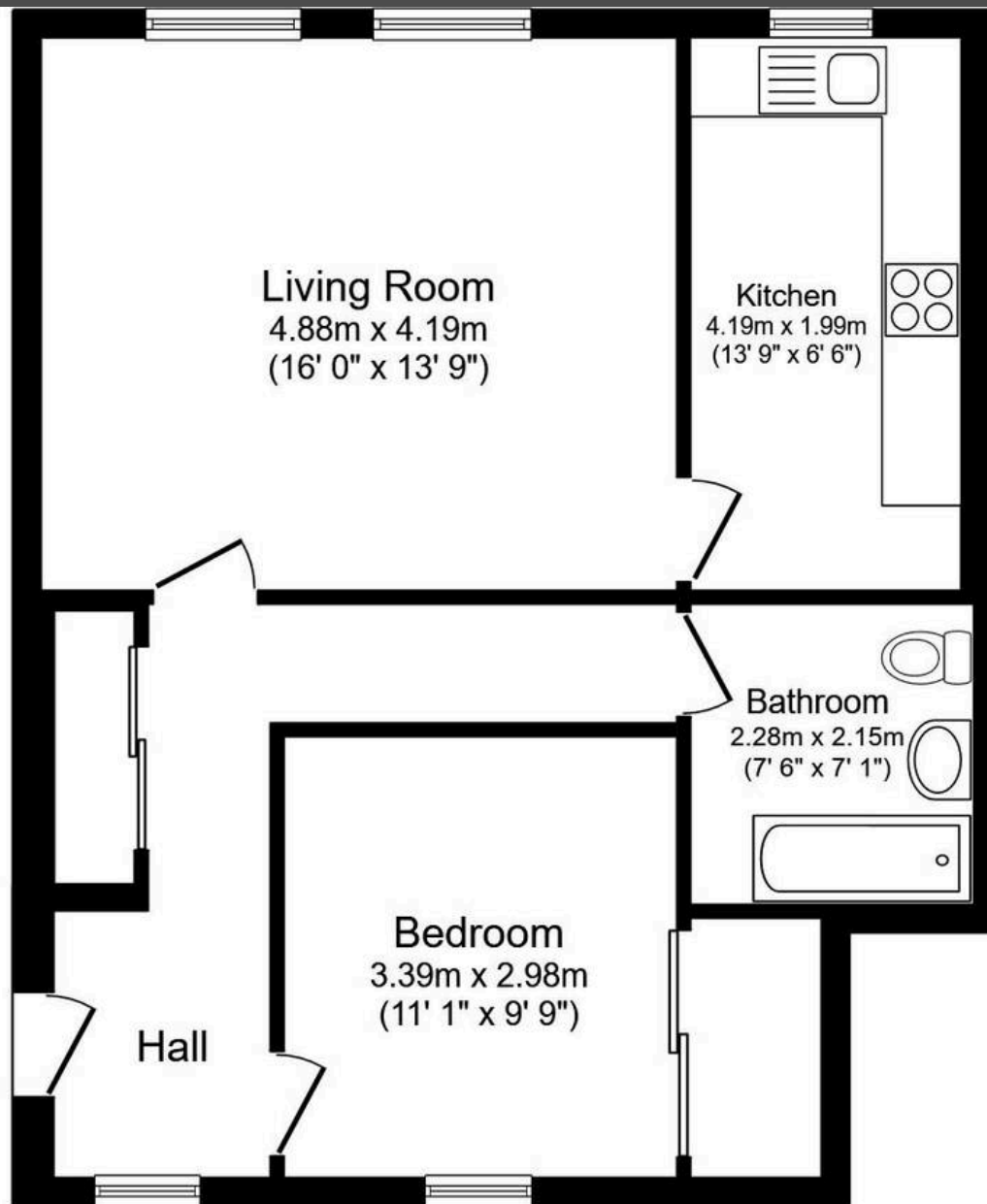
An allocated on-site parking space enhances the property's convenience. Situated centrally, the flat benefits from nearby local amenities in Blackburn, with more extensive facilities available in Livingston and Bathgate.

Filled with charm, modern touches, and excellent potential, this walk-in-ready flat delivers stylish, spacious living areas within a character-filled converted building. Perfect for first-time buyers or investors, it provides a practical yet cosy home that combines comfort, elegance, and a prime location.

Don't miss out on this rare opportunity to own a home that perfectly balances character and modern convenience. Contact us today to arrange a viewing!







Total floor area 57.8 sq.m. (623 sq.ft.) approx

This floor plan is for illustrative purposes only. It is not drawn to scale. Any measurements, floor areas (including any total floor area), openings and orientation are approximate. No details are guaranteed, they cannot be relied upon for any purpose and they do not form part of any agreement. No liability is taken for any error, omission or misstatement. A party must rely upon its own inspection(s). Plan produced for Your Move. Powered by www.focalagent.com



Bridges Properties

94 West Main Street, Whitburn - EH47 0QU

01501519435

info@bridges-properties.co.uk

www.bridges-properties.co.uk/

