



Squires Court, Canterbury Gardens

Salford



Offers Over **£140,000**

Squires Court

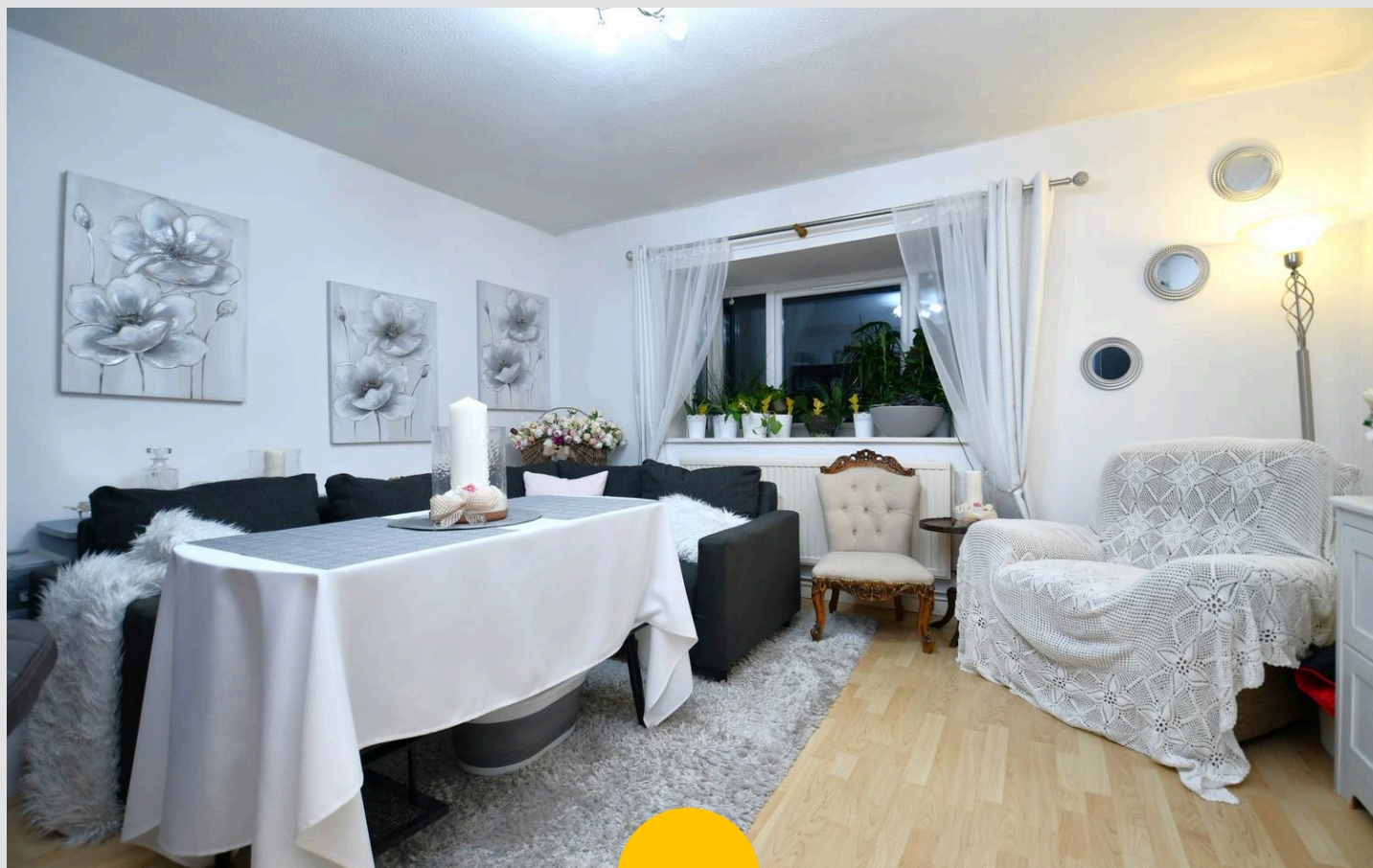
Salford

Just a Stone's Throw from Ladywell Tram Stop and Salford Royal Hospital TAKE A LOOK at this SPACIOUS three bedroom top floor apartment! Tastefully decorated throughout and benefitting from a popular location!

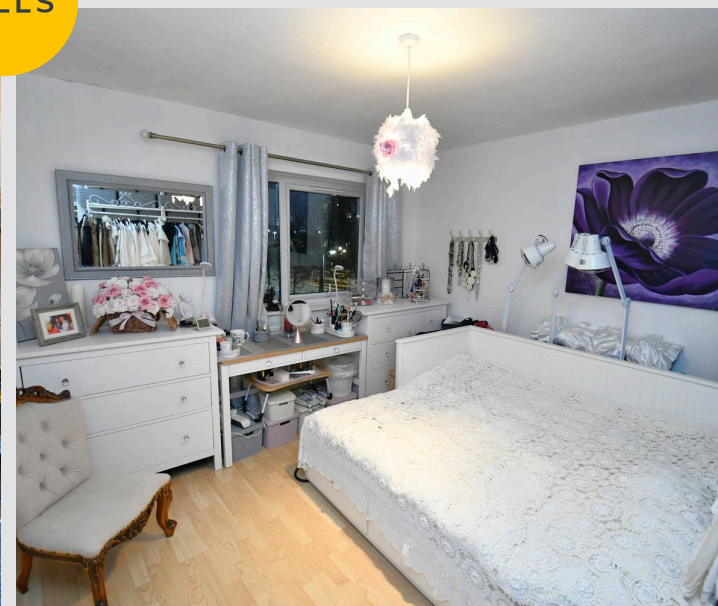
Council Tax band: B

Tenure: Leasehold

- Spacious Three Bedroom Top Floor Apartment
- Located on the Popular Canterbury Gardens Development
- Boasting Three Generously-Sized Bedrooms
- Stylish Three-Piece Bathroom
- Well-Maintained Communal Gardens
- Communal Parking and Secure Intercom Access
- Just a Short Walk from Salford Royal Hospital and Eccles Town Centre
- A Stone's Throw from Ladywell Tram Stop, which Provides Direct Access into Salford Quays, Media City and Manchester City Centre



HILLS



Entrance Hallway

Complete with ceiling spotlights and laminate flooring.

Lounge / Diner

14' 0" x 12' 4" (4.26m x 3.76m)

Complete with a ceiling light point, double glazed window and wall mounted radiator. Fitted with laminate flooring.

Kitchen

10' 0" x 11' 5" (3.04m x 3.48m)

Featuring complementary fitted units with integral hob and oven. Space for a washing machine. Complete with a ceiling light point and double glazed window. Fitted with laminate flooring.

Bedroom One

12' 0" x 11' 5" (3.67m x 3.48m)

Complete with a ceiling light point, double glazed window and wall mounted radiator. Fitted with laminate flooring.

Bedroom Two

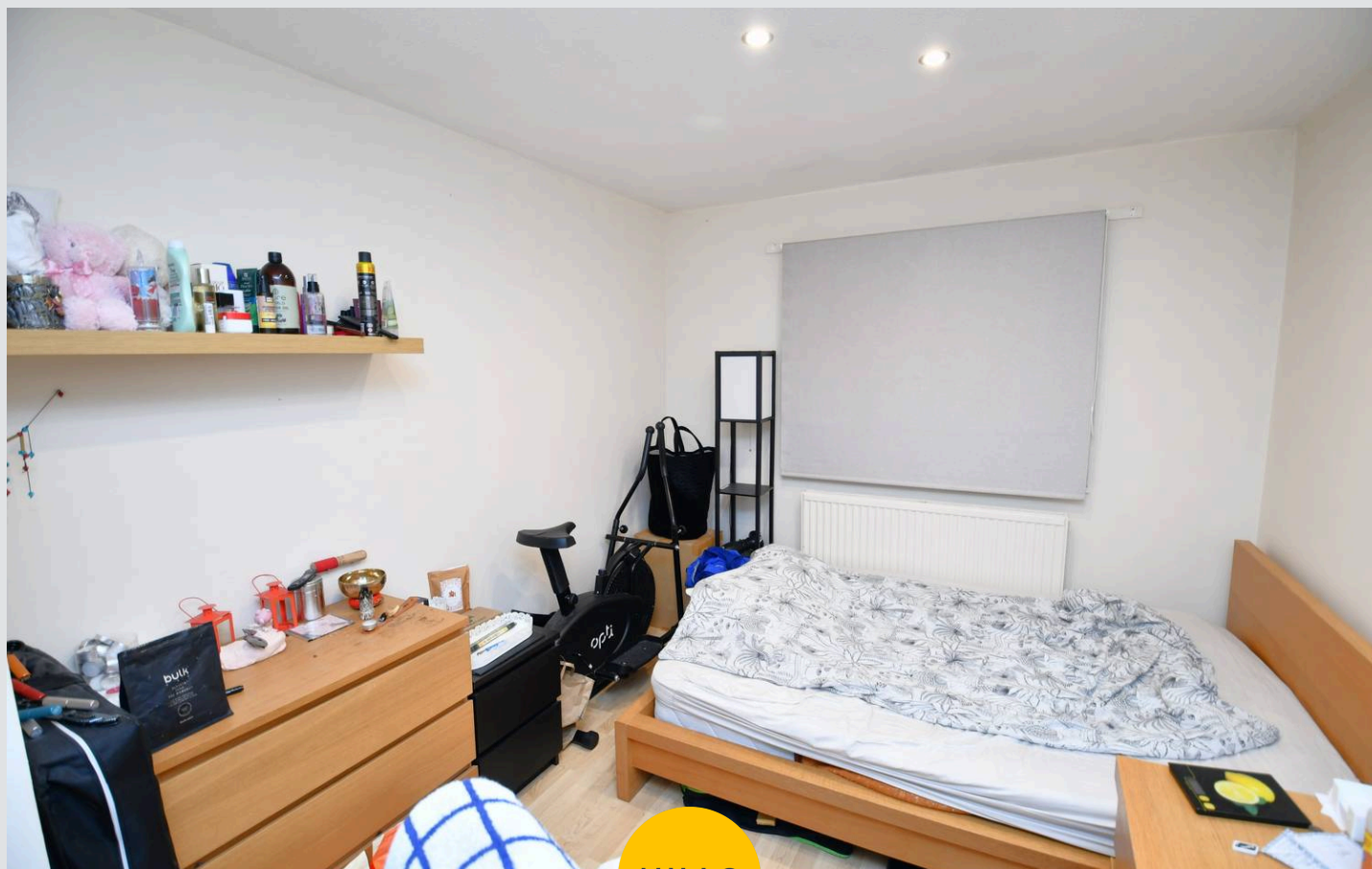
12' 0" x 7' 9" (3.66m x 2.37m)

Complete with a ceiling light point, double glazed window and wall mounted radiator. Fitted with laminate flooring.

Bathroom

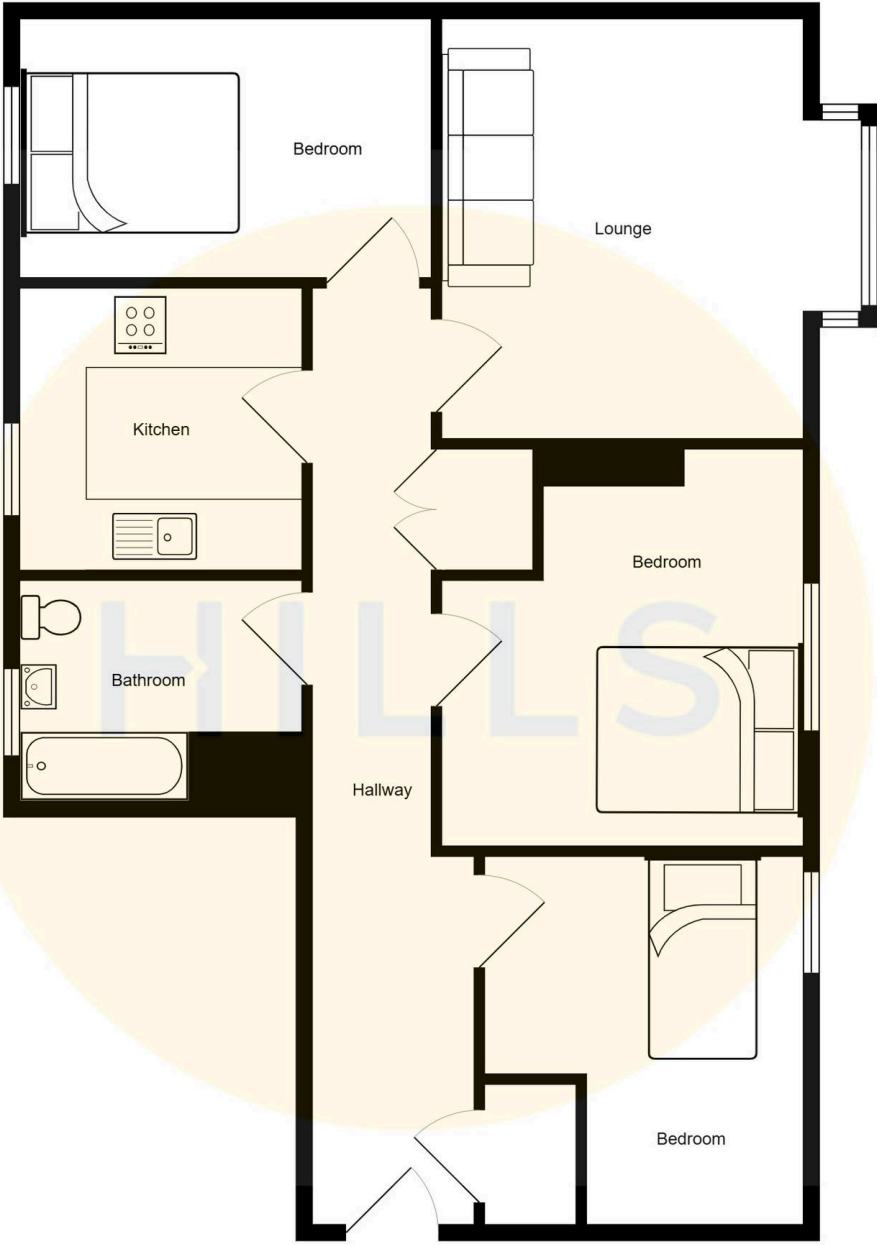
7' 2" x 6' 10" (2.19m x 2.09m)

Featuring a three piece suite including a bath with shower over, hand wash basin and W.C. Complete with a ceiling light point, double glazed window, part tiled walls and tiled flooring.



HILLS







Hills | Salfords Estate Agent

Hills Residential, Sentinel House Albert Street - M30 0SS

0161 707 4900

sales@hills.agency

www.hills.agency/



THE PROPERTY MISDESCRIPTIONS ACT 1991 The Agent has not tested any apparatus, equipment, fixtures and fittings or services and so cannot verify that they are in working order or fit for the purpose. A Buyer is advised to obtain verification from their Solicitor or Surveyor. References to the Tenure of a Property are based on information supplied by the Seller. The Agent has not had sight of the title documents. A Buyer is advised to obtain verification from their Solicitor. You are advised to check the availability of this property before travelling any distance to view. Every effort and precaution has been made to ensure these particulars are correct and not misleading but their accuracy is not guaranteed nor do they form part of any contract. If there is any point which is of particular importance to you, please contact us and we will provide any information you require. This is advisable, particularly if you intend to travel some distance to view the property. The mention of any appliances and services within these details does not imply that they are in full and efficient working order. These particulars are in draft form awaiting Vendors confirmation of their accuracy. These details must therefore be taken as a guide only.