



14 New Road, Bromyard - HR7 4AJ
£825 PCM



hollywell
homes 

14 New Road

Bromyard, Bromyard

Hollywell Homes are proud to bring to market this charming two-bedroom property boasts generously sized bedrooms and a well-presented interior. The front and rear gardens offer ample outdoor space, ideal for relaxing or entertaining guests.

Council Tax band: C

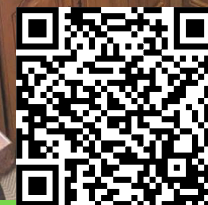
Tenure: Freehold

EPC Energy Efficiency Rating: E

EPC Environmental Impact Rating: F

- Two Bedroom Property
- Generous Size Bedrooms
- Well Presented
- Front and Rear Garden
- Charming Property
- Available early January



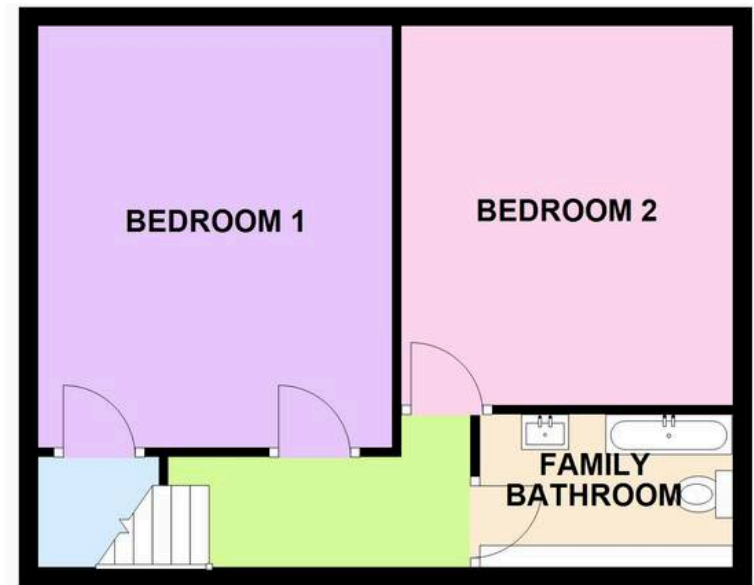




GROUND FLOOR



FIRST FLOOR



This plan is for illustrative purposes only, its details are approximate and no liability is taken for any discrepancies
Plan produced using PlanUp.

Entrance Hall

Lounge

11' 6" x 12' 6" (3.51m x 3.80m)

Lounge/Dining Room

10' 6" x 10' 8" (3.19m x 3.24m)

Kitchen/Breakfast Room

13' 5" x 8' 1" (4.09m x 2.46m)

Rear Porch

Landing

Bedroom 1

10' 8" x 14' 4" (3.26m x 4.37m)

Bedroom 2

11' 6" x 11' 8" (3.51m x 3.55m)

Family Bathroom



**hollywell
homes**





Hollywell Homes

Unit 13 Canalside Office Complex, Lowesmoor Wharf - WR1 2RS

01905 948848

info@hollywellhomes.co.uk

<http://www.hollywellhomes.co.uk/>



hollywell
homes 