



11 Periwinkle Court, 15 Pasteur Drive

Swindon

In Excess of £194,950

mfarlan
property

11 Periwinkle Court

, Swindon

This modern second-floor apartment in Old Town offers convenience and style. Just a short walk from shops and schools, it features an open-plan living area with a sleek kitchen, a master bedroom with en-suite, two further bedrooms, and a family bathroom. Benefits include secure entry, electric heating, and allocated parking.

Council Tax band: D

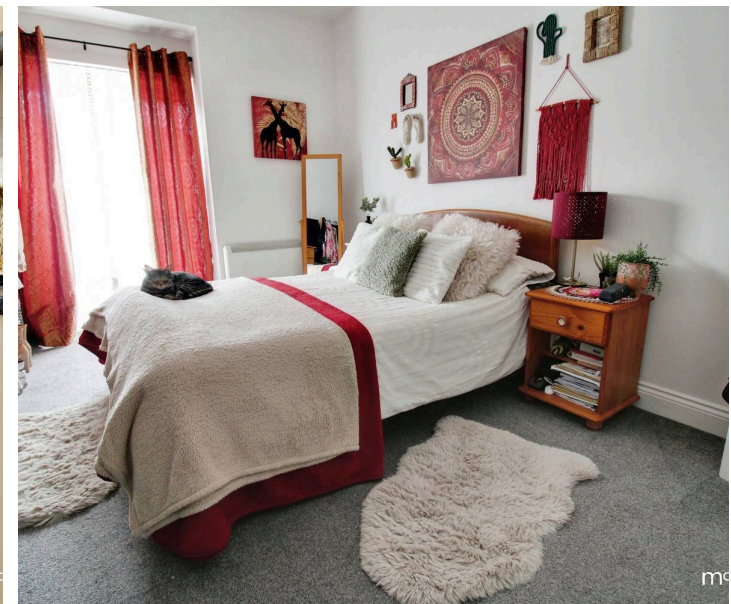
Tenure: Leasehold

EPC Energy Efficiency Rating: C

EPC Environmental Impact Rating: C



mcfarlane



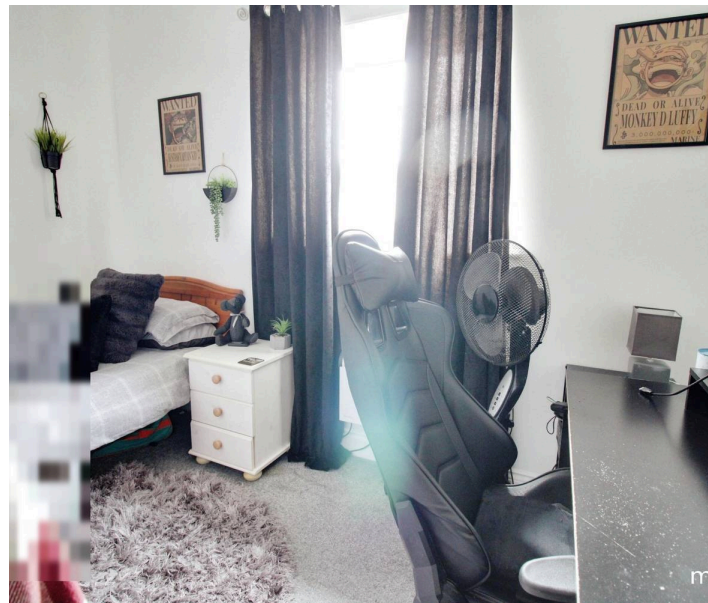
m



11 Periwinkle Court

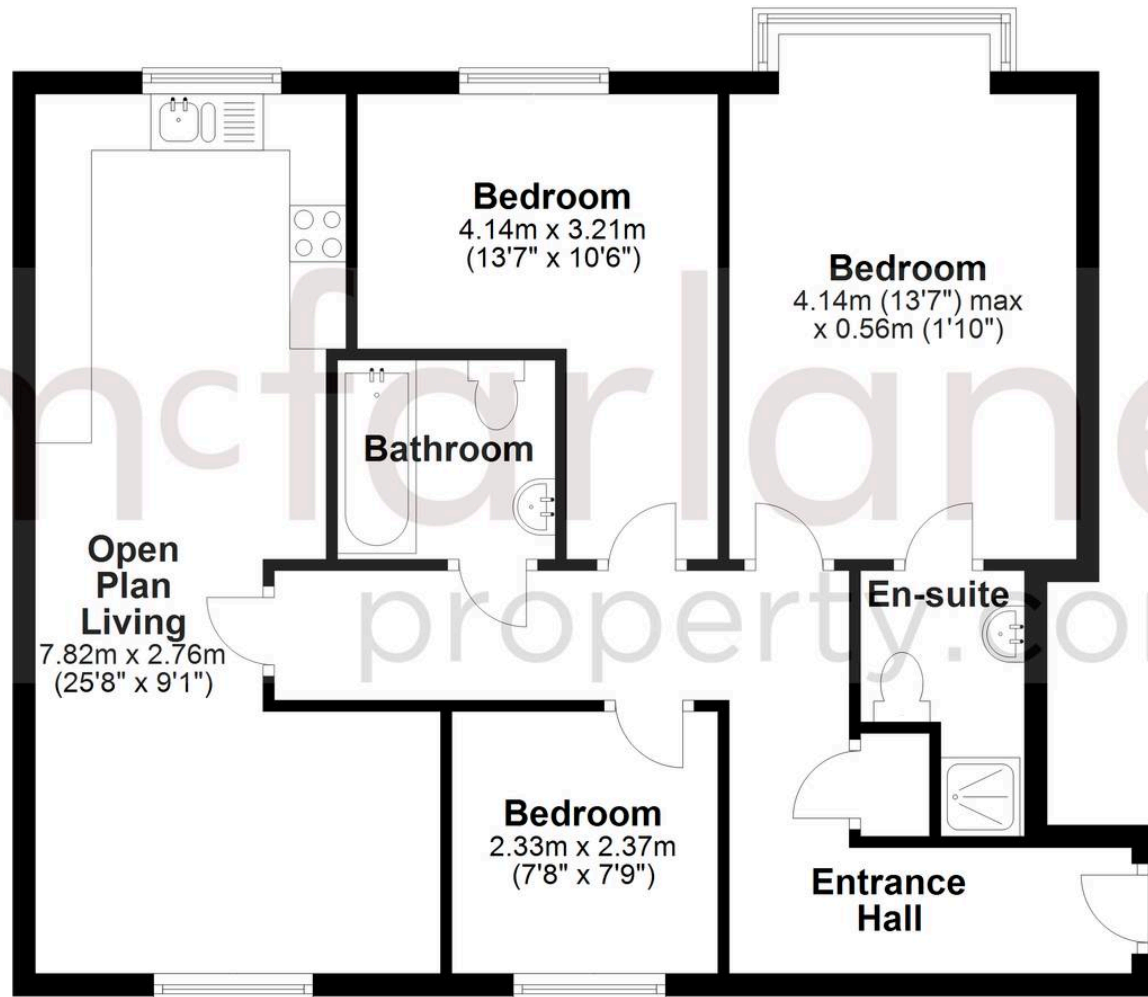
Old Town, Swindon

- THREE BEDROOM APARTMENT
- ALLOCATED PARKING
- NO ONWARD CHAIN
- SPACIOUS OPEN PLAN LIVING
- EN-SUITE TO MASTER
- SN1 LOCATION



Second Floor

Approx. 72.3 sq. metres (777.7 sq. feet)



Total area: approx. 72.3 sq. metres (777.7 sq. feet)

McFarlane Sales & Lettings

McFarlane Sales & Letting Ltd, 28-30 Wood Street - SN1 4AB

01793 611841 • lettings@mcfarlaneproperty.com • www.mcfarlaneproperty.com/

mcfarlane
property.com