



11 Periwinkle Court, 15 Pasteur Drive

Swindon

£194,950

mfarlan  
property

# 11 Periwinkle Court

Swindon

This modern second-floor apartment in Old Town offers convenience and style. Just a short walk from shops and schools, it features an open-plan living area with a sleek kitchen, a master bedroom with en-suite, two further bedrooms, and a family bathroom. Benefits include secure entry, electric heating, and allocated parking.

Length of Lease: 105 years

Service Charge: £1,848 pa

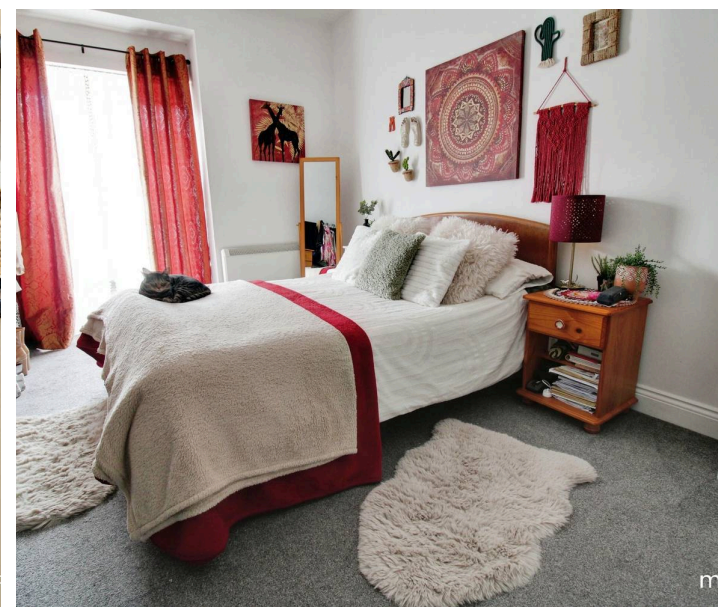
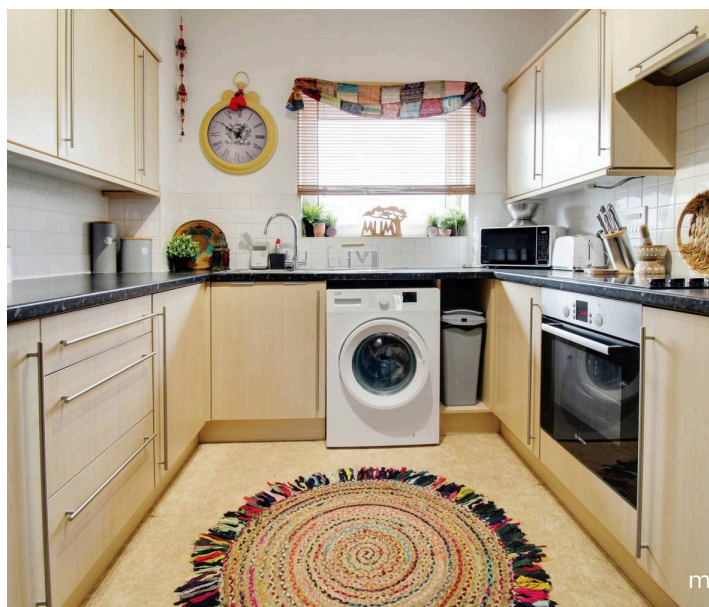
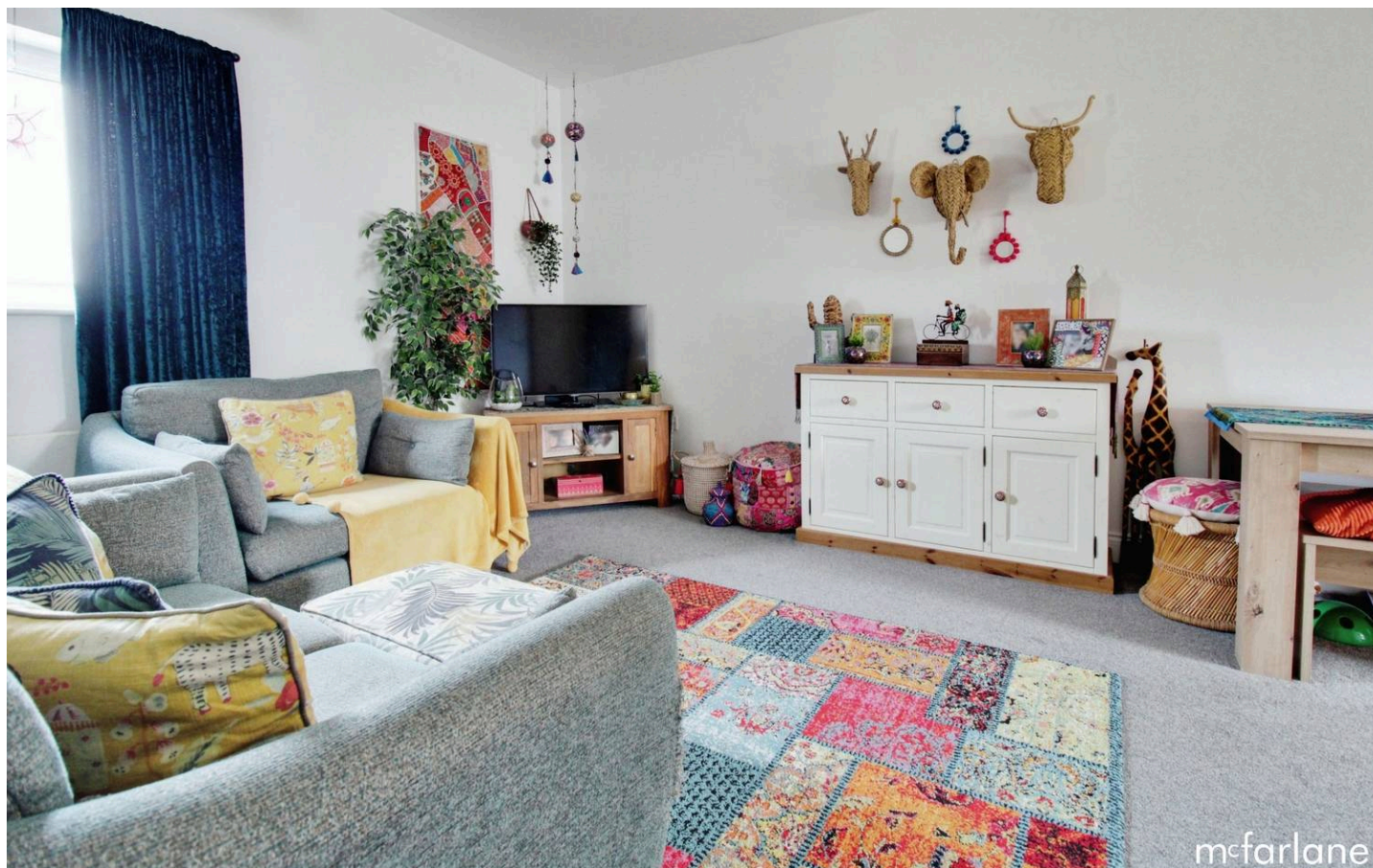
Ground Rent: £252.00 pa

Council Tax band: D

Tenure: Leasehold

EPC Energy Efficiency Rating: C

EPC Environmental Impact Rating: C

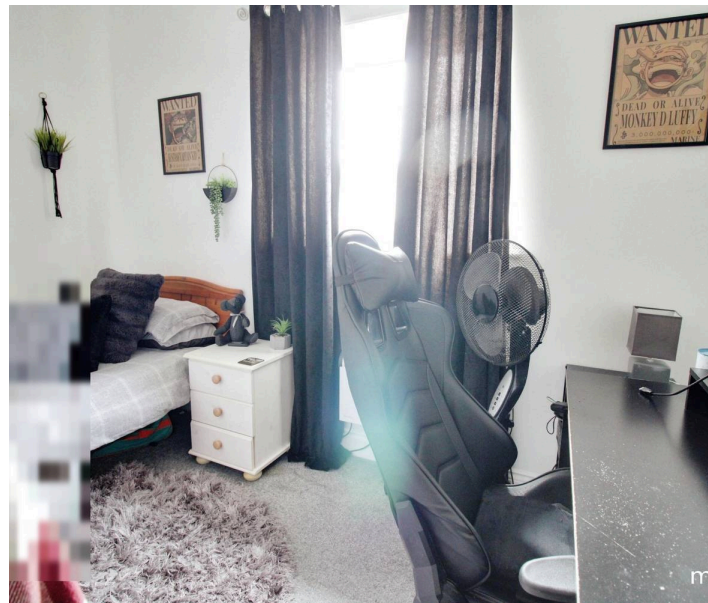




## 11 Periwinkle Court

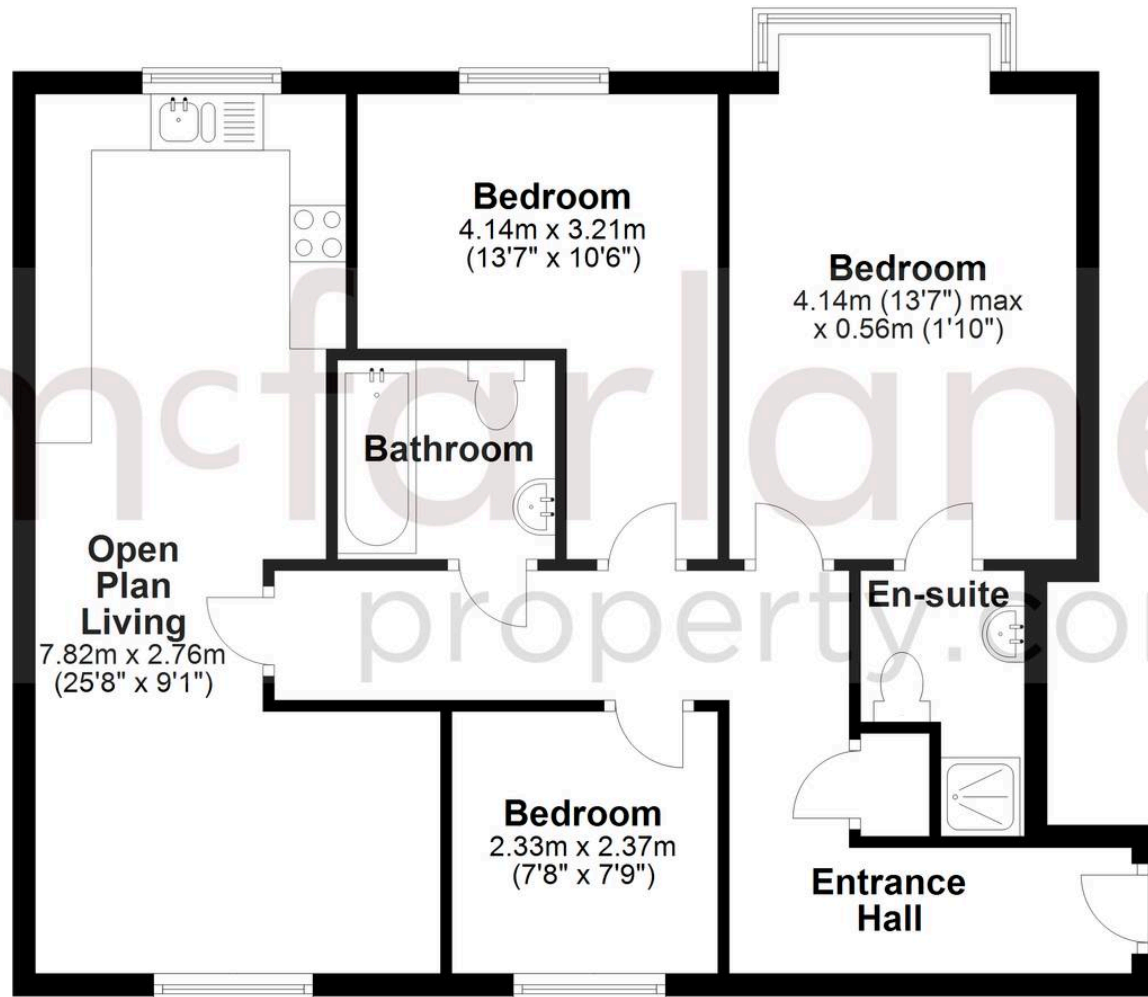
Old Town, Swindon

- THREE BEDROOM APARTMENT
- ALLOCATED PARKING
- NO ONWARD CHAIN
- SPACIOUS OPEN PLAN LIVING
- EN-SUITE TO MASTER
- SN1 LOCATION



## Second Floor

Approx. 72.3 sq. metres (777.7 sq. feet)



Total area: approx. 72.3 sq. metres (777.7 sq. feet)

## McFarlane Sales & Lettings

McFarlane Sales & Letting Ltd, 28-30 Wood Street - SN1 4AB

01793 611841 • [lettings@mcfarlaneproperty.com](mailto:lettings@mcfarlaneproperty.com) • [www.mcfarlaneproperty.com/](http://www.mcfarlaneproperty.com/)

**mcfarlane**  
property.com