



Manhattan Building, Bow Quarter, 60 Fairfield Road

London

Guide Price £400,000

OLIVER *OJ* JAQUES
EST. 1986

Manhattan Building

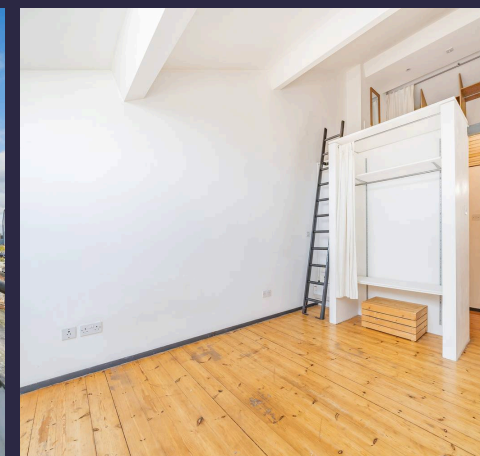
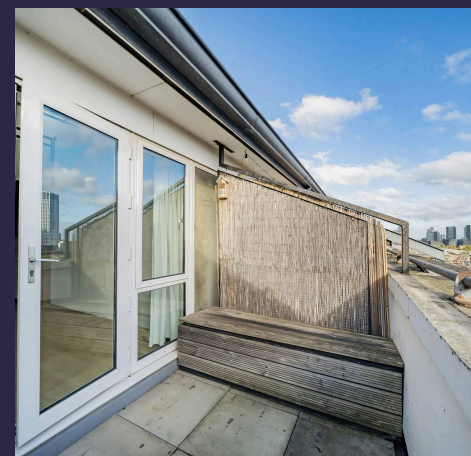
Bow Quarter, London

Situated on the top of the Manhattan Building within the very popular and historical development of Bow Quarter is this impressive one bedroom Duplex style apartment. Benefitting from underground parking space, private roof terrace with views towards Canary Wharf and interesting and flexible layout.

Council Tax band: C

EPC Energy Efficiency Rating: C

- Top Floor Warehouse Style Apartment in the Popular Bow Quarter Development
- Spacious Mezzanine Style Bedroom with additional Mezzanine Study Area
- Private (South facing) Terrace
- Secure Parking Space
- 24 Hour Concierge, Communal Gymnasium and Swimming Pool
- 0.4 Miles to Bow Church Station (DLR) & 0.6 Miles to Bow Road Station (District/Hammersmith and City)
- Beautiful Landscaped Grounds, On Site Coffee Shop and Convenience Store
- Tenure - Leasehold - 89 years remaining
- Ground Rent £125.00 Service Charge £3900 (Approx)



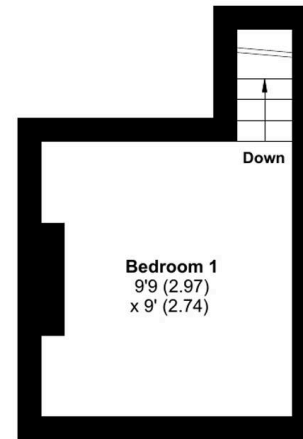
Bow Quarter, Fairfield Road, London, E3

Approximate Area = 594 sq ft / 55.1 sq m

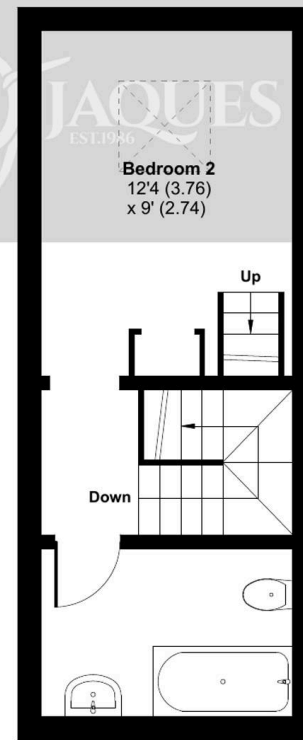
For identification only - Not to scale



FIFTH FLOOR



SEVENTH FLOOR



SIXTH FLOOR





Oliver Jaques Bow

Oliver Jaques Estate Agents Ltd, Unit A Arlington Building - E3 2UB

02089800999 • East@o-j.co.uk • o-j.co.uk/