



MILE



MILE



MILE



MILE



MILE

St. Johns Avenue, London NW10

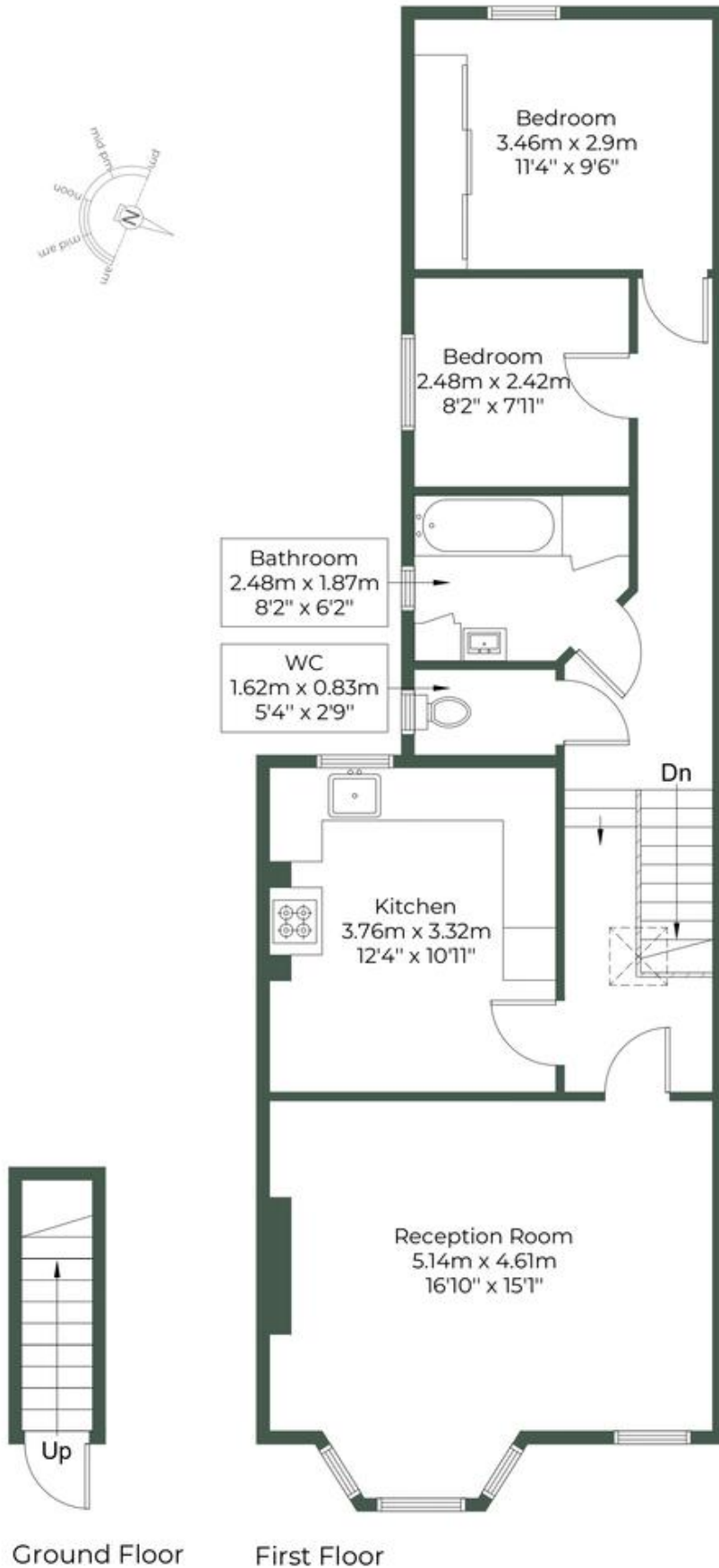
£415,000 Share of Freehold

Welcome to St Johns Avenue, one of the most sought-after roads in the area. This charming two-bedroom residence, offering a share of the freehold, seamlessly blends period elegance with modern comfort. Step inside to discover a home brimming with character: from the beautifully preserved period features to the large, inviting reception room. This space boasts impressive bay windows that flood the room with natural light and a striking feature fireplace that creates a warm and welcoming focal point. The kitchen diner is thoughtfully designed, providing an ideal space for both culinary creations and casual dining. Each room reflects the property's excellent condition, ensuring a move-in-ready experience. Located just a short stroll from the verdant expanse of Roundwood Park, this property offers not just a home but a lifestyle enriched by proximity to nature and a vibrant community. Don't miss the opportunity to own a piece of timeless charm on St Johns Avenue.

- Period conversion
- First floor apartment
- Two double bedrooms
- Share of freehold
- Potential to extend (STPP)
- Original features
- 790 sq ft
- Short walk to open green space of Roundwood Park
- Good location
- Close to shops and transport

ST. JOHNS AVENUE, NW10 4ED

Approximate Gross Internal Area = 73.4 sq.m / 790 sq.ft



Ground Floor

First Floor



MONEY LAUNDERING REGULATIONS 2003: Intending purchasers will be asked to produce identification documentation at a later stage and we would ask for your co-operation in order that there will be no delay in agreeing the sale.

General: While we endeavour to make our sales particulars fair, accurate and reliable, they are only a general guide to the property and, accordingly, if there is any point which is of particular importance to you, please contact the office and we will be pleased to check the position for you, especially if you are contemplating travelling some distance to view the property.

Measurements: These approximate room sizes are only intended as general guidance. You must verify the dimensions carefully before ordering carpets or any built-in furniture.

Services: Please note we have not tested the services or any of the equipment or appliances in this property, accordingly we strongly advise prospective buyers to commission their own survey or service reports before finalising their offer to purchase.