



Malmo Tower Bailey Street, London

London

In Excess of £400,000

OLIVER *OJ* JAQUES
EST. 1986

Malmo Tower Bailey Street, London

Council Tax band: B

Tenure: Leasehold

EPC Energy Efficiency Rating: B

EPC Environmental Impact Rating: A

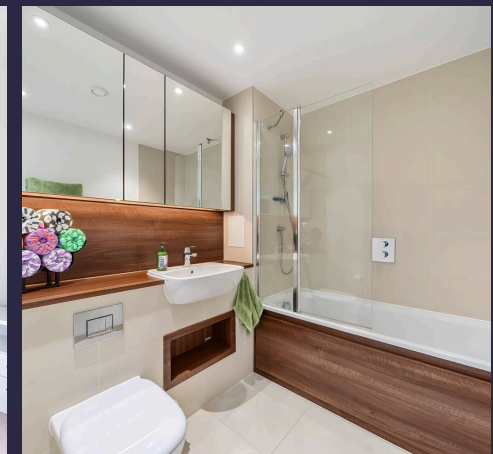
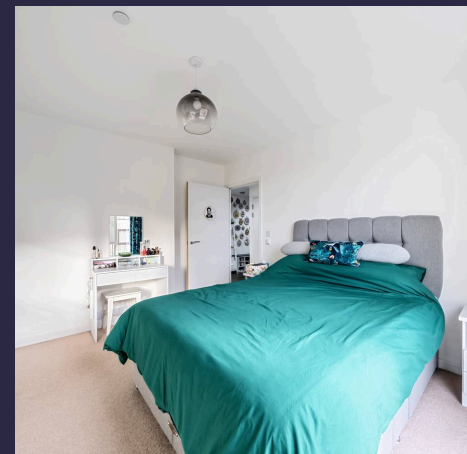
- Still Under NHBC Warranty
- Sixth Floor
- 24hr Concierge & Residents' Gym
- Close To Canada Water Masterplan
- Greenland Place, SE8

Tenure - Leasehold

Lease Expiry - 15/11/3011

Ground Rent - £437.66 per year

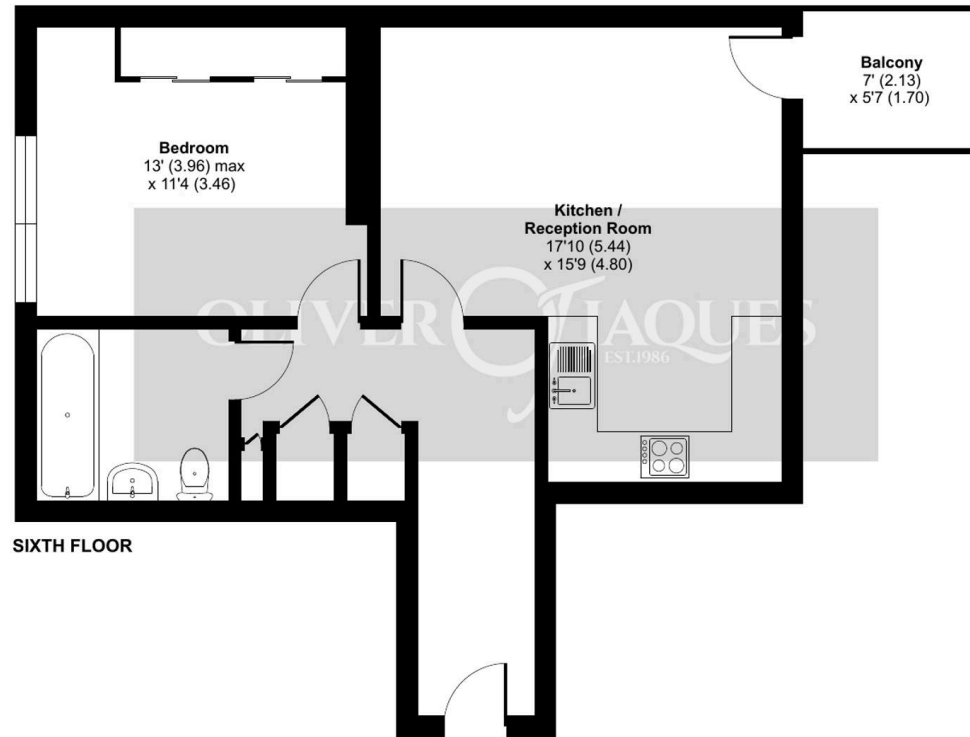
Service Charge - £2,749.75 per year

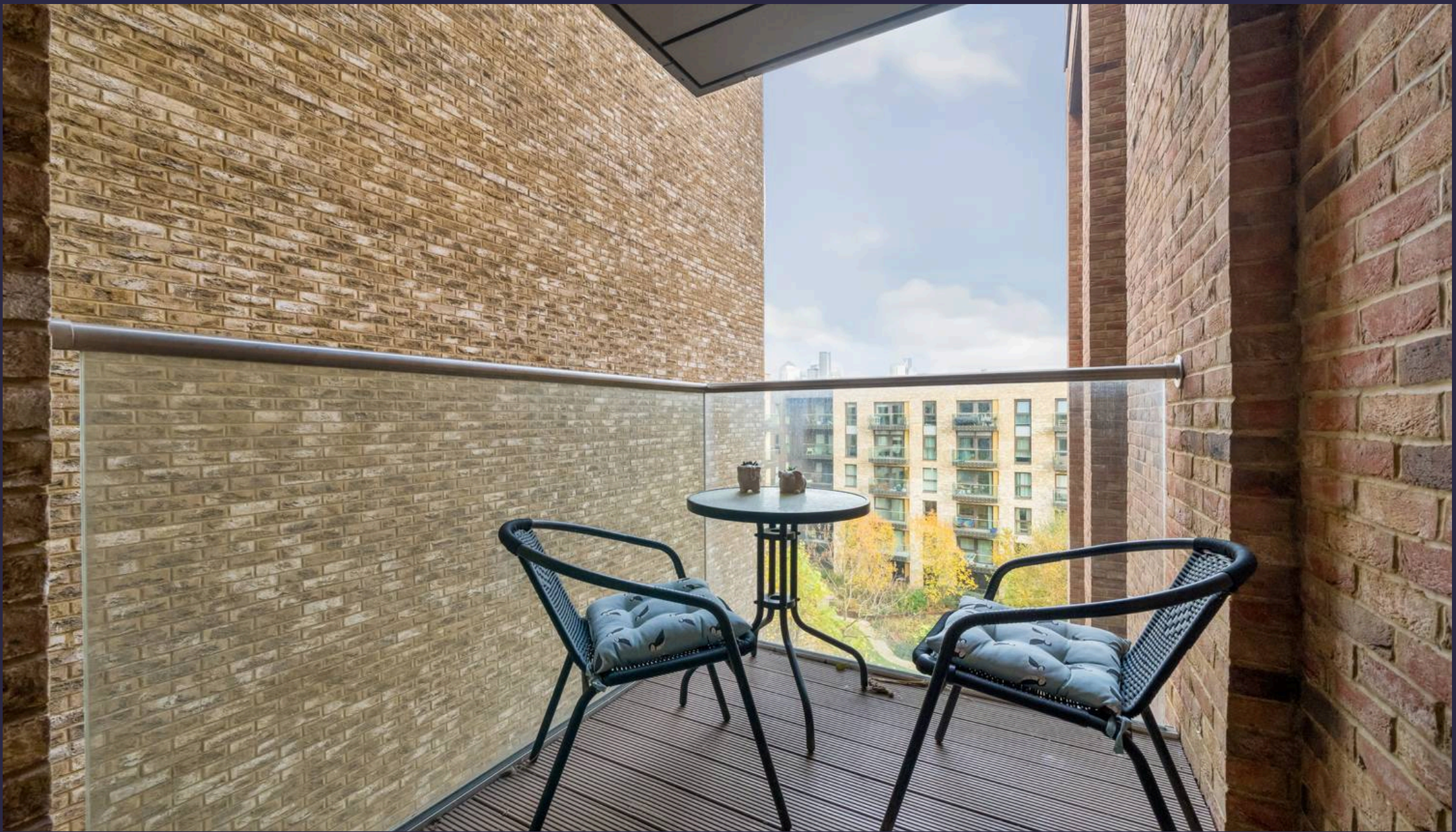


Malmo Tower, Bailey Street, London, SE8

Approximate Area = 575 sq ft / 53.4 sq m

For identification only - Not to scale





Oliver Jaques

Oliver Jaques, 229-231 Lower Road - SE16 2LW

02072315050 • southeast@o-j.co.uk • o-j.co.uk/

Every care has been taken with the preparation of this brochure but it is for general guidance and complete accuracy can't be guaranteed. Prospective purchasers should seek clarification from their solicitor. The mention of any appliances fixtures or fittings does not imply they are in working order.