



**HINTON**  
residential

SALES, LETTINGS & MANAGEMENT

**Tallack Close**

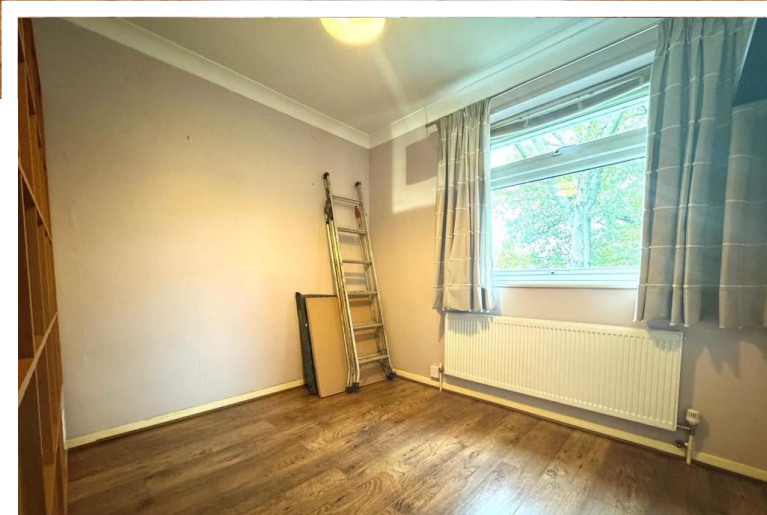
Harrow HA3 7DN

- Two double bedroom
- First Floor Maisonette
- Share of Freehold
- Garage

**Asking Price Of £350,000**

EPC Rating 'TBC'





## Property Description

A TWO DOUBLE BEDROOM first floor Maisonette with its own front door located on a small residential close just off of the highly sought after College Hill Road. The property is less than 10 minutes walking distance to the High Road so there is easy access to the local amenities, including Waitrose, Lidl and Harrow Weald Bus Garage. The apartment is also conveniently placed for access to schools.

The maisonette comprises two good sized double bedrooms with space for wardrobes, a large reception room with space for dining, a shower room with shower cubicle, W.C and basin, a modern black gloss kitchen fitted with double oven, a washer dryer, a dishwasher and a fridge freezer. The property further benefits from gas central heating, loft space for storage and a garage.

We have been advised the property is a share of freehold.

SCHOOLS Located within one mile of:

Weald Rise Primary School - Ofsted rated 'Good'  
Salvatorian College - Ofsted rated 'Good'



Sacred Heart Language College - Ofsted rated 'Outstanding'  
Whitefriars School - Ofsted rated 'Outstanding'

Within two miles of:

Avanti House - Private school  
Hujjat Primary school - Ofsted rated 'Good'  
Hatch End High School - Ofsted rated 'Good'

%epϙGraph\_c\_1\_325%

399 High Road  
Harrow  
Middlesex  
HA3 6EL

[www.hintonresidential.com](http://www.hintonresidential.com)  
[sales@hintonanddownes.com](mailto:sales@hintonanddownes.com)  
0208 861 1066

Agents Note: Whilst every care has been taken to prepare these sales particulars, they are for guidance purposes only. All measurements are approximate and for general guidance purposes only and whilst every care has been taken to ensure their accuracy, they should not be relied upon and potential buyers are advised to recheck the measurements