



Harmonds Wood Close, Broxbourne, Herts.

  
**Reynolds Salter**  
Estate Agents









**CHAIN FREE** - An Attractive Four Bedroom Detached House ideally located at the entrance to this highly sought after development on the fringe of Broxbourne Woodland. This delightful home has been in the same family ownership since it was built in 2009 by Leach Homes, and provides bright, spacious and versatile accommodation presented in excellent decorative order throughout. The rear garden provides a high degree of privacy, being mainly laid to lawn surrounded by various trees, bushes plants and shrubs, a paved patio/seating area and a courtesy door leading into the Detached Double Garage at the rear. The front garden is mainly laid to lawn surrounded by bushes and trees, with two off road parking spaces in front of the garage and a pathway leading to the front door. The development is well placed for all local amenities to include local shops, schools and Broxbourne Railway Station with its fast and frequent service into London Liverpool Street.

**EPC - C**

- **Detached Family Home**
- **Four Bedrooms**
- **Excellent Decorative Order**
- **Well Established Gardens**
- **Detached Double Garage**
- **Chain Free**

The logo for Reynolds Salter Estate Agents, featuring a stylized yellow house icon above the text "Reynolds Salter" in a bold, black serif font, with "Estate Agents" in a smaller, black sans-serif font below it.

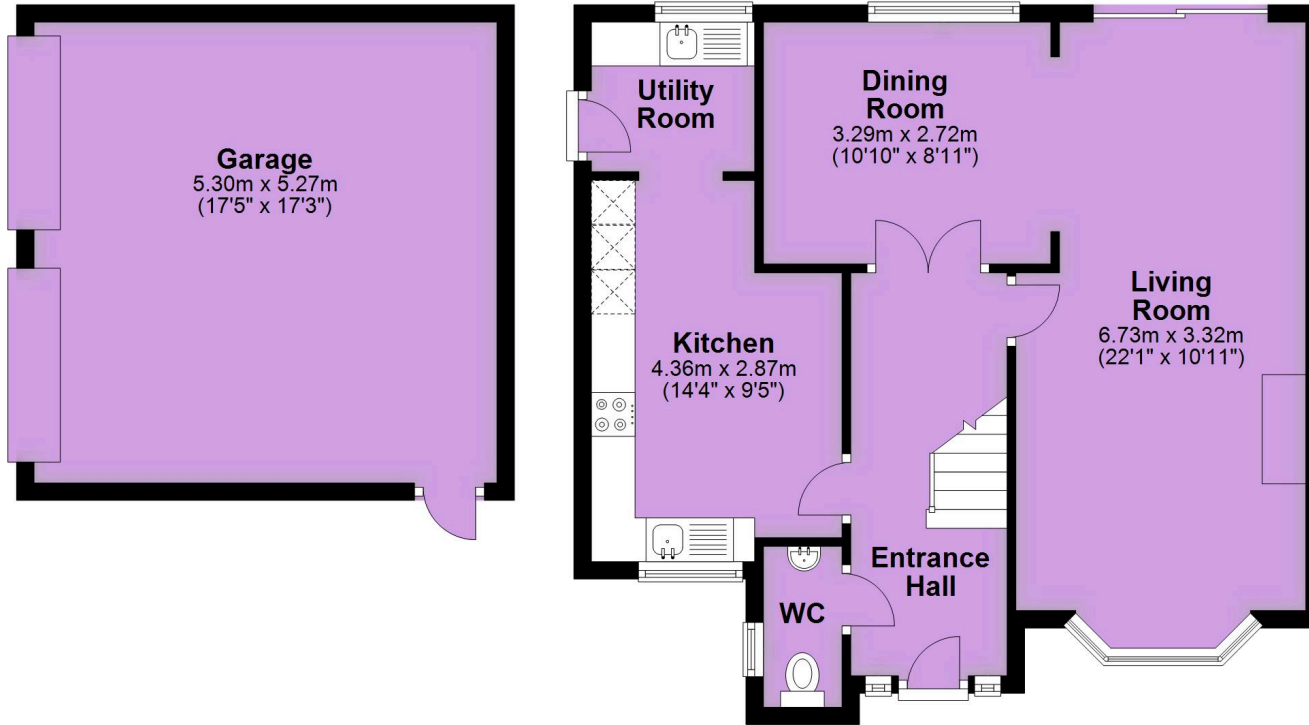
25a High Road, Broxbourne,  
Herts, EN10 7HX  
[www.reynoldssalter.co.uk](http://www.reynoldssalter.co.uk)

01992 449000



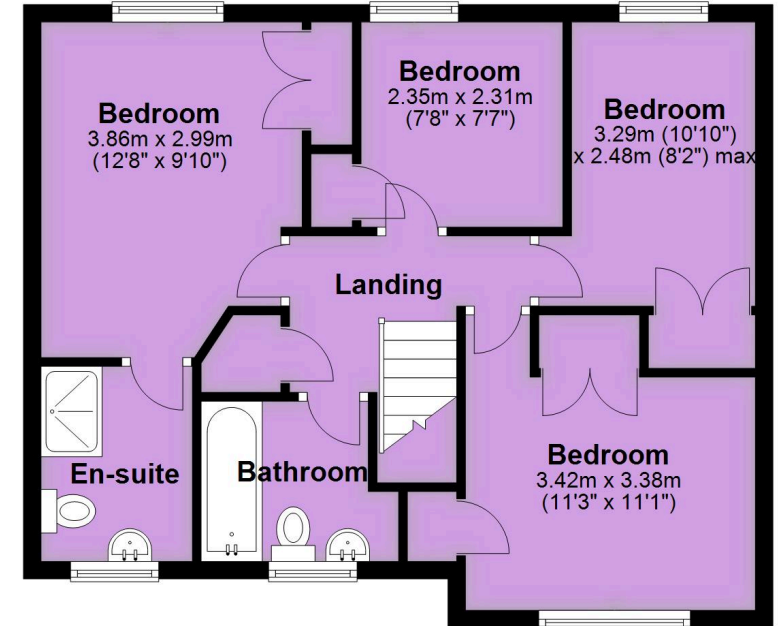
## Ground Floor

Approx. 56.5 sq. metres (607.8 sq. feet)



## First Floor

Approx. 53.6 sq. metres (577.0 sq. feet)



### Important notice

1. Particulars: These particulars are not an offer or contract, nor part of one. You should not rely on statements by Reynolds Salter in the particulars or by word of mouth or in writing ("information") as being factually accurate about the property, its condition or its value. Neither Reynolds Salter nor any joint agent has any authority to make any representations about the property, and accordingly any information given is entirely without responsibility on the part of the agents, seller(s) or lessor(s). 2. Photos etc: The photographs show only certain parts of the property as they appeared at the time they were taken. Areas, measurements and distances given are approximate only. Regulations etc: Any reference to alterations to, or use of, any part of the property does not mean that any necessary planning, building regulations or other consent has been obtained. A buyer or lessee must find out by inspection or in other ways that these matters have been properly dealt with and that all information is correct. 4. VAT: The VAT position relating to the property may change without notice.