



**A CHARMING 2 BEDROOM HOME WITH A LOFT ROOM / POTENTIAL THIRD
BEDROOM WITH A VELUX WINDOW**

Flag Walk, Eastcote, Pinner, HA5 2EP

ROBSONS

A CHARMING 2 BEDROOM HOME WITH A LOFT ROOM / POTENTIAL THIRD BEDROOM WITH A VELUX WINDOW

Flag Walk, Eastcote, Pinner, HA5 2EP

ENTRANCE HALLWAY • LARGE RECEPTION ROOM • KITCHEN • TWO BEDROOMS • LOFT ROOM / POTENTIAL THIRD BEDROOM • FAMILY BATHROOM • SAUNA • LANDSCAPED REAR GARDEN • GARAGE

Description

Situated in a desirable cul-de-sac within easy reach of local high streets, schools and excellent transport links, is this charming two-bedroom end-of-terrace, benefiting from a loft room and sauna, with a sizeable landscaped rear garden and great potential.

The ground floor comprises an entrance hallway with stairs to the first floor, a large reception room, and a kitchen with access to the garden. To the first floor there is a three-piece family bathroom, a principal bedroom with fitted wardrobes, and a further bedroom complete with access to a loft room / potential third bedroom and a sauna.





Externally, the property features a large, landscaped rear garden with a variety of shrubs and flowers. There is also a garage in a nearby block.

Location

Flag Walk is located off High Road Eastcote, close to both Pinner and Eastcote High Streets, with Northwood Hills also nearby. For commuters, the Metropolitan Line and the Piccadilly Line are available at Pinner and/or Eastcote Underground Stations, with local bus routes easily accessible.

The area is well served by primary and secondary schooling, including Coteford Infant School and Coteford Junior School, with plenty of local parks and woodland also close by.

Additional Information

Tenure: Freehold

Local Authority: London Borough of Hillingdon

Council Tax Band: E

Energy Efficiency Rating: TBC

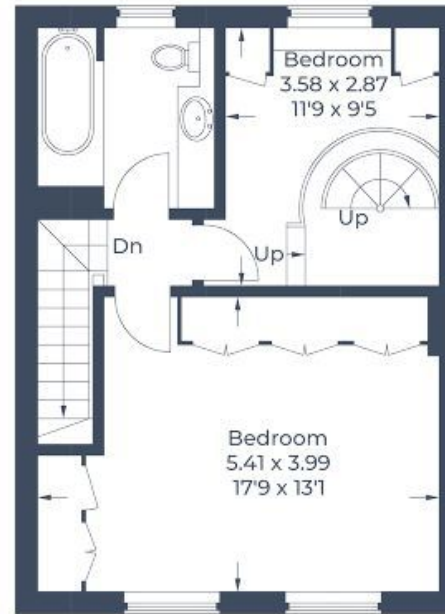
For additional information, please refer to www.robsonswb.com or call us on: 020 8866 8083.



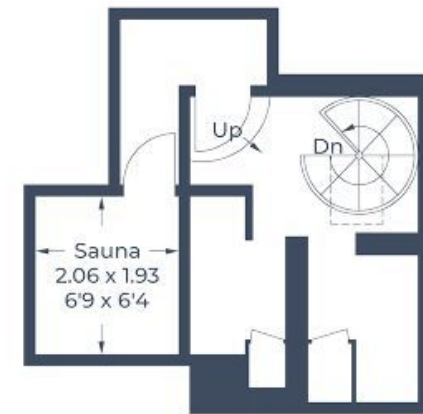
Approximate Gross Internal Area
Ground Floor = 47.5 sq m / 511 sq ft
First Floor = 41.7 sq m / 449 sq ft
Second Floor = 20.1 sq m / 216 sq ft
Total = 109.3 sq m / 1,176 sq ft



Ground Floor



First Floor



Second Floor

Illustration for identification purposes only,
measurements are approximate, not to scale.
© CJ Property Marketing Produced for Robsons

ROBSONS

1 High Street, Pinner HA5 5PJ
Tel: 020 8866 8083 Email: pinner@robsonswb.com

www.robsonswb.com