



Gardeners Cottage, Pinkney, Malmesbury, Wiltshire, SN16 0PD

£1,250 pcm

A delightful 2 bedroom Cotswold stone barn conversion, in lovely rural location approximately a mile from the popular village of Sherston.

01666 840 886 jamespyle.co.uk interested@jamespyle.co.uk

4 The Old School, High Street, Sherston SN16 0LH
James Pyle Ltd trading as James Pyle & Co. Registered in England & Wales No: 08184953
VAT Reg No: 142054549



The Property

DESCRIPTION Gardeners Cottage is a delightful two bedroom barn conversion, converted alongside two similar properties in the grounds of a beautiful country house. Situated in a rural area, the property has recently been renovated to a high standard and is offered on an unfurnished basis. It comprises of a lovely modern kitchen with an open plan breakfast room, living room, two double bedrooms and a shower room. There is also off street parking and a communal garden.

SITUATION The property is located Pinkney, a beautiful and rural hamlet about a mile from Sherston. Sherston has a thriving community and offers many facilities including a primary school, doctor's surgery, post office/general stores, hairdresser, two wine shops and two pubs and was recently voted as 5th Best Village in which to live by The Times. Close by are the market towns of Malmesbury and Tetbury and both towns offer a wide range of shops including Waitrose and Tesco supermarkets, services, excellent schools and leisure facilities. Junctions 17 & 18 of the M4 are both within 15 minutes drive providing easy commuter access to Bath, Bristol and Swindon whilst rail services to London-Paddington are available from Chippenham.

Directions

From Sherston head towards Malmesbury on the B4040. After 3/4 mile, at Pinkney, turn left at the crossroads and proceed up the lane for about 1/4 mile to locate the entrance to Gardeners Cottage on the right just after the entrance to Pinkney Court.

<https://w3w.co/flattens.brightly.reserve>

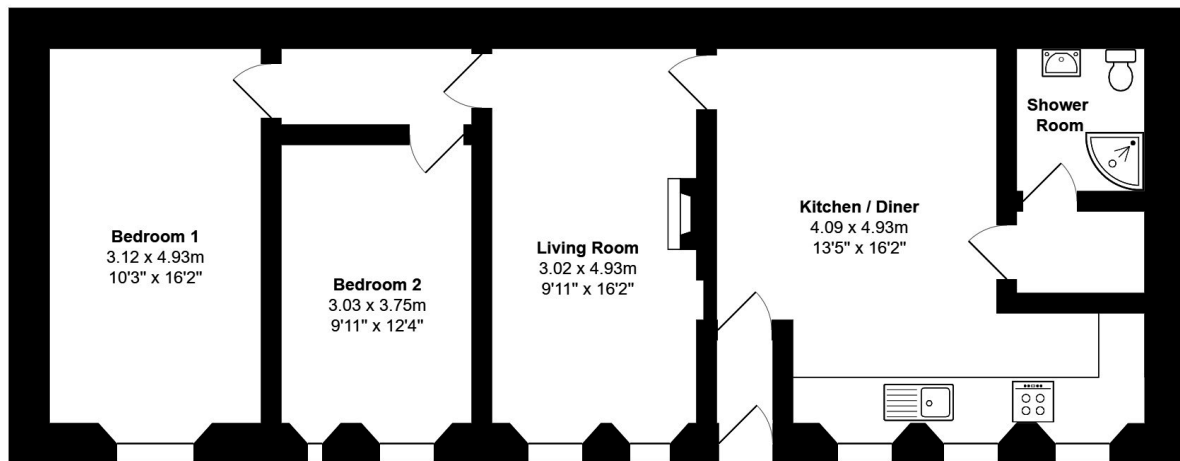
Local Authority

Wiltshire County Council

Council Tax

B £1,812

Score	Energy rating	Current	Potential
92+	A		
81-91	B		85 B
69-80	C		
55-68	D		
39-54	E	54 E	
21-38	F		
1-20	G		



Total Area: 81.9 m² ... 882 ft²

All measurements are approximate and for display purposes only