



KINGS
SALES LETTINGS MANAGEMENT



KINGS
SALES LETTINGS MANAGEMENT



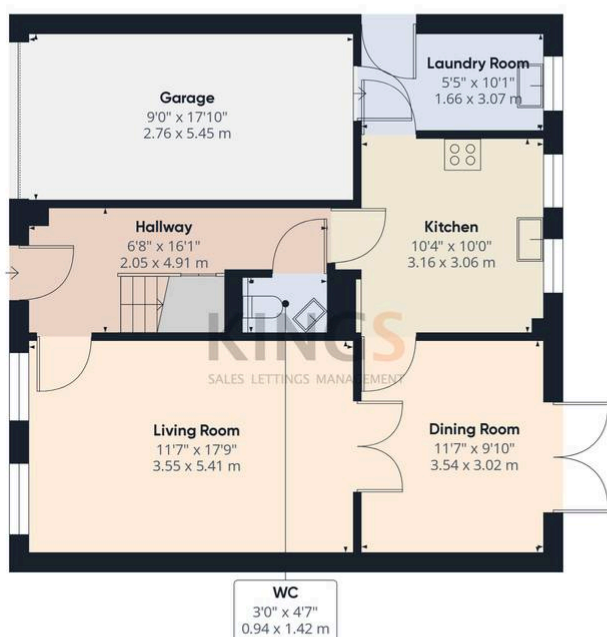
KINGS
SALES LETTINGS MANAGEMENT

Halifax Way, Welwyn Garden City

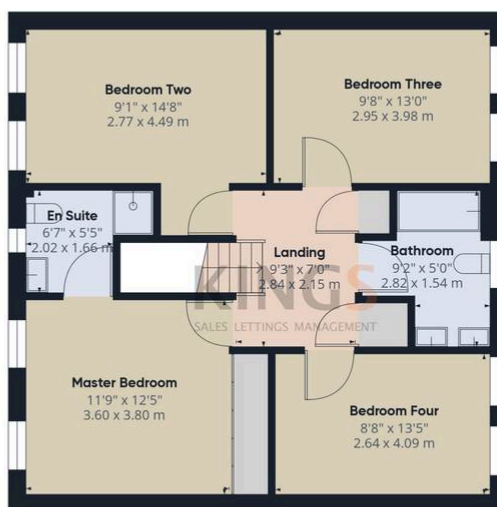
£2,750 PCM

DETACHED HOUSE • EN-SUITE TO MASTER • LIVING & DINING ROOMS • KITCHEN & UTILITY ROOM • MODERN FAMILY BATHROOM • DRIVEWAY • AVAILABLE ASAP • EPC RATING - D

KINGS
SALES LETTINGS MANAGEMENT



Ground Floor



Floor 1

Approximate total area⁽¹⁾
1487.36 ft²
138.18 m²

(1) Excluding balconies and terraces

While every attempt has been made to ensure accuracy, all measurements are approximate, not to scale. This floor plan is for illustrative purposes only.

Calculations are based on RICS IPMS 3C standard.

GIRAFFE360

You can include any text here. The text can be modified upon generating your brochure.

