



The Rowan, Restrop Road, Purton

Swindon

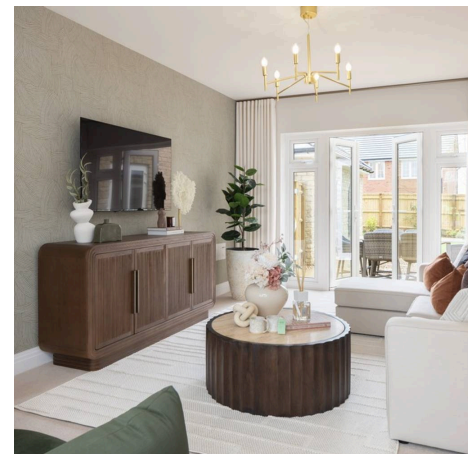
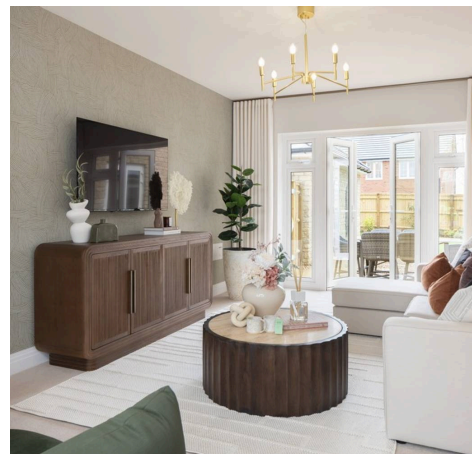


The Rowan, Restrop Road

Purton, Swindon

Welcome to this exquisite 4-bedroom detached house, a true NEW HOME gem. Step inside this IMPRESSIVE property to discover a spacious KITCHEN / DINING ROOM, perfect for hosting family gatherings, a separate SITTING ROOM for cosy evenings in, a STUDY / FAMILY ROOM ideal for remote work or peaceful reading, a convenient UTILITY room, and a WC on the ground floor. Upstairs, this property offers FOUR BRIGHT BEDROOMS, two of which feature EN-SUITE bathrooms, along with a chic FAMILY BATHROOM. Additionally, this beautiful home comes complete with a SINGLE GARAGE and TWO RESERVED PARKING SPACES for added convenience.

- NEW HOME
- DETACHED
- KITCHEN / DINING ROOM
- SEPARATE SITTING ROOM
- STUDY / FAMILY ROOM
- UTILITY
- WC
- FOUR BEDROOMS
- TWO EN-SUITES AND FAMILY BATHROOM
- SINGLE GARAGE AND 2 PARKING SPACES



Entrance Hall

Sitting Room

19' 2" x 11' 0" (5.85m x 3.36m)

Kitchen / Dining Room

17' 3" x 14' 4" (5.26m x 4.37m)

Study / family Room

12' 8" x 9' 9" (3.85m x 2.97m)

Utility

WC

Landing

Bedroom 1

17' 5" x 14' 4" (5.31m x 4.37m)

En-Suite

Bedroom 2

14' 6" x 9' 8" (4.41m x 2.95m)

En-suite

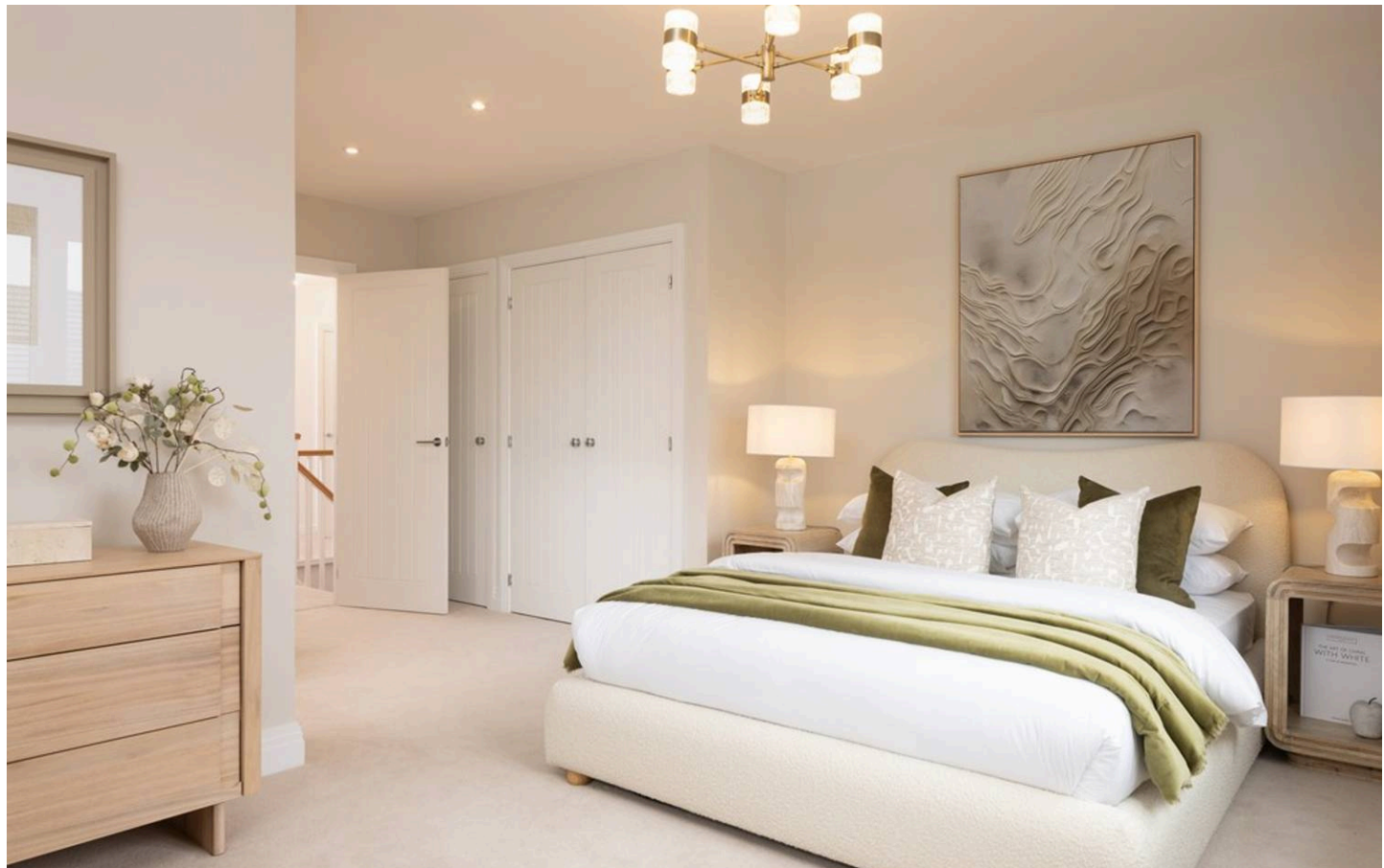
Bedroom 3

8' 2" x 13' 5" (2.49m x 4.08m)

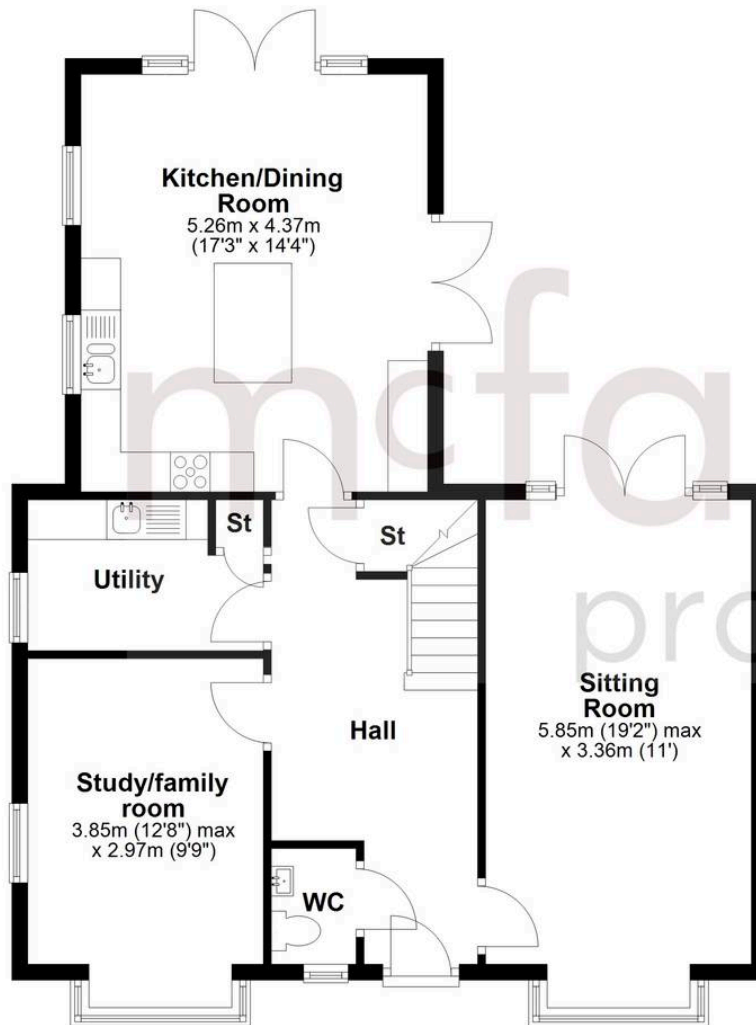
Bedroom 4

8' 1" x 11' 1" (2.47m x 3.39m)

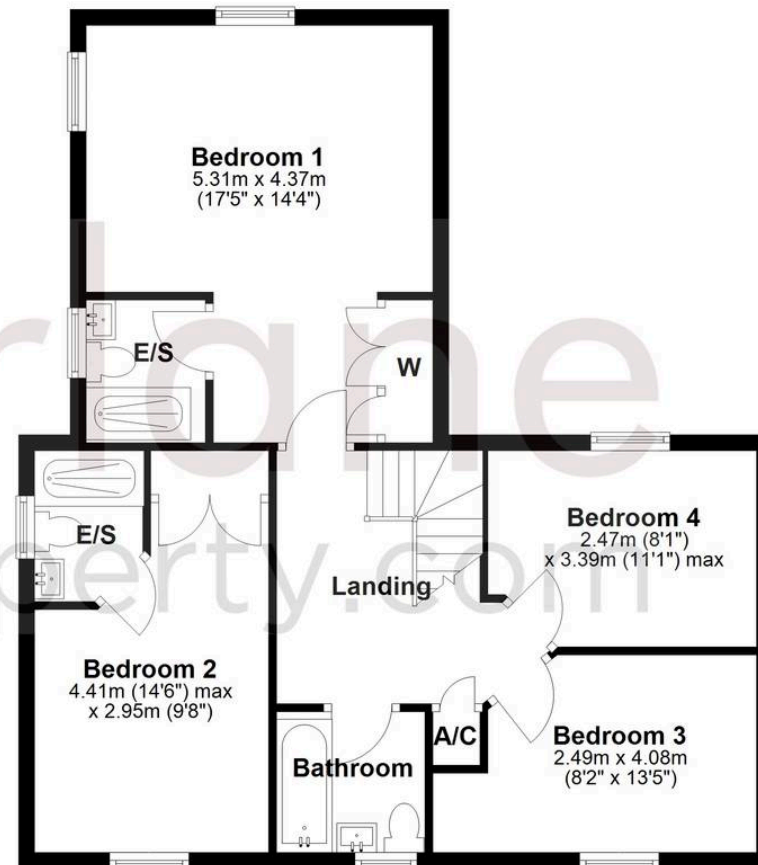
Bathroom



Ground Floor



First Floor



McFarlane Sales & Lettings

McFarlane Sales & Letting, 106 High Street - SN8 1LT

01672 514380 • marlborough@mcfarlaneproperty.com • www.mcfarlaneproperty.com/