


Complete Property Services Property Brochure

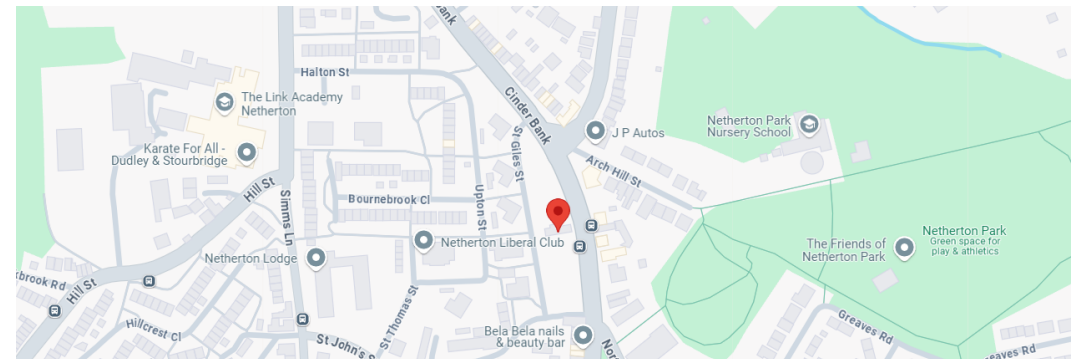
Key information for renters



Halesowen Road, Netherton, Dudley

 DY2 9QA

 £650.00pcm



Page 1: Overview

Pages 2-3: Photos

Page 4: Map & Nearby

Page 5: EPC & Floor Plan

Key Facts



Property Type

First-Floor Flat



Bedrooms

1

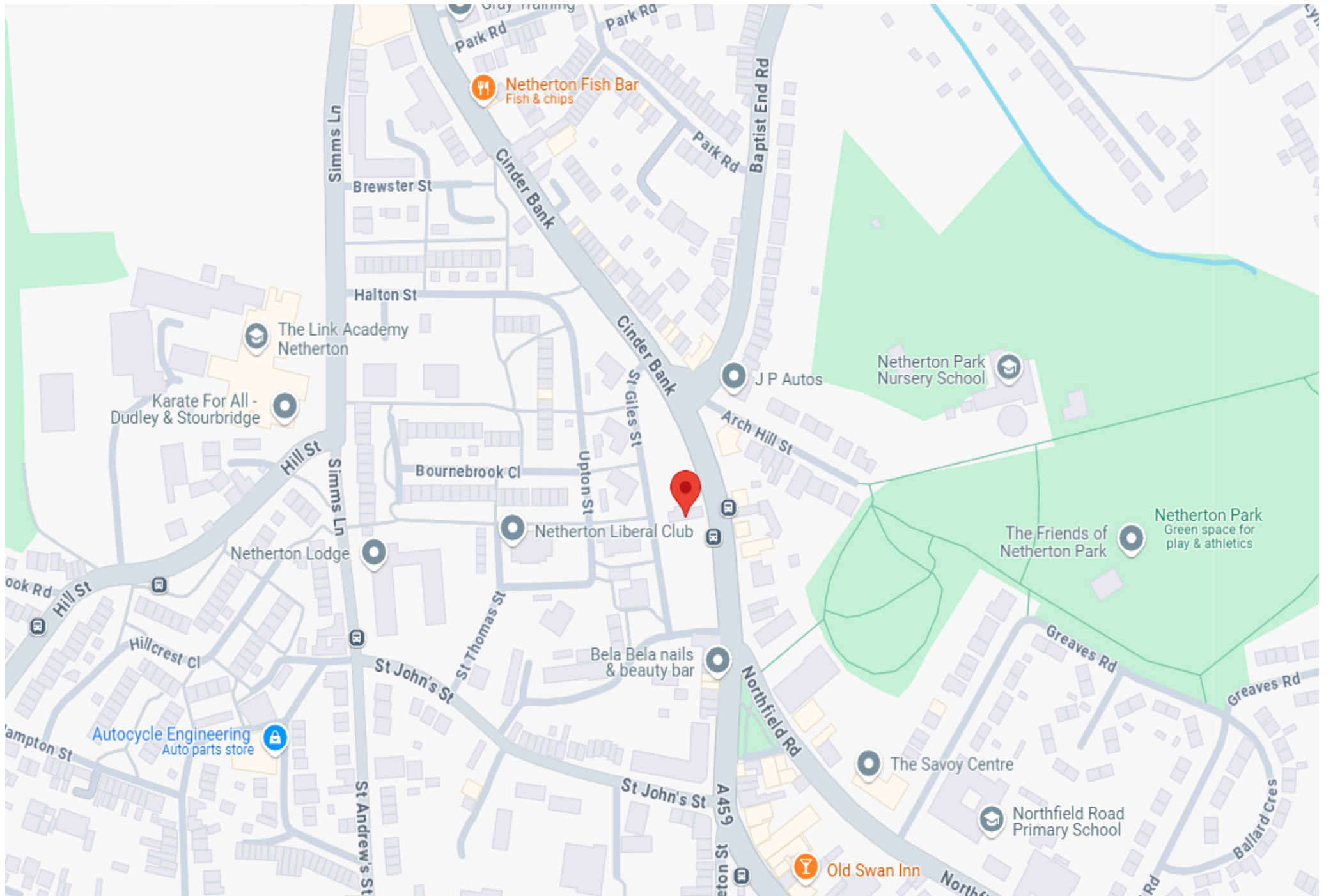


Bathrooms

1









Halesowen Road, Dudley, DY2 9QA
(40sq m / 430 sq ft)

Energy rating and score

This property's energy rating is C. It has the potential to be B.

[See how to improve this property's energy efficiency.](#)

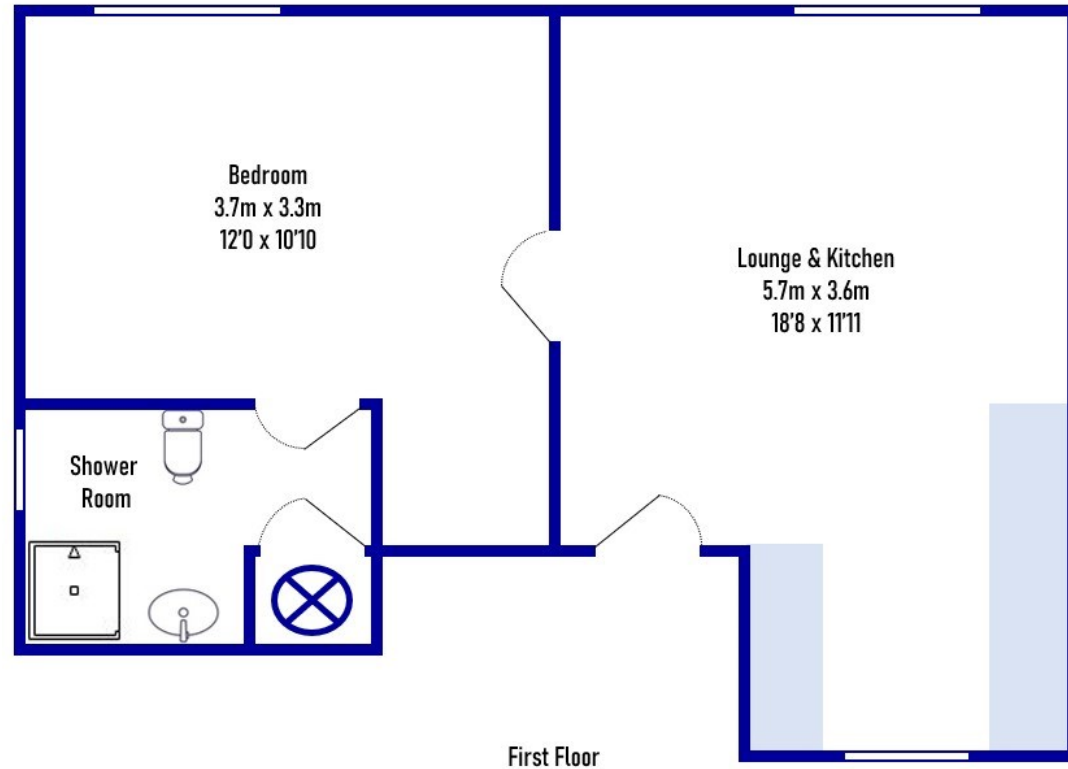
Score	Energy rating	Current	Potential
92+	A		
81-91	B		83 B
69-80	C	71 C	
55-68	D		
39-54	E		
21-38	F		
1-20	G		

The graph shows this property's current and potential energy rating.

Properties get a rating from A (best) to G (worst) and a score. The better the rating and score, the lower your energy bills are likely to be.

For properties in England and Wales:

- the average energy rating is D
- the average energy score is 60



Whilst every attempt has been made by **Complete Property Services** to ensure the accuracy of the floorplan contained here, measurements of doors, windows, rooms and any other items are approximate, and no responsibility is taken for any error, omission or mis-statement. The services, systems and appliances shown have not been tested and no guarantee as to their operability or efficiency can be given.