



36 Hurst Place, Kleinwort Close, Haywards Heath, RH16 4XH

Guide Price £275,000 - £285,000

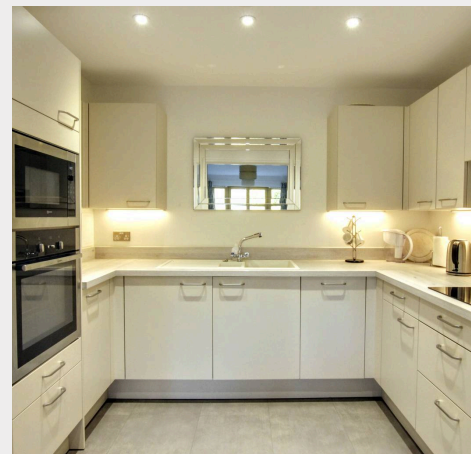


**MANSELL
McTAGGART**
Trusted since 1947



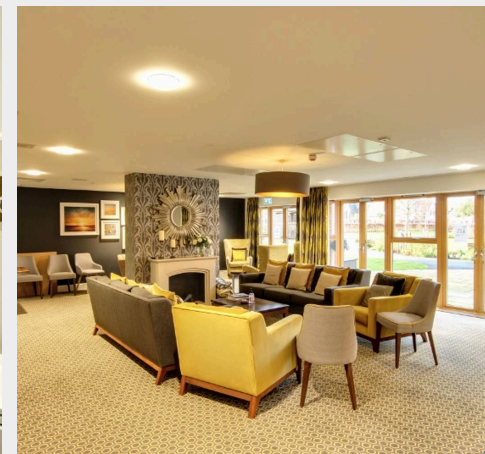
A very spacious first floor retirement apartment of 700 sq ft in this fabulous modern complex on the edge of the town adjoining Beech Hurst Gardens and within a very pleasant stroll to the town centre and shops. The residents enjoy some fantastic facilities including a cafe, lounge, various activities, music/bridge room, a library, a guest flat for family and friends to use, excellent security and reception staff plus 24 hour emergency care line service.

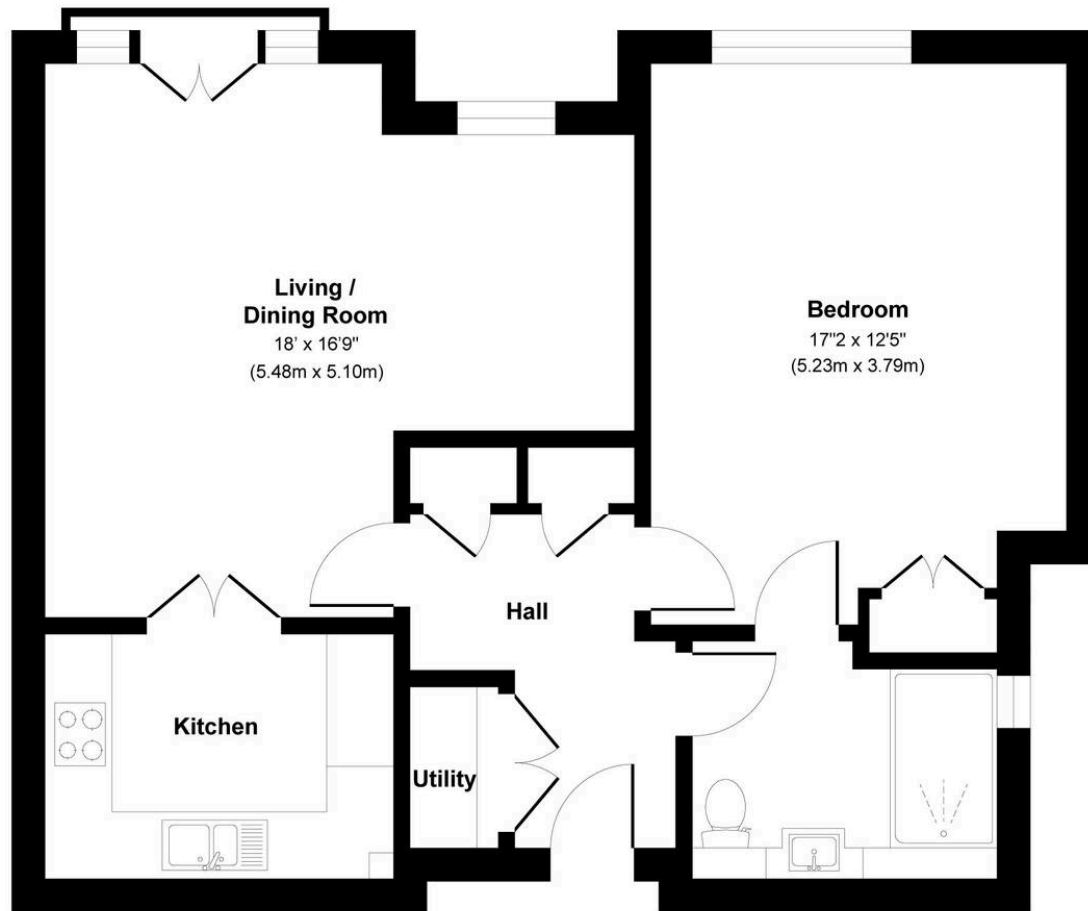
- Substantial first floor retirement apartment with luxury hotel-style facilities
- Adjoining Beech Hurst Gardens & the new Care UK Centre
- Close to countryside and parkland
- Large L-shaped lounge/dining room
- Kitchen with integrated appliances
- Large double bedroom with fitted wardrobes
- Large wet room-style shower room
- EPC rating: B - Council Tax Band: B
- **Tenure:** Leasehold - 125 years from 01.09.2016
- **Ground Rent:** £500 pa - reviewed every 25 years
- **Service Charge:** £586.78 per month
- **Managed** by Anchor Hanover
- **Reception:** 01444 883000



Kleinwort Close forms part of the Anchor Hanover retirement-built Hurst Place complex on the western edge of Haywards Heath town centre close to the borders of Cuckfield village. The complex is located opposite the glorious Paiges Meadow nature reserve and adjoins Beech Hurst Gardens where there is a family restaurant/pub, wonderful gardens with children's play areas, a miniature steam railway, tennis courts and is the home of Haywards Heath lawn bowls club. Countryside is virtually on the doorstep and Paiges Meadow is across the road providing some wonderful country walks. Cuckfield's Village High Street is a 20-30 minute walk to the west where there are numerous shops, boutiques, restaurants, pubs and church. The town's fashionable Broadway with its numerous restaurants, cafés and bars is within easy walk whilst the town centre is as close where there is an extensive range of shops and stores. A regular bus service runs past the entrance to the development linking with the town, station and neighbouring districts. By road, access to the major surrounding areas can be swiftly gained via the A272 and A/M23 which lies about 4.5 miles to the west at Bolney or Warninglid.

Distances on foot in miles: Dolphin medical practice 0.2 The Broadway restaurants and cafés 0.6 Haywards Heath railway station 0.9 Cuckfield's picturesque village High Street 1.4 Brighton seafront 14 & Gatwick Airport 14





Approximate Gross Internal Floor Area 733 sq. ft / 68.1 sq. m

Illustration for identification purpose only, measurements approximate and not to scale, unauthorized reproduction is prohibited.

Mansell McTaggart Haywards Heath

Mansell McTaggart Estate Agents, 7 Muster Green South - RH16 4AP

01444 456431

hh@mansellmctaggart.co.uk

www.mansellmctaggart.co.uk/branch/haywardsheath

Consumer Protection from Unfair Trading Regulations 2008 We have not tested any apparatus, equipment, fixtures, fittings or services and so cannot verify that they are in working order or fit for purpose. You are advised to obtain verification from your solicitor or surveyor. References to the tenure of a property are based on information supplied by the seller. We have not had sight of the title documents and a buyer is advised to obtain verification from their solicitor. Items shown in photographs are not included unless specifically mentioned within the sales particulars, but may be available by separate negotiation.