

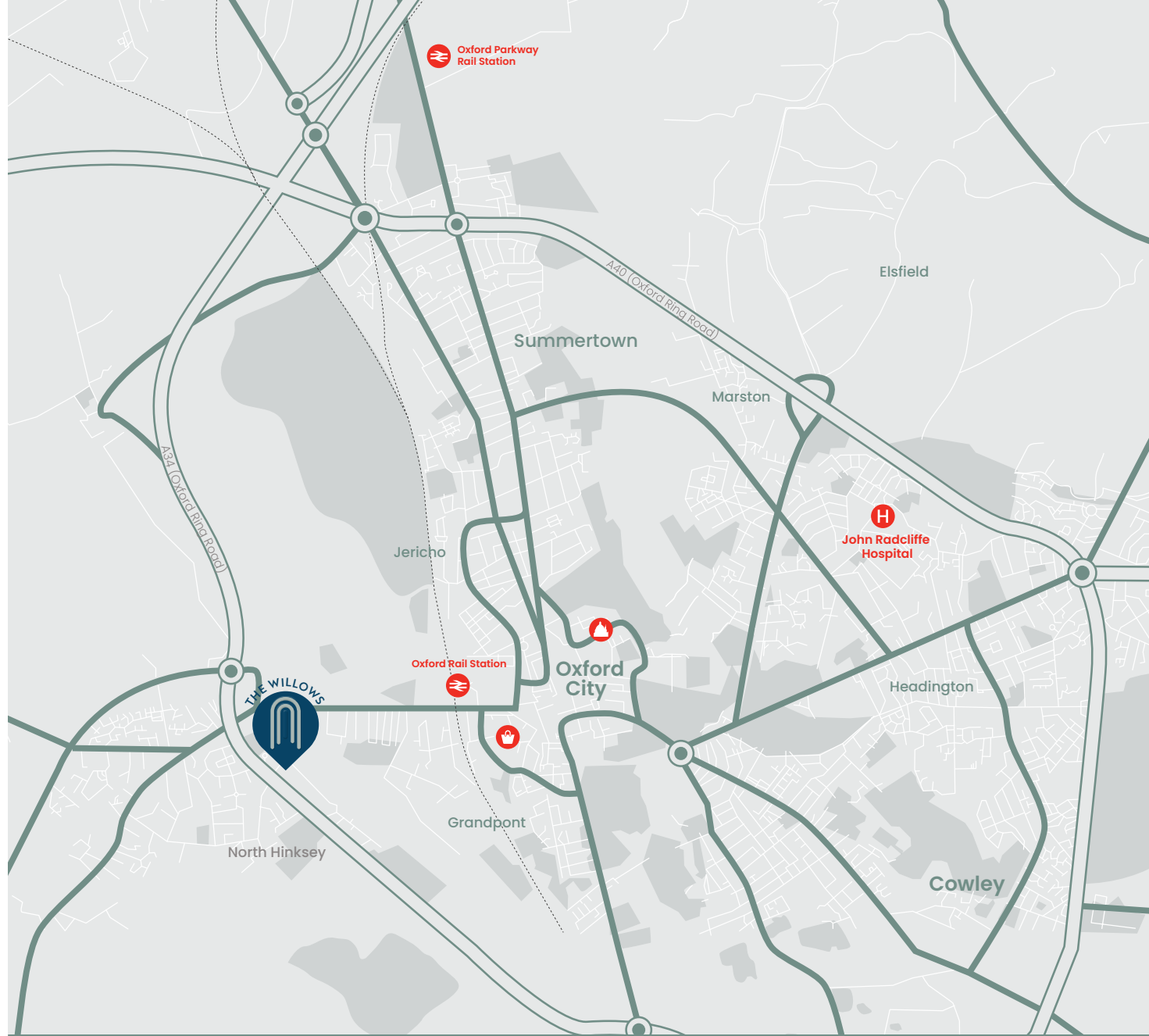
The
Willows



Welcome Home



The Willows is a bespoke collection of seven luxury apartments located less than 2 miles from Oxford's historic centre. Discover the perfect blend of elegance, convenience, and tranquillity in our thoughtfully crafted homes.



The convenience of living at The Willows extends beyond its proximity to Oxford's vibrant city centre. With excellent transport connections by both rail and road, commuting to major cities like London and Birmingham becomes effortless. You can enjoy the best of both worlds - the tranquillity of suburban living combined with easy access to urban amenities.

Each apartment is meticulously designed to provide an unparalleled living experience. From the moment you step inside, you are greeted by luxurious interiors and modern amenities that cater to your every need. Whether you are looking for a spacious one-bedroom or two-bedroom apartment, our diverse range of layouts provides options for everyone.

The specification of The Willows is of high quality throughout, with every kitchen featuring Quartz worktops and fully integrated Bosch appliances. MVHR ventilation systems are installed providing clean air to the homes and underfloor floor heating is delivered from air source heat pumps, ensuring that these apartments are not only beautiful but also efficient. Outside there is private off-street parking, a bike store and a landscaped communal area. Some apartments also include a private garden.



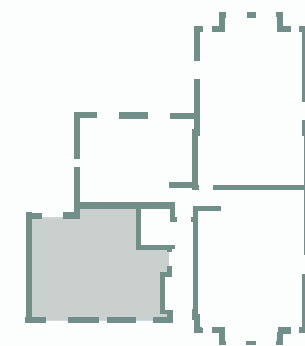
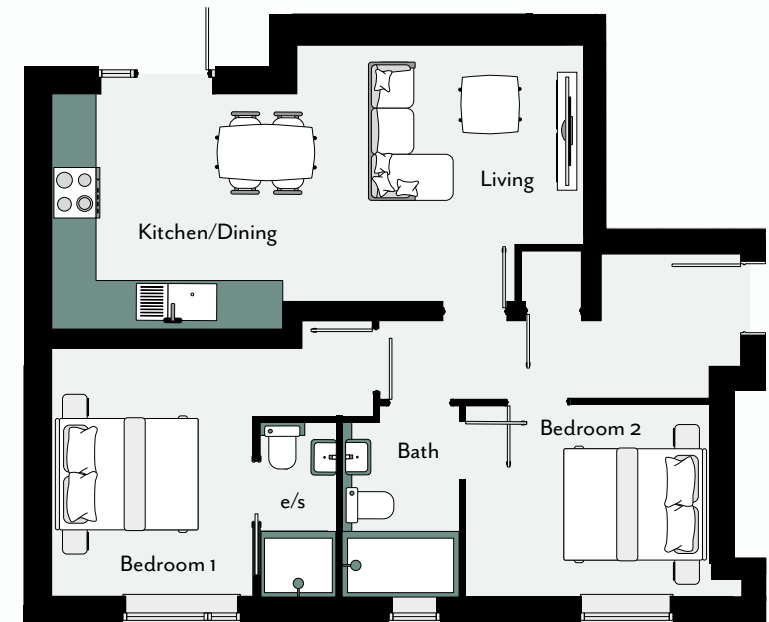
Ground Floor

FLOOR PLANS

LAYOUT & SIZES

APARTMENT ONE

61.6 sq. m. / 663 sq. ft.

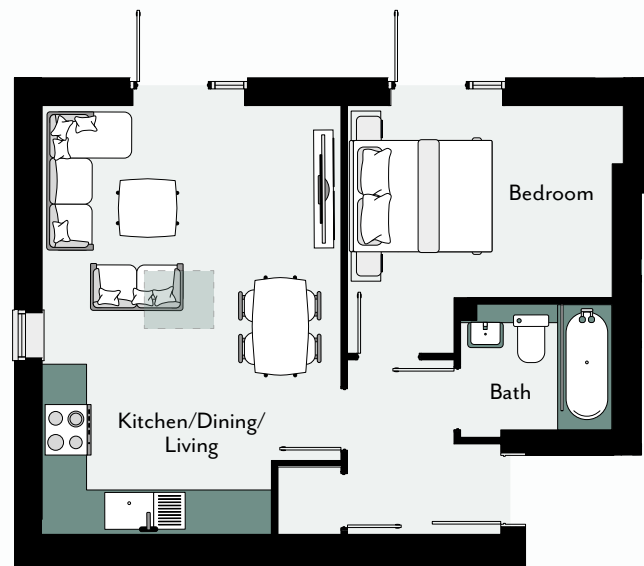


The Willows 

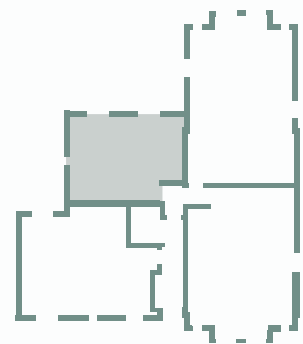


APARTMENT TWO

43.4 sq. m. / 467 sq. ft.

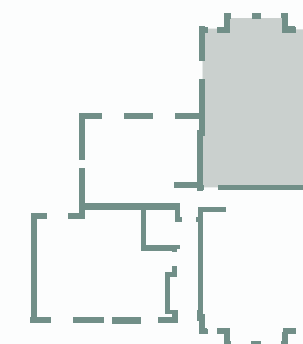
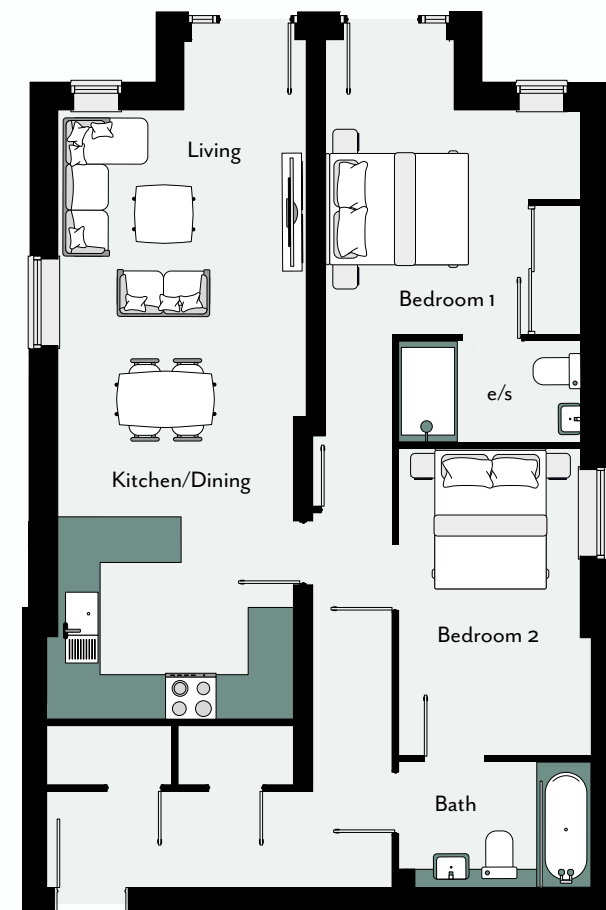


■ Skylight



APARTMENT THREE

79.4 sq. m. / 854 sq. ft.

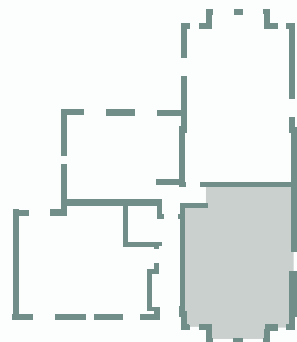
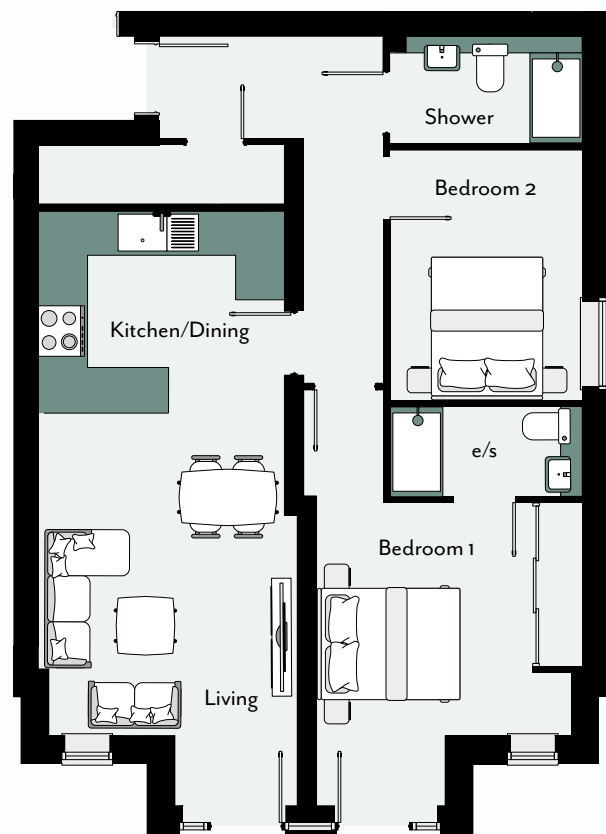


The Willows



APARTMENT FOUR

70.6 sq. m. / 760 sq. ft.



First Floor

FLOOR PLANS
LAYOUT & SIZES

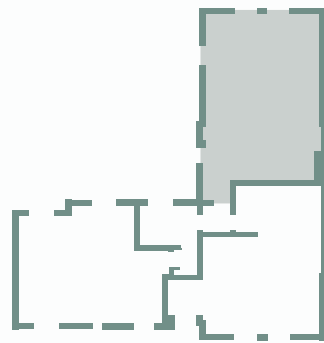
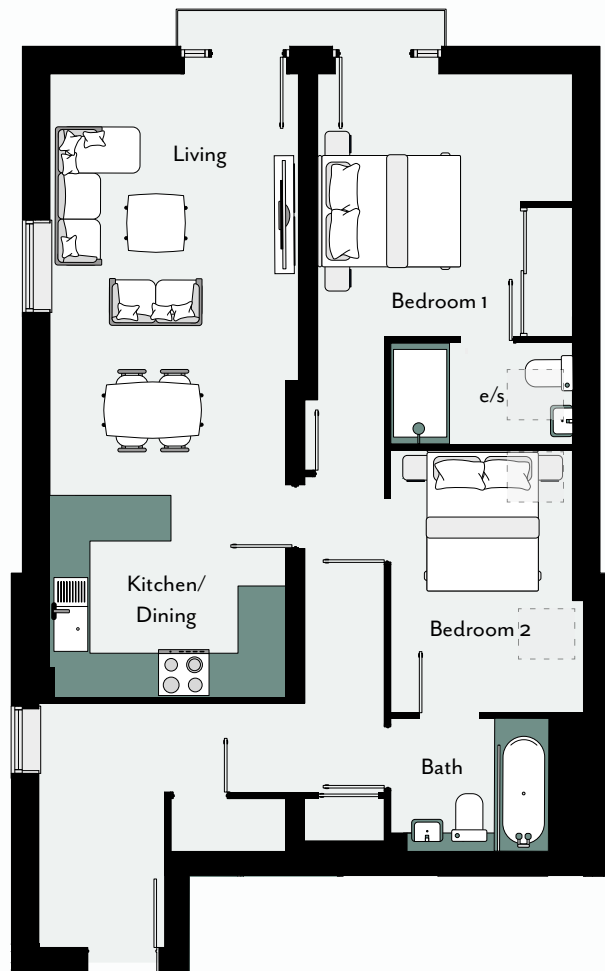
The Willows 



APARTMENT 2 - BEDROOM 1
COMPUTER GENERATED IMAGE

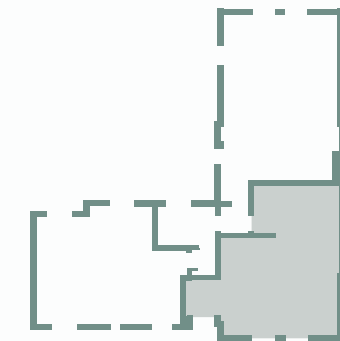
APARTMENT FIVE

78.1 sq. m. / 841 sq. ft.



APARTMENT SIX

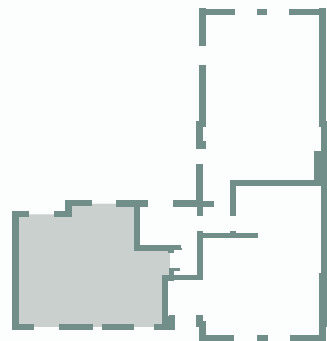
67.9 sq. m. / 731 sq. ft.





APARTMENT SEVEN

61.6 sq. m. / 663 sq. ft.



The Willows



EXTERNAL - REAR
COMPUTER GENERATED IMAGE

Specification



KITCHENS:

- » Contemporary kitchen
- » Quartz worktops
- » Breakfast bars
(Apartments 3, 4, 5, 6 only)
- » Bosch oven and dishwasher
- » Bosch integrated fridge/freezer
- » Bosch induction hob
- » Integrated washing machine
(Apartments 1,2,7 only)

HEATING:

- » High energy efficiency, air source heat pump
- » Underfloor heating throughout

GENERAL FITTINGS & QUALITY OF BUILD:

- » Double-glazed thermally efficient windows
- » Modern steel and glass staircase
- » Built in bedroom wardrobes, providing full height mirrored doors (Apartments 3,4,5,6 only)
- » Luxury modern laminate flooring to kitchen and hallway
- » Carpet to bedrooms
- » Ample electrical sockets

ELECTRICAL:

- » TV/FM/Satellite points
- » Low energy LED lighting throughout
- » MVHR ventilation system for clean air throughout apartment

BATHROOMS:

- » Heated ladder towel radiators
- » Large format Italian porcelain tiles to walls and floors
- » Stylish shower units with thermostatic controls
- » Hansgrohe brassware throughout bathrooms
- » High quality white sanitary ware with concealed systems
- » Basin with wall-hung vanity drawers
- » Quartz shelves throughout
- » Bath shower mixers and filler taps

SECURITY:

- » Smoke and fire alarms hardwired with mains back up
- » Highly secure 'PAS 24' compliant window and door locks

EXTERNAL:

- » Landscaped amenity space
- » External lighting
- » Off street private parking
- » Individual patios to ground floor apartments
- » Bin store
- » Cycle store

PEACE OF MIND:

- » 10-year ICW new build warranty
- » Building Regulations Compliance Certificate

OWNERSHIP:

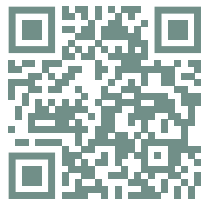
- » Share of freehold
- » 999 year lease, £nil ground rent
- » Annual management charge

VIEWINGS BY APPOINTMENT

Twining House
294 Banbury Road
Summertown, Oxford
OX2 7ED

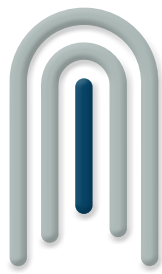
t: 01865 261222
e: newhomes@breckon.co.uk

SCAN QR CODE TO LEARN MORE!
[BRECKON.CO.UK/THEWILLOWS](https://breckon.co.uk/thewillows)



PLEASE NOTE: Whilst the details contained within this brochure have been prepared with all due care for the convenience of the intending purchaser, the information provided is a guide and for information purposes only, and as such their accuracy cannot be guaranteed. They do not in whole or in part constitute or form part of any offer or contract. Any text, images or plans are for guidance only, and should not be considered as comprehensive. Any areas, measurements or distances given are approximate and Breckon & Breckon take no responsibility for any error or omission. Layouts and fixtures shown may vary and should not be used for fitting carpets, curtains, furniture or appliances. Any furniture illustrated is for guidance only and is not included with the property. The floor plans depict typical layouts and are not to scale. Cupboards in some properties may vary. Breckon & Breckon cannot confirm the working condition of any services, appliances or facilities associated to the property, nor can we confirm the condition of the property as a whole - any purchasers should seek verification through their survey or solicitor. Some of the photography contained within the brochure are images of the surrounding local areas and virtually staged images of the interiors.





WATCH THE FILM

[BRECKON.CO.UK/THEWILLOWS](https://breckon.co.uk/thewillows)