



# Endmoor, Darley

Harrogate

Guide Price **£450,000**



# MYRINGS





## Endmoor

Darley, Harrogate

NO CHAIN - SOUTH FACING GARDEN - OPEN COUNTRYSIDE VIEWS - LARGE INTEGRAL GARAGE - DESIRABLE VILLAGE LOCATION - VILLAGE STORE 10 MINUTES WALK - HARROGATE 13 MINUTES DRIVE - BUS STOP 1 MINUTE WALK.

Council Tax band: F

Tenure: Freehold

- NO CHAIN
- SOUTH FACING GARDEN
- OPEN COUNTRYSIDE VIEWS
- LARGE INTEGRAL GARAGE
- DESIRABLE VILLAGE LOCATION
- VILLAGE STORE 10 MINUTES WALK
- HARROGATE 13 MINUTES DRIVE
- BUS STOP 1 MINUTE WALK



MYRINGS







# Endmoor, Darley, Harrogate, HG3

Approximate Area = 1325 sq ft / 123 sq m

Limited Use Area(s) = 776 sq ft / 72 sq m

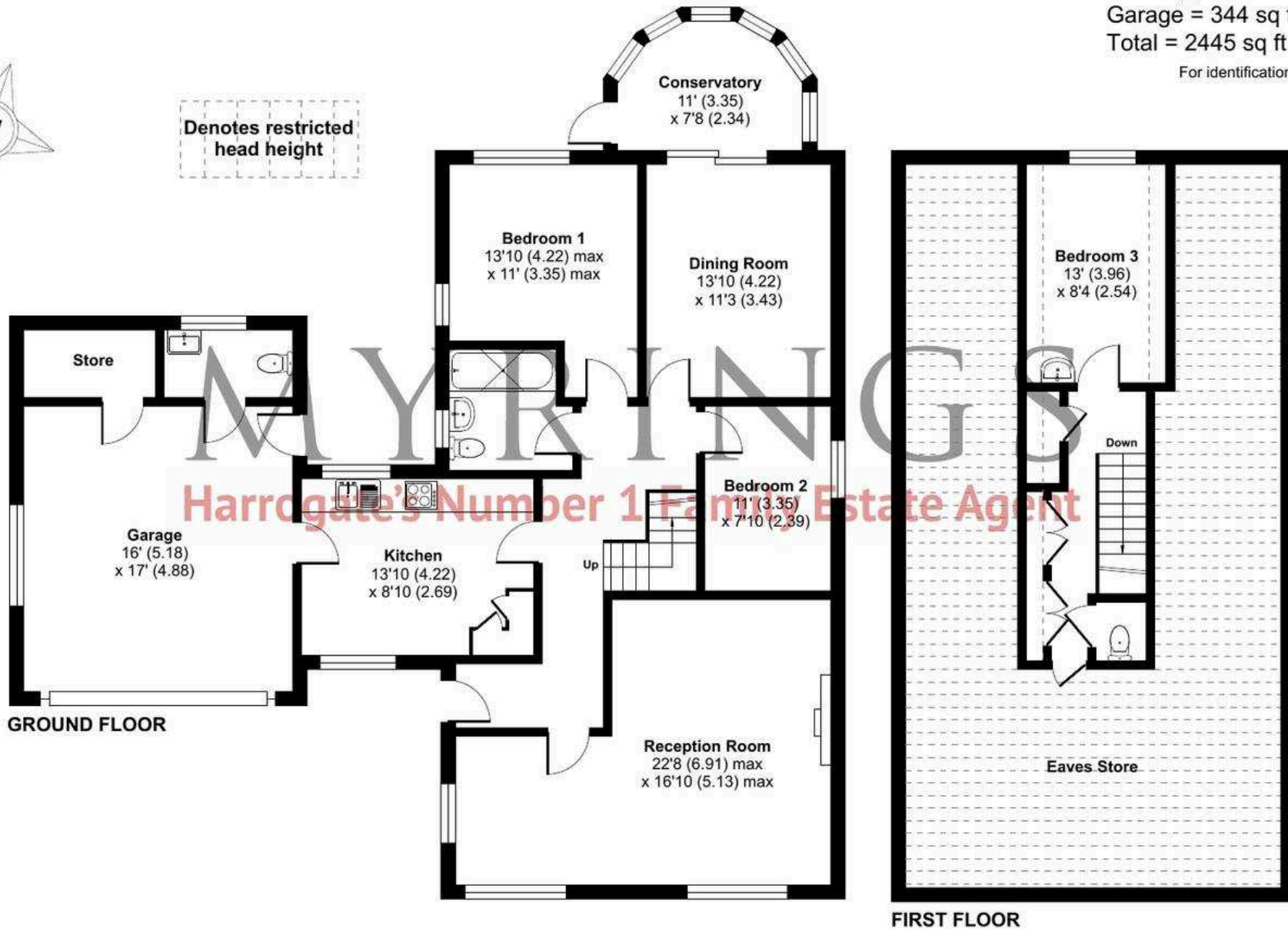
Garage = 344 sq ft / 31.9 sq m

Total = 2445 sq ft / 226.9 sq m

For identification only - Not to scale



Denotes restricted head height











## Myrings Estate Agents

Myrings Estate Agents Ltd, 10 Princes Square - HG1 1LX

01423

566400

▪ [enquiries@myringsestateagents.com](mailto:enquiries@myringsestateagents.com) ▪ <http://myringsestateagents.com/>

