



Oakleigh St. Martins Avenue, Epsom

In Excess of £425,000



Oakleigh St. Martins Avenue

Epsom

Luxurious top-floor apartment in sought-after location. Stylish living space with high-quality finishes, modern kitchen, South West-facing balcony, two bedrooms, spa shower room, underfloor heating, garage. Ideal for professionals or downsizers. Close to town centre and transport links. Contact us to view.

Council Tax band: D

Tenure: Share of Freehold

EPC Energy Efficiency Rating: C

EPC Environmental Impact Rating: D

- Top Floor Apartment
- Beautifully Presented
- Mood Lighting Throughout
- South West Facing Balcony
- Spacious Reception Room
- Modern Kitchen/Breakfast Room
- Two Bedrooms
- Ballnese Spa Shower Room With Underfloor Heating
- Garage In Block
- Allocated Parking



Situated in a sought-after location, this exquisite top-floor apartment offers a luxurious and contemporary living space perfect for stylish urban living.

Upon entering the property, you are greeted by a beautifully presented interior with high-quality finishes throughout. The spacious reception room provides an inviting atmosphere that effortlessly sets the tone for a cosy evening or a social gathering. The modern kitchen/breakfast room boasts sleek cabinetry, integrated appliances, and ample counter space for meal preparation. Whilst the South West-facing balcony, which extends from the living space, offers a perfect spot to enjoy the sunshine throughout the day.

In addition the property boasts two well-appointed bedrooms and a contemporary Balinese spa shower room with underfloor heating, providing a luxurious and tranquil space to relax and rejuvenate.

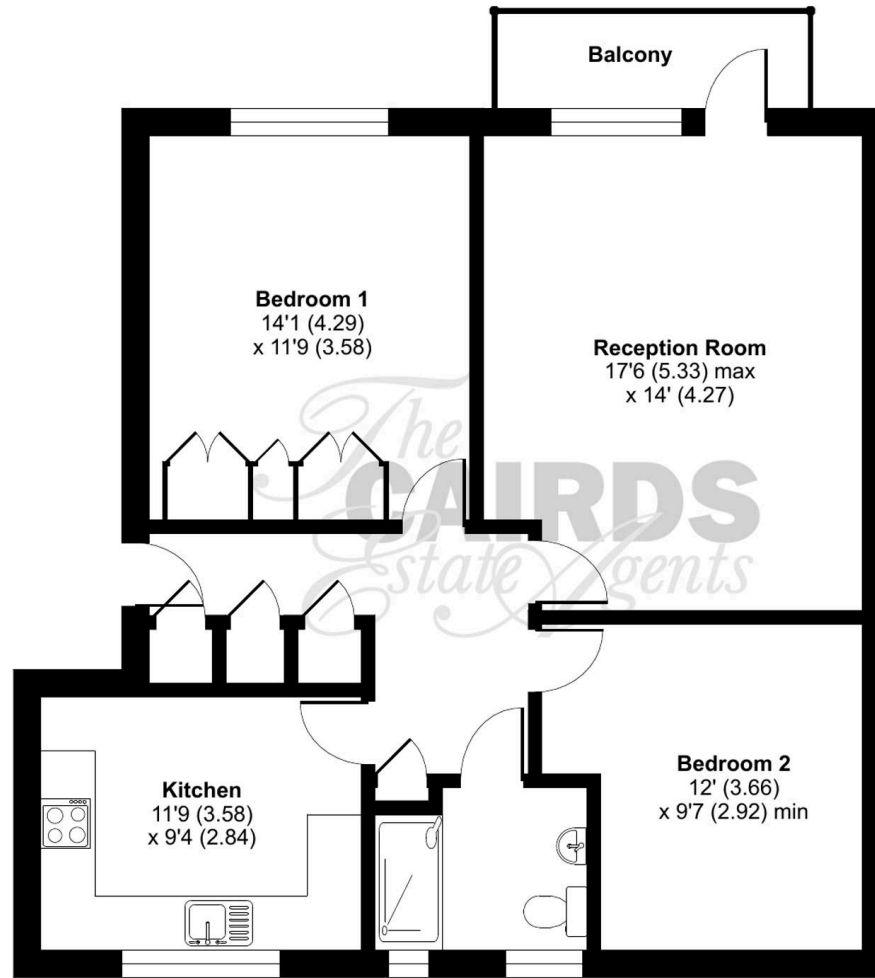
Completing this exceptional property is a garage in block and allocated parking space, providing convenient and secure parking for residents.

Located in a prime area, this two-bedroom flat offers a sophisticated and stylish lifestyle within a short walk of the town centre, station and transport links. Whether you are a professional couple, a young family, or a downsizer, this apartment is sure to impress.

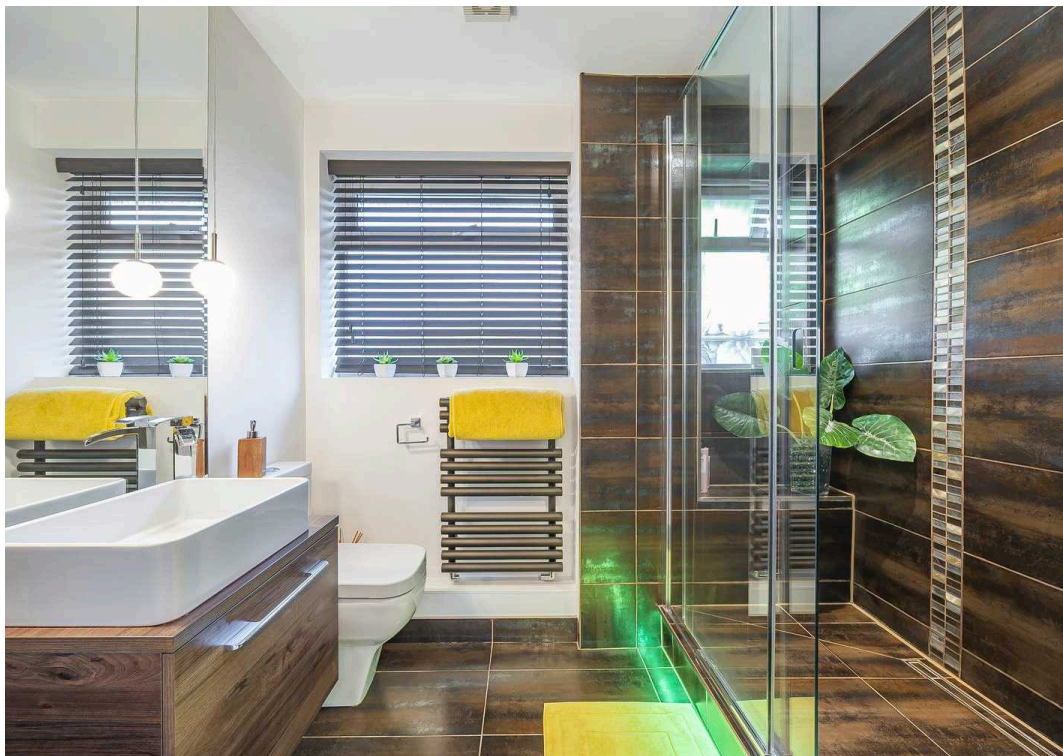
Oakleigh, St. Martins Avenue, Epsom, KT18

Approximate Area = 827 sq ft / 76.8 sq m

For identification only - Not to scale



SECOND FLOOR





Cairds The Estate Agents

Cairds The Estate Agents, 128-130 High Street - KT19 8BT

01372 743033 • homes@cairds.co.uk • www.cairds.co.uk