



PUTTERILLS

est. 1992



Guide Price £425,000
Waterlow Mews Little
Wymondley, SG4 7HL

PROPERTY SUMMARY

This three-bedroom terraced home offers spacious accommodation, which includes an entrance hall, a generous sitting room, and a kitchen/dining room. On the first floor, there are three bedrooms, with bedroom one featuring an en-suite shower room, and there is a family bathroom.

Externally, the property offers a garden providing a good degree of privacy, allocated parking, and a garage. There is also visitor parking available. We have been advised that both the boiler and the windows were replaced in 2018. The property is offered for sale with no forward chain.

Little Wymondley benefits from two pubs nearby, and there are comprehensive shopping and recreational facilities together with excellent schooling and train stations in nearby Hitchin and Stevenage. The A1(M) is also within easy reach.

3

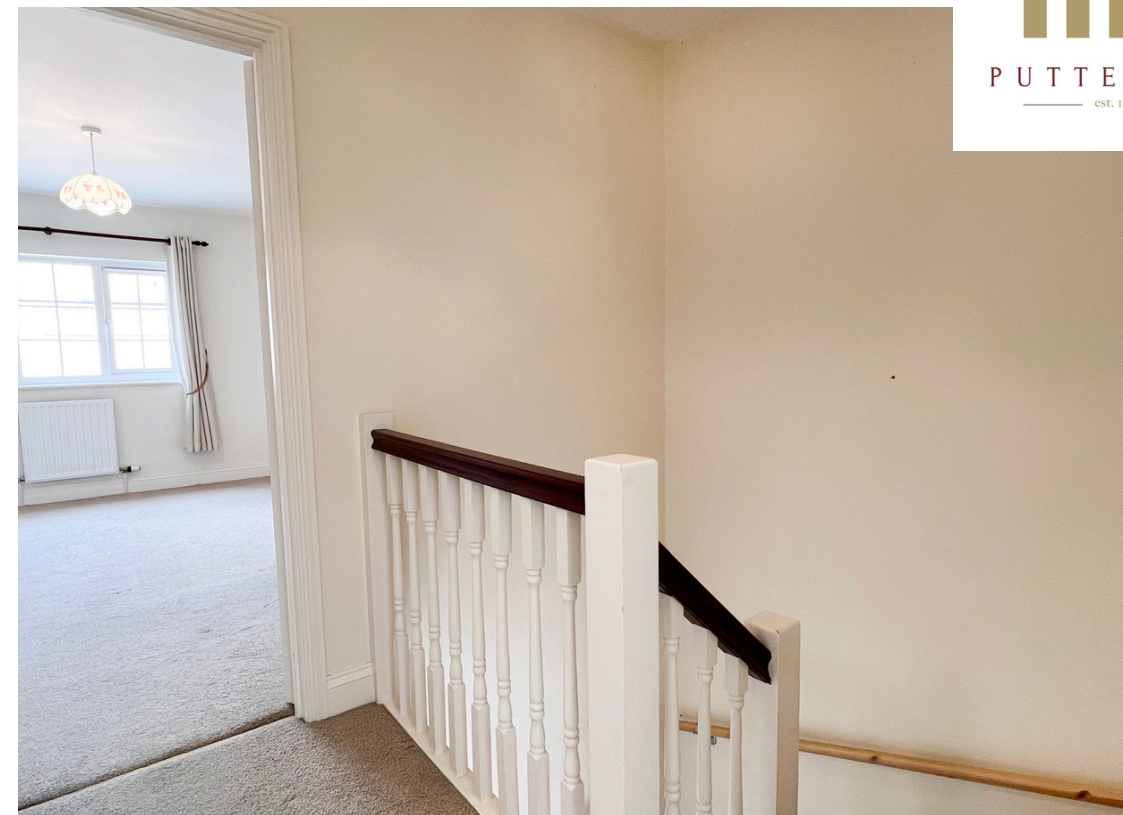


2



1













LOCAL AUTHORITY
North Herts

TENURE
Freehold

COUNCIL TAX BAND
D

VIEWINGS
By prior appointment only

Score	Energy rating	Current	Potential
92+	A		
81-91	B		86 B
69-80	C		
55-68	D	68 D	
39-54	E		
21-38	F		
1-20	G		

Agents Note: Whilst every care has been taken to prepare these particulars, they are for guidance purposes only. All measurements are approximate and are for general guidance purposes only and whilst every care has been taken to ensure their accuracy, they should not be relied upon and potential buyers/tenants are advised to recheck the measurements

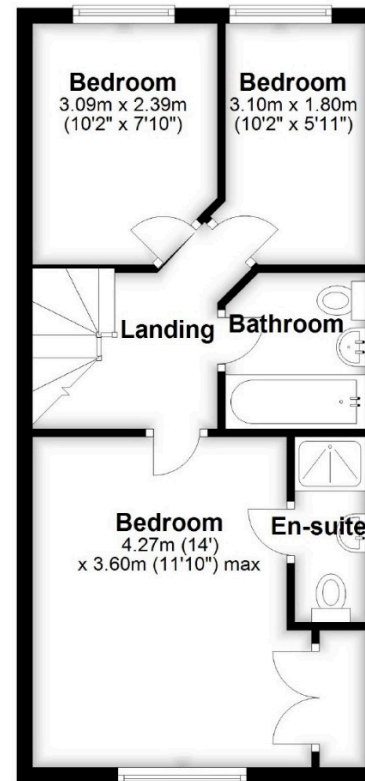
Ground Floor

Approx. 54.7 sq. metres (588.7 sq. feet)



First Floor

Approx. 41.5 sq. metres (446.3 sq. feet)



Total area: approx. 96.2 sq. metres (1035.0 sq. feet)



OFFICE ADDRESS

Putterills Hitchin
60 Hermitage Road
Hitchin
SG5 1DB

CONTACT DETAILS

01462 632222
hitchin@putterills.co.uk
www.putterills.co.uk