



d+j Lettings & Property Management

Nightingale Road Hitchin

£2,500 pcm *Fees apply



- Newly Refurbished
- Spacious and Bright Living Area
- 4 Large Bedrooms
- Off-Road Parking
- Modern En-suite & Family Bathroom
- EPC - D
- Very Close to Train Station
- Available Now!

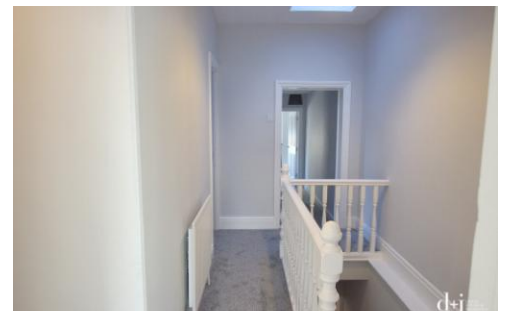


d+j Lettings & Property Management



d+j Lettings & Property Management

tel: 01462 455434 • email: info@djlettings.co.uk • www.djlettings.co.uk



We are delighted to offer this newly refurbished 4 bedroom property to the market. This spacious family home has plenty of character while still having a wealth of modern features. The property provides generous accommodation to include a very bright, large living area, a formal dining room, a stylish fitted kitchen with a pantry and a separate utility area with a downstairs toilet. Upstairs we have 4 very spacious bedrooms, with the master having its own bathroom suite, a large and newly fitted bathroom, an outside courtyard area and an enclosed storage area, coming with one parking space. Available Now!

Viewings: strictly by appointment with dj Lettings, Hitchin office *For details of our fees please visit www.djlettings.co.uk



30 Sun Street, Hitchin
Hertfordshire. SG5 1AH

t: 01462 455434
info@djlettings.co.uk
www.djlettings.co.uk



Free Property Appraisal • Full Management Service • Tenant Find Service • Tenant Reference Checks
Rent & Legal Protection • Safety Regulation Advice • Tenancy Deposit Registration
Client Money Protection • Buy to Let Advice • Estate Management Services