



1 bedroom End Terraced House located in Highwoods.

Guide Price
£160,000

Find us on..



JOHN ALEXANDER
ESTATE AGENTS

15 Kinlett Close Highwoods Colchester CO4 9UE



1



1



0



EPC

D



FULL DESCRIPTION

OVERVIEW

*** GUIDE PRICE OF £160,000 - £190,000 ***

John Alexander is pleased to present this one bedroom end of terraced house nestled in the desirable neighbourhood of Highwoods. This property is ideal for first time buyers or investment and has the benefit from a private garden and a driveway.

Early viewing highly recommended.

THE PROPERTY

Step inside to discover a spacious living area bathed in natural light. The open-plan layout seamlessly connects the living space to the contemporary kitchen which is fully equipped with modern appliances, ample storage, and convenient workspace.

Upstairs, you'll find a comfortable master bedroom, complete with the family bathroom.

Additional benefits of this property include off-street parking and a private garden with lawn, patio and raised desk areas.

Lounge 15' 6" x 13' 6" max (4.72m x 4.11m max)

Kitchen 7' 10" x 5' 10" (2.39m x 1.78m)

First Floor

Landing

Bedroom One 13' 6" x 7' 11" +recess (4.11m x 2.41m +recess)

Bathroom

Parking

Allocated parking for two vehicles.

Don't miss out on the opportunity to make Kinlett Close your new home. Schedule a viewing today to fully appreciate all that this delightful property has to offer!

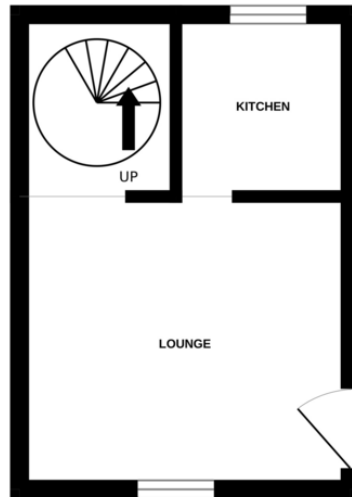
LOCATION

Situated in the highly desirable Highwoods area, just north of Colchester, this stunning one-bedroom corner house offers exceptional access to the A12, making travel a breeze. The neighbourhood boasts a wealth of local amenities, including shops, parks, and dining establishments, creating a perfect environment for relaxed living. With its prime location and welcoming attributes, this home is well-equipped to cater to a diverse range of preferences and lifestyles.

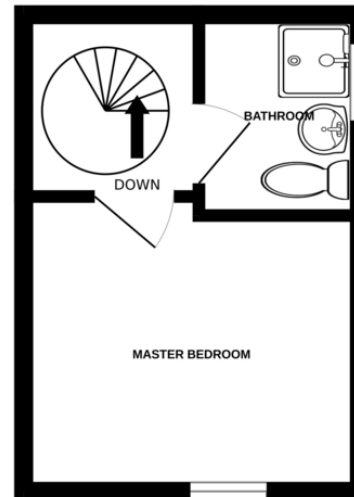


FLOORPLAN

GROUND FLOOR



1ST FLOOR



Whilst every attempt has been made to ensure the accuracy of the floorplan contained here, measurements of doors, windows, rooms and any other items are approximate and no responsibility is taken for any error, omission or mis-statement. This plan is for illustrative purposes only and should be used as such by any prospective purchaser. The services, systems and appliances shown have not been tested and no guarantee as to their operability or efficiency can be given.
Made with Metropix ©2024

DIRECTIONS

CONTACT

**99 London Road
Stanway
Colchester
Essex
CO3 0NY**

E sales@john-alexander.co.uk

T 01206 656007

www.john-alexander.co.uk

Find us on..



JOHN ALEXANDER
ESTATE AGENTS