



Pikes Hill, Epsom

In Excess of £700,000



Pikes Hill

Epsom

Don't miss this rare opportunity to own a Victorian end-of-terrace house that seamlessly blends charm with modern comforts. Enjoy spacious interiors, luxurious amenities, and a convenient location with off-street parking, all within walking distance to the station. Contact us now to view this captivating home!

Council Tax band: D

Tenure: Freehold

EPC Energy Efficiency Rating: D

EPC Environmental Impact Rating: D

- Stunning Victorian Home
- End Terrace Position
- Edge of Town & Walk of Station
- Spacious Lounge with working Fireplace
- Three Bedrooms
- Shaker Cottage Style Fitted Kitchen
- Luxury Upstairs Bathroom
- Victorian Sash Windows with Shutters
- Private Well Maintained Garden with Shed/Hobby Room
- Off Street Parking - Two Cars



This rarely available Victorian end of terrace cottage is located within the sought after College area of Epsom, being just a step from the station and town centre. Accommodation affords spacious living spaces with open fireplace, impressive cottage shaker kitchen, with utility room. Upstairs three bedrooms and luxury appointed bathroom await. Character sash windows with fitted shutters compliment this charming cottage.

In addition the delightful rear garden with office/hobby room and off street parking for two cars adds to the desirability and convenience.

Viewing is highly recommended - Sole agents

Agents Note: The vanity unit in the bathroom has sentimental value and will not be included within the sale. An alternative unit will be installed in its place.

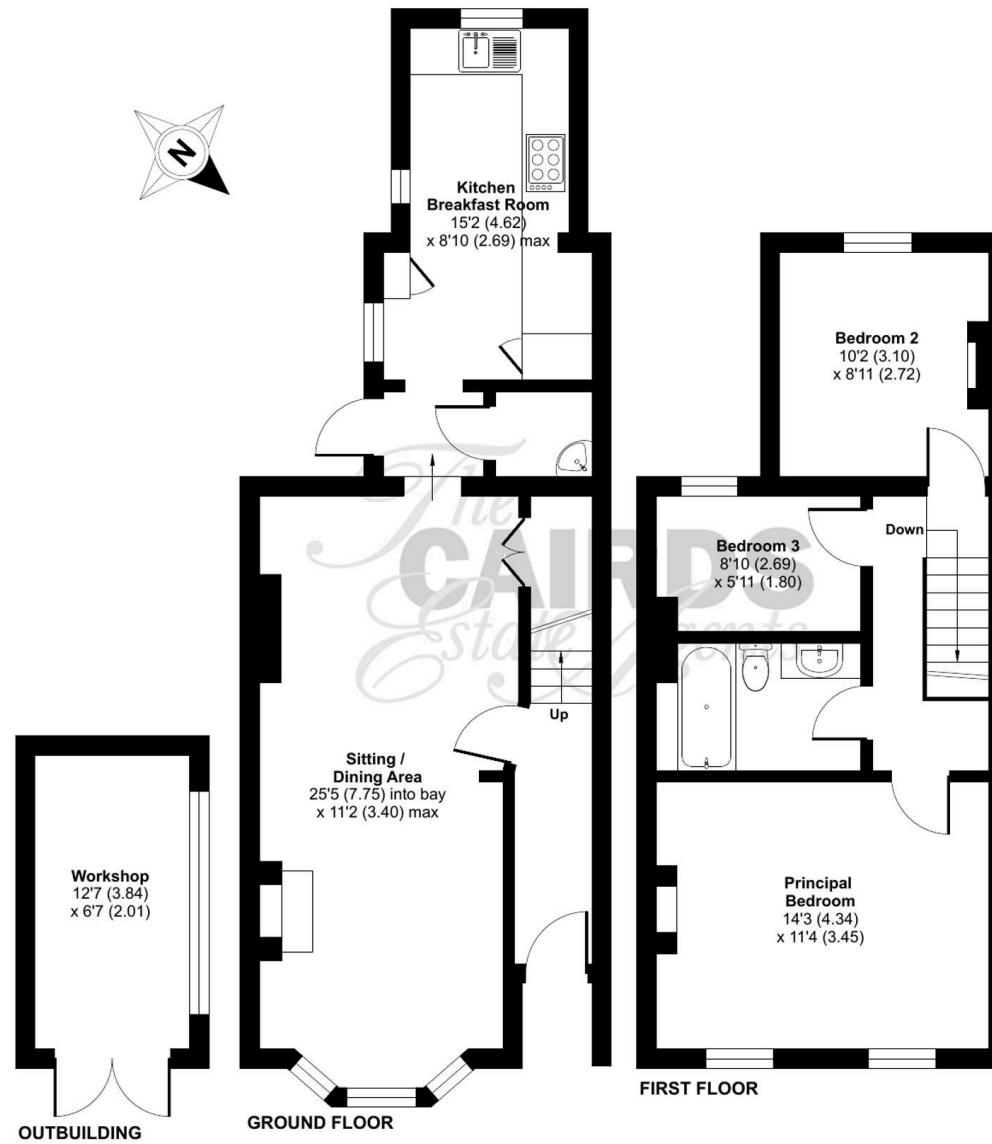
Pikes Hill, Epsom, KT17

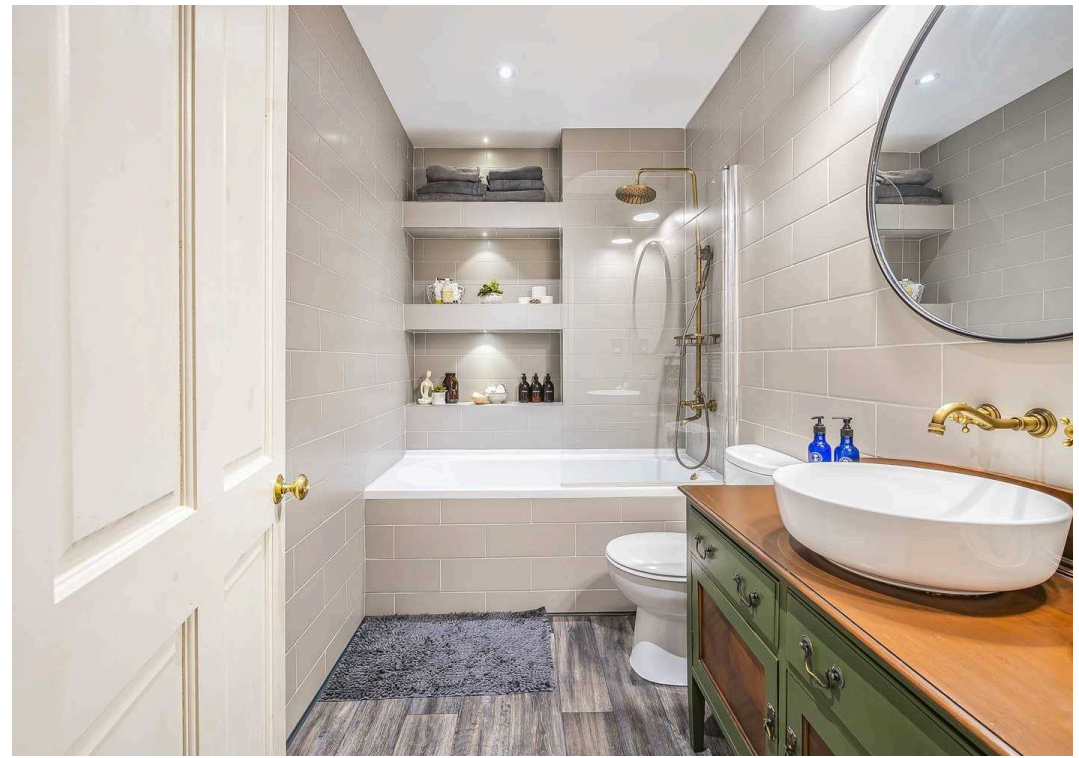
Approximate Area = 933 sq ft / 86.6 sq m

Outbuilding = 84 sq ft / 7.8 sq m

Total = 1017 sq ft / 94.4 sq m

For identification only - Not to scale







Cairds The Estate Agents

Cairds The Estate Agents, 128-130 High Street - KT19 8BT

01372 743033 • homes@cairds.co.uk • www.cairds.co.uk