



45 Galloway Crescent, Broxburn

Offers Over £110,000



45 Galloway Crescent

Broxburn

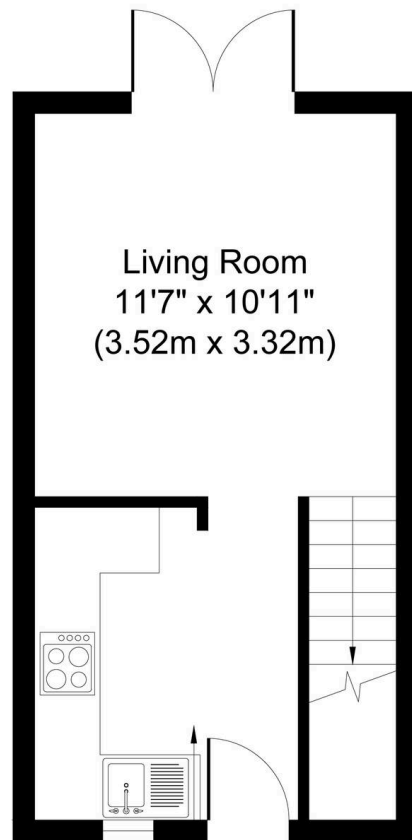
Charming 1-bed terrace house in sought-after area. Ideal for first-time buyers or investors. Features spacious bedroom, modern kitchen, private driveway, and tranquil rear garden. Close to amenities and woodland walks. Perfect for a convenient and relaxing lifestyle.

Council Tax band: B

Tenure: Freehold

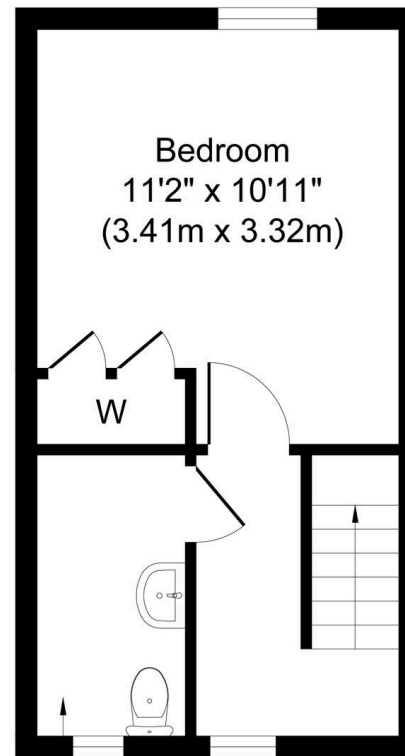
- Lovely One Bedroom Terrace House
- Chain Free Purchase
- Double Bedroom With Built In Storage
- Contemporary Kitchen
- Popular Residential Area
- Close To Woodland Walks
- Private Driveway
- Fully Enclosed Rear Garden
- Close To Amenities





Kitchen
 9'5" x 7'11"
 (2.87m x 2.41m)

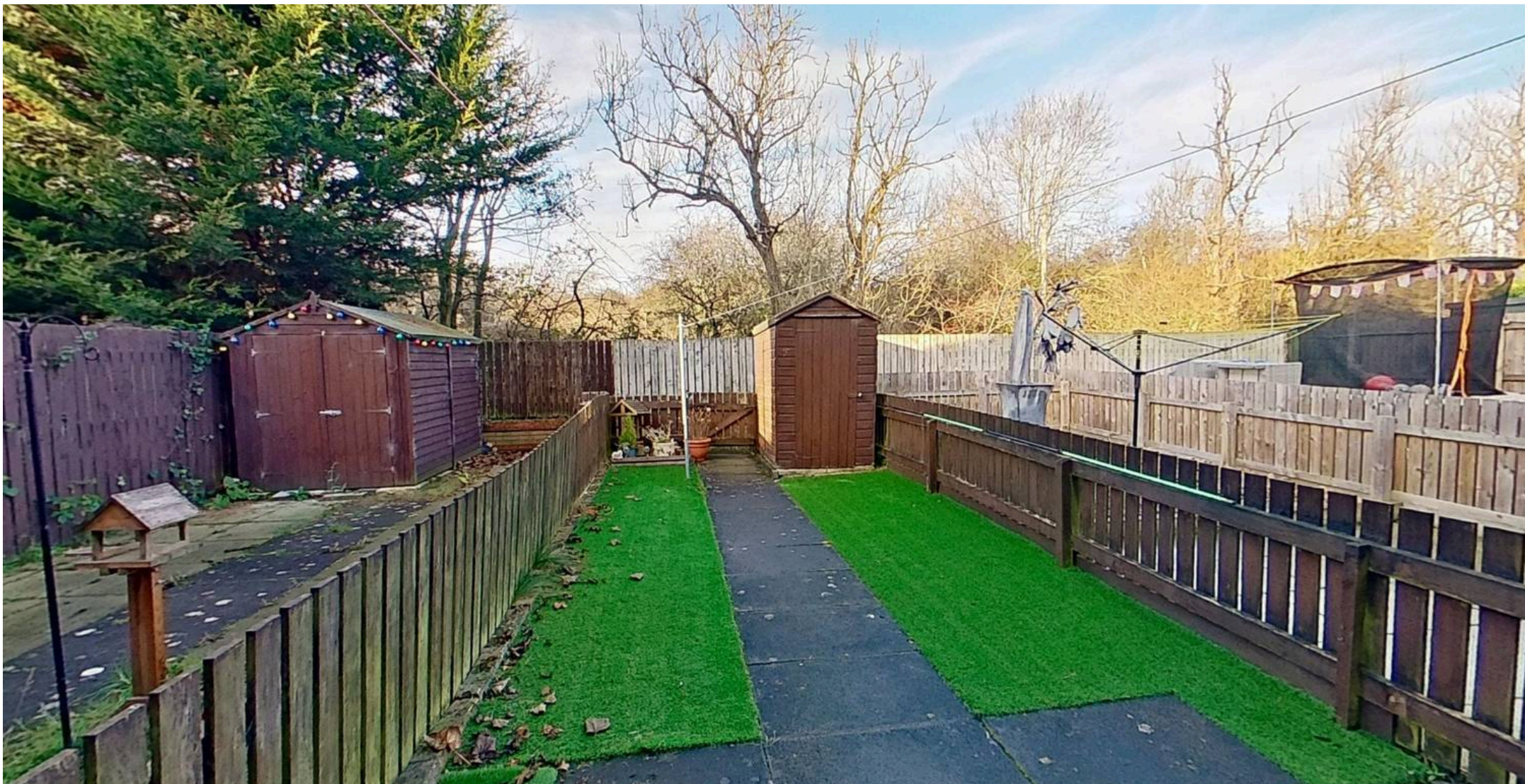
Ground Floor
Approximate Floor Area
232 sq. ft
(21.54 sq. m)



WC
 8'6" x 4'6"
 (2.58m x 1.36m)

First Floor
Approximate Floor Area
232 sq. ft
(21.54 sq. m)

Whilst every attempt has been made to ensure the accuracy of the floor plan contained here, measurements of doors, windows, rooms and any other items are approximate and no responsibility is taken for any error, omission, or mis-statement. The measurements should not be relied upon for valuation, transaction and/or funding purposes. This plan is for illustrative purposes only and should be used as such by any prospective purchaser or tenant. The services, systems and appliances shown have not been tested and no guarantee as to their operability or efficiency can be given.



KnightBain Estate Agents

Knightbain, 4 Greendykes Road, Broxburn - EH52 5AG

01506 852000

info@knightbain.co.uk

www.knightbain.co.uk/

