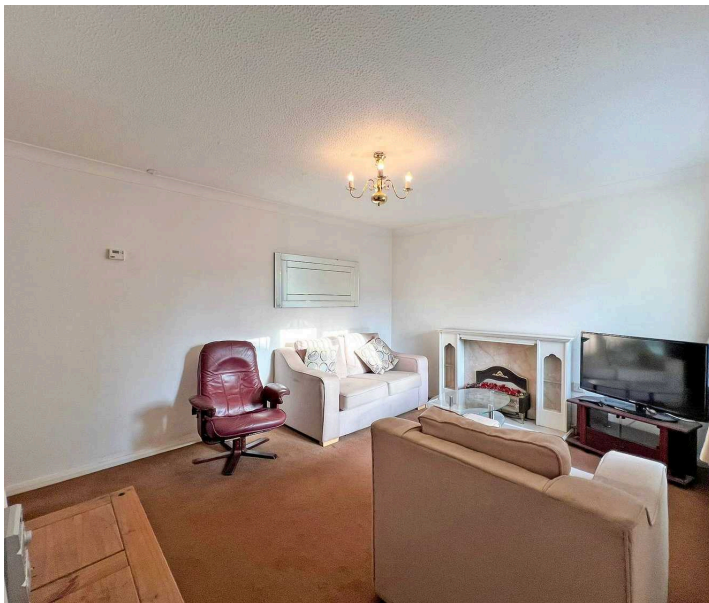




Bartlams.

27 Hanover Court, Wolverhampton - WV6 8QL

Fixed Price **£70,000**



27 Hanover Court

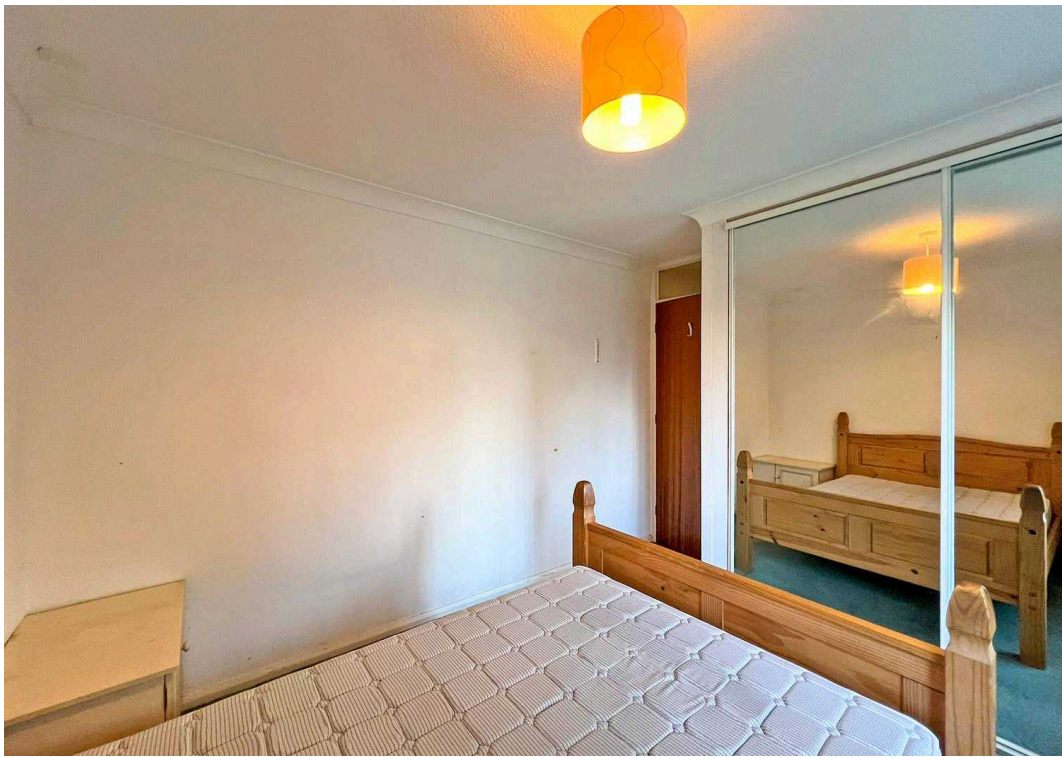
Wolverhampton, Wolverhampton

Offered with NO UPWARD CHAIN

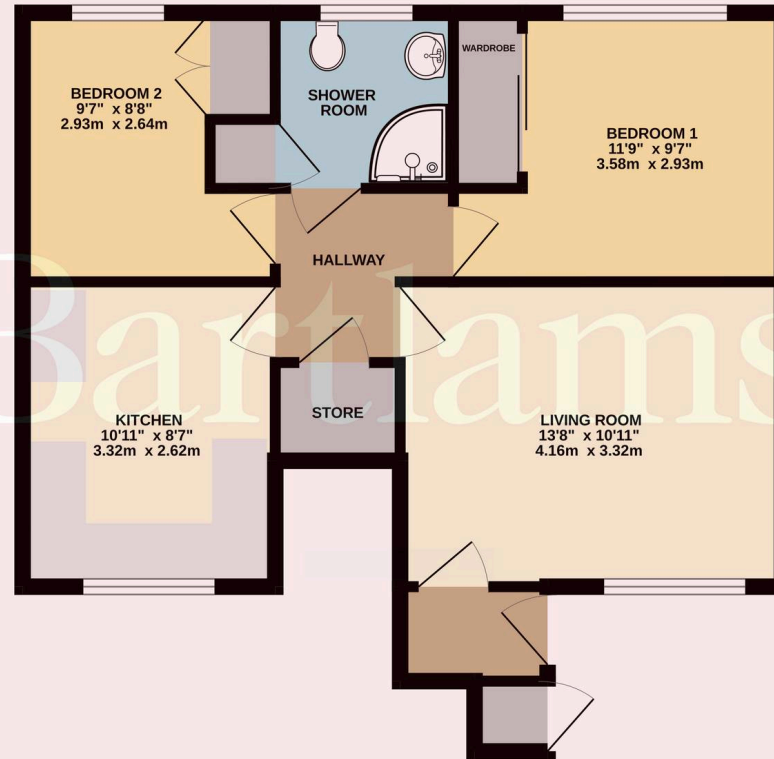
Ground floor apartment within a small, popular retirement complex, conveniently situated near the amenities of Tettenhall Village. This compact, low-maintenance property features: an entrance lobby, a living room with a charming fireplace, an inner hall, a well-fitted kitchen, two bedrooms (the larger with built-in wardrobes), and a shower room. Benefits include gas central heating, double-glazed windows, and access to communal gardens with parking facilities. Occupancy is restricted to those aged 60 and over. LEASEHOLD with a service charge applicable.

- GROUND FLOOR APARTMENT
- TWO BEDROOMS
- WALKING DISTANCE TO TETTENHALL VILLAGE
- COMMUNAL PARKING
- CENTRAL HEATING & DOUBLE GLAZING
- 87 YEARS REMAINING ON LEASE
- £204.34 SERVICE CHARGE MONTHLY
- OVER 60's RETIREMENT COMPLEX

B.



GROUND FLOOR



Whilst every attempt has been made to ensure the accuracy of the floorplan contained here, measurements of doors, windows, rooms and any other items are approximate and no responsibility is taken for any error, omission or mis-statement. This plan is for illustrative purposes only and should be used as such by any prospective purchaser. The services, systems and appliances shown have not been tested and no guarantee as to their operability or efficiency can be given.
Made with Metropia ©2024

Bartlams Tettenhall

Bartlams, 24 High Street - WV6 8QT

01902 759888

tettenhall@bartlams.co.uk

www.bartlams.co.uk/

NOTICE: These particulars, although believed to be correct, do not constitute any part of an offer or contract. All statements contained in these particulars as to this property are made without responsibility and are not to be relied upon as statements or representations of warranty whatsoever in relation to property. Any intending purchaser must satisfy themselves by inspection or otherwise as to the correctness each of the statements contained in these particulars. All measurements are approximate and for illustrative purposes only. Photographs are produced for general information and it must not be inferred that any item shown is included in the sale. DISCLOSURE: As a professional Estate Agency our clients employ us to look after their best interests. This includes providing them with full details of offers made to purchase their property. To ensure our obligations to our clients are met we need to check the status of all potential purchasers. If you make an offer on this property we will ask a member of The Finance Family to contact you to verify your status. They are a leading firm of Independent Financial Advisers and Mortgage Brokers. Should they transact any business resulting from our introduction then we may receive a commission.

