



## 11 Marlowe Court Parkleys, Richmond

Offers Over £525,000

# 11 Marlowe Court Parkleys

Richmond, Richmond

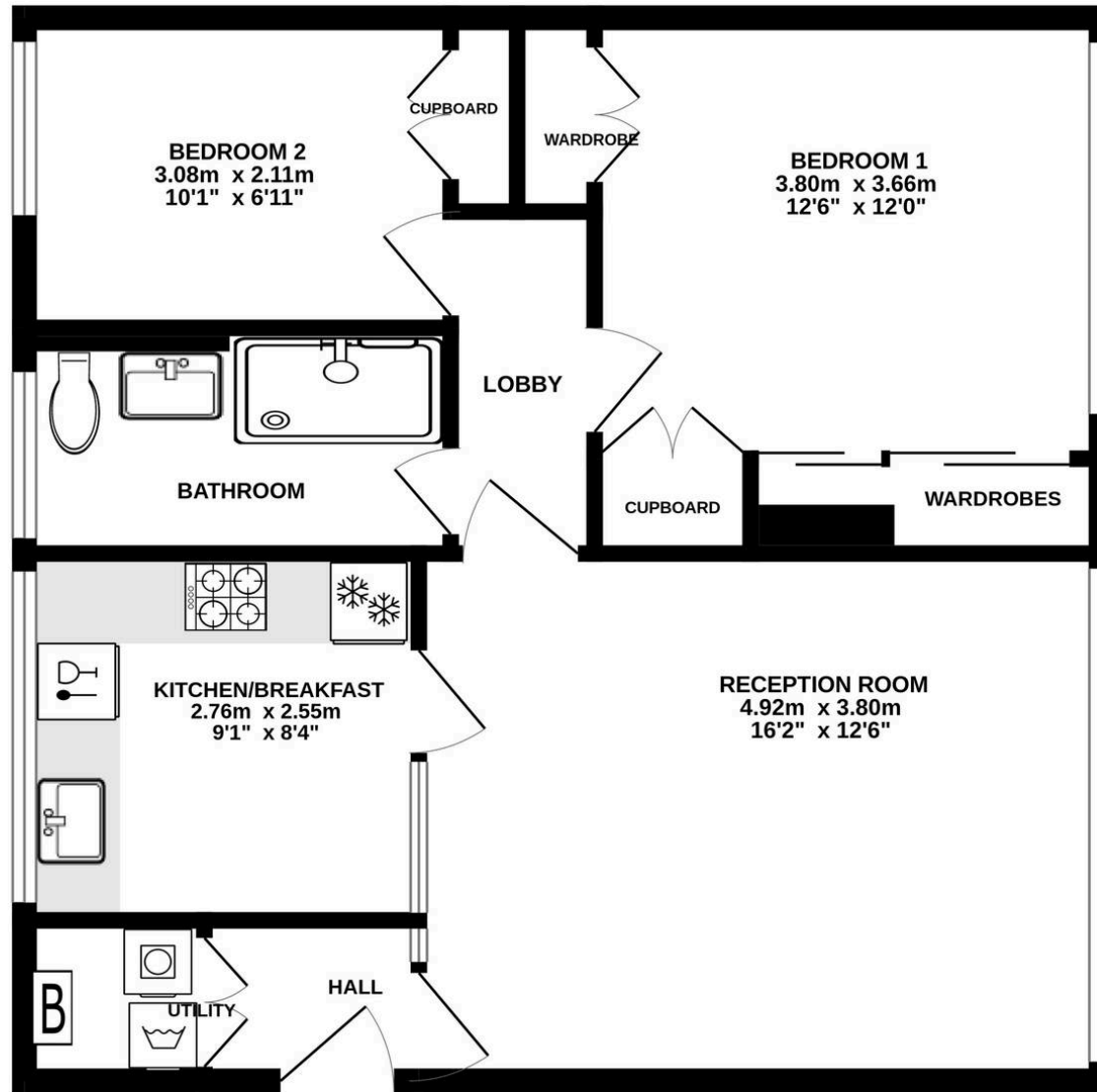
Comprehensively Upgraded 2 Bedroom Ground Floor Apartment - high end inventory and attention to detail throughout. Kitchen/breakfast with quartz tops, all NEFF appliances. Sep utility cupboard with Bosch appliances. Elegant wood flooring, Ecotec boiler & designer rads, SHARED FREEHOLD. Council Tax band: D

Tenure: Share of Freehold





GROUND FLOOR  
60.0 sq.m. (646 sq.ft.) approx.



TOTAL FLOOR AREA: 60.0 sq.m. (646 sq.ft.) approx.

Whilst every attempt has been made to ensure the accuracy of the floorplan contained here, measurements of doors, windows, rooms and any other items are approximate and no responsibility is taken for any error, omission or mis-statement. This plan is for illustrative purposes only and should be used as such by any prospective purchaser. The services, systems and appliances shown have not been tested and no guarantee as to their operability or efficiency can be given.

Made with Metropix ©2024

# 11 Marlowe Court Parkleys

Richmond, Richmond

- Comprehensively Upgraded 2 Bedroom Ground Floor Apartment refurbished to a high standard with designer style inventory and attention to detail throughout.
- Bright Reception over 16 ft x 12ft with elegant wood flooring and feature polished plaster wall. Inbuilt wardrobe cupboards and wood flooring to both bedrooms.
- Kitchen/breakfast room with quartz worktops and upstands and all NEFF appliances included.
- Double doors to separate utility cupboard off the hall with BOSCH washing machine and Bosch condensing dryer included.
- CONDENSING ECOTEC BOILER AND CONTEMPORARY RADIATORS ALL WITH VAILLANT SMART STATS.
- Grade 11 listed by English Heritage as the first 1950s "Span" development by innovative architect Eric Lyons.
- This apartment enjoys a particularly iconic entrance with floor to roof windows into a flagged atrium.
- In Richmond Conservation Area 67 with delightful shared lawns and courtyard to rear, but only moments from shops, deli, coffee shops and buses on Ham Parade.

Nestled in Richmond Conservation Area 67 with delightful shared lawns and courtyard to the rear, but only moments from shops, deli, coffee shops and other facilities on Ham Parade, 24 hour bus services to Richmond and Kingston, and close to the open spaces of picturesque Ham Common and path up to Richmond Park through Ham Common Woods.

