



16 Summerwood Gardens, Halsall
Ormskirk


**NICHOLLS
& BARNES**
ESTATE AGENTS

In Excess of £425,000

16 Summerwood Gardens

Halsall, Ormskirk

Immaculate 3-bed family home in Halsall's idyllic semi rural development. High-spec finish, modern kitchen, spacious lounge, media walls, garden bar, ample parking. Tranquil living with modern amenities nearby.

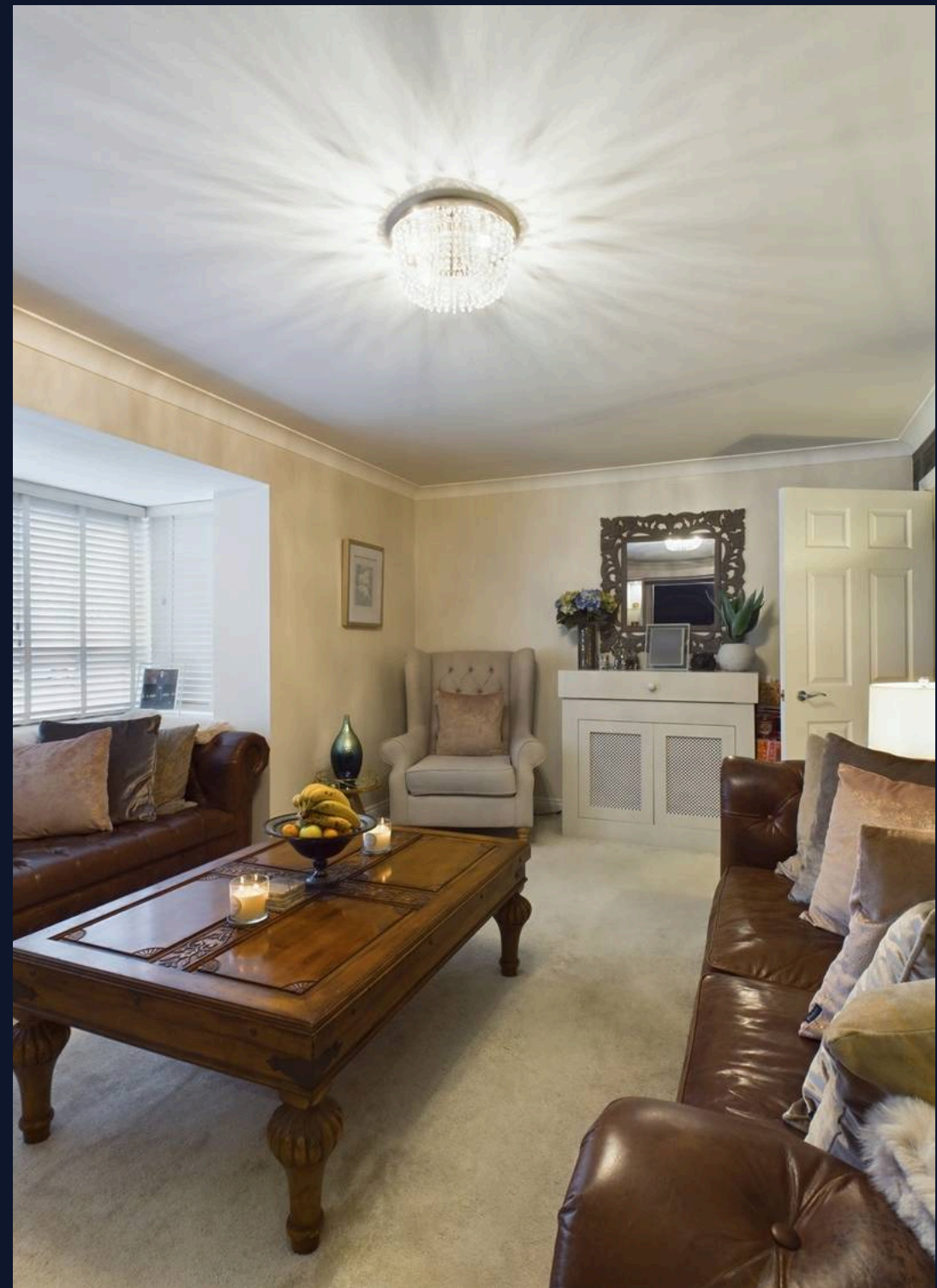
Council Tax band: D

Tenure: Freehold

EPC Energy Efficiency Rating: C

EPC Environmental Impact Rating: C

- Beautiful Semi Detached Family Home
- Three Double Bedrooms
- Spacious Kitchen/Diner/Family Room
- Separate Utility Room
- Multi-Fuel Burner
- Media Wall With Projection TV
- Bathroom/EnSuite/Downstairs WC
- Contemporary Finish Throughout
- Garden Bar/Entertainment Suite
- Idyllic Semi Rural Location

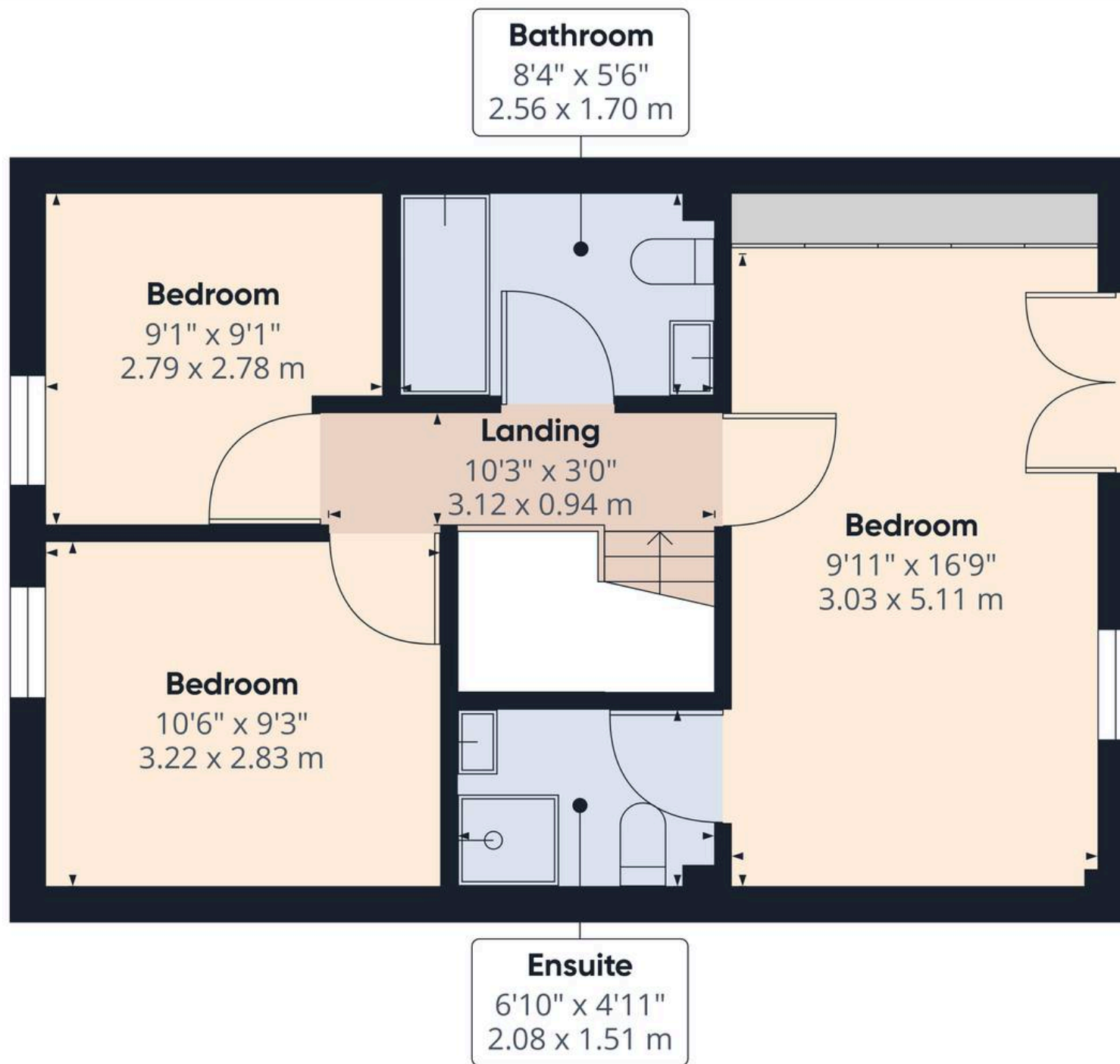


REAR GARDEN

DRIVEWAY

3 Parking Spaces





Approximate total area⁽¹⁾

473.62 ft²
44 m²

(1) Excluding balconies and terraces

While every attempt has been made to ensure accuracy, all measurements are approximate, not to scale. This floor plan is for illustrative purposes only.

Calculations are based on RICS IPMS 3C standard.

GIRAFFE 360



Floor 0 Building 2

Approximate total area⁽¹⁾

178.25 ft²

16.56 m²

(1) Excluding balconies and terraces

While every attempt has been made to ensure accuracy, all measurements are approximate, not to scale. This floor plan is for illustrative purposes only.

Calculations are based on RICS IPMS 3C standard.

GIRAFFE 360



Nicholls and Barnes

43 Houghton Street, Southport - PR9 0PG

01704 541 414 • sales@nichollsandbarnes.net • nichollsandbarnes.net



**NICHOLLS
& BARNES**

ESTATE AGENTS

