



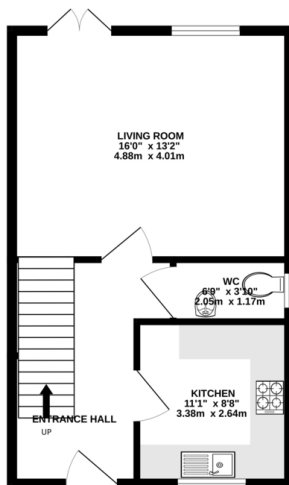
FOR SALE

3 Bed Detached House in Castle Hill Road, Anstey, LE7 7JY
£340,000

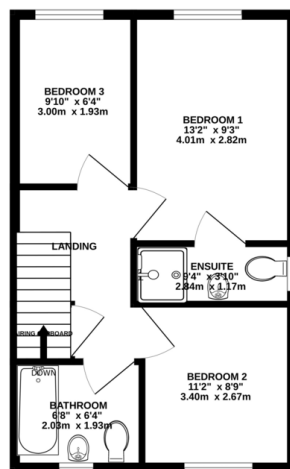
*** No Chain *** Built in 2018 this modern detached family home is ideally situated within a short walk to Castle Hill Country Park and Anstey village centre. The property is well maintained and well presented and comprises entrance hall, kitchen, downstairs w.c., lounge diner, three bedrooms, en-suite to master, family bathroom, gardens to the front and rear, off road parking and garage. A great all rounder!



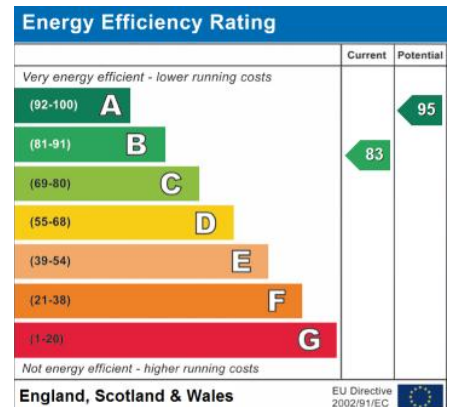
GROUND FLOOR
423 sq.ft. (39.3 sq.m.) approx.



1ST FLOOR
423 sq.ft. (39.3 sq.m.) approx.



TOTAL FLOOR AREA: 845 sq.ft. (78.5 sq.m.) approx.
Whilst every attempt has been made to ensure the accuracy of the floorplan contained herein, measurements of doors, windows, rooms and any other details are approximate and no responsibility is taken for any error, omission or misstatement. This plan is for illustrative purposes only and should be used as a guide for any prospective purchaser. The services, systems and appliances shown have not been tested and no guarantee is given as to their operability or efficiency can be given.
Made with Metrepx ©2014



- No Chain
- Fantastic Location
- Detached House
- Three Bedrooms
- En-Suite To Master
- Garage
- Not Overlooked
- Well Presented

Agents Note: Whilst every care has been taken to prepare these sales particulars, they are for guidance purposes only. All measurements are approximate are for general guidance purposes only and whilst every care has been taken to ensure their accuracy, they should not be relied upon and potential buyers are advised to recheck the measurements.

