

FINDING YOU A HOME SINCE 1972
B
FINDING YOU A HOME SINCE 1972



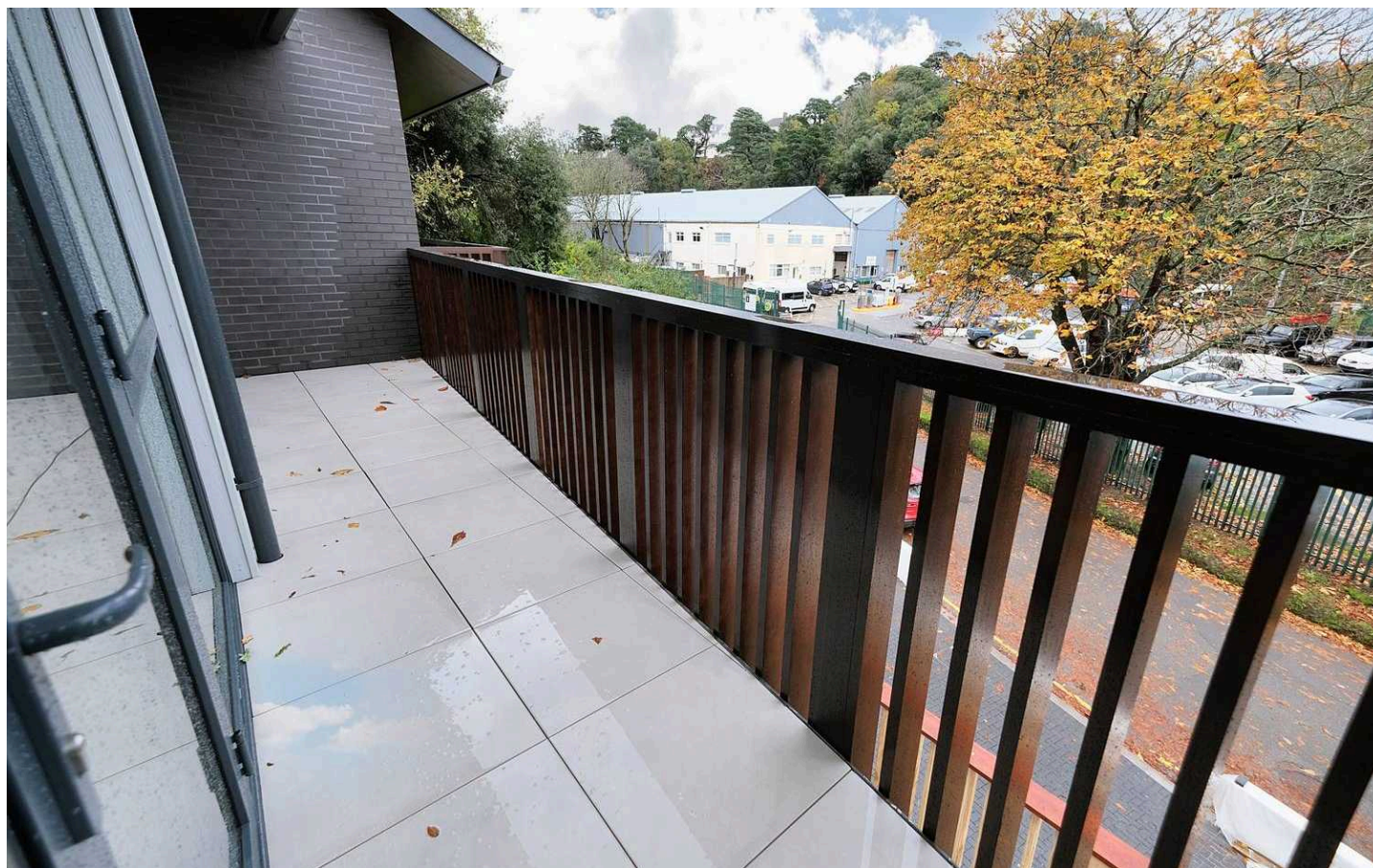
4 Hope Apts Bellozanne Valley, St Helier, Jersey
£645,000

BROADLANDS
FINDING YOU A HOME SINCE 1972

4 Hope Apartments Bellozanne Valley

St Helier, Jersey

- Stunning new build
- Two double bedroom apartment
- Close to town and the beach
- Finished to a high specification
- Parking for 1 plus private store
- Spacious 1019 sq ft
- Large roof garden and balcony
- Utility room
- Call Doug on 07700702585 or doug@broadlandsjersey.com
- Contact Nigel on 07797718233 or nigel@broadlandsjersey.com



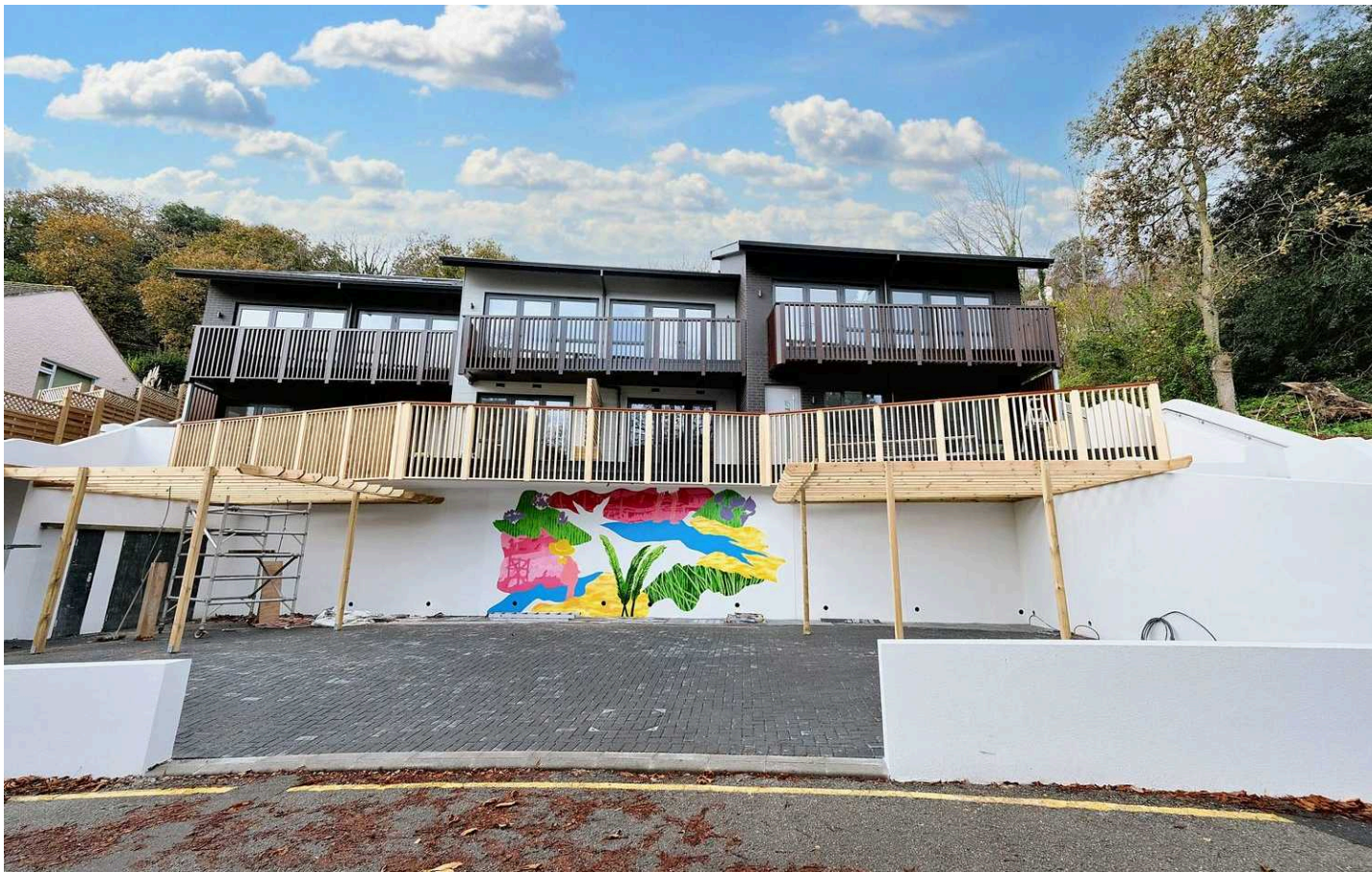
4 Hope Apartments Bellozanne Valley

St Helier, Jersey

Stunning new build two bedroom apartment with parking, balconies and a large roof garden. This inviting residence, one of only five properties, showcases a meticulous attention to detail and high-end finishes. Ideally positioned in the First Tower direction with only a short walk to the beach or Town. This extremely spacious apartment has 1019 sq ft of light and airy accommodation.

The property comprises of; an open plan living area with a fully integrated kitchen and patio doors opening on to your sunny balcony. Two bedrooms, two bathrooms with one being en-suite and a utility room. Stairs from your living area up to the floor above which would make an ideal lounge with patio doors opening on to your roof garden. The property comes with one designated parking space and a private store with visitor parking.





Living

Great size modern open plan living area with a fully integrated kitchen. Patio doors opening on to your private balcony. Additional snug area and utility room.

Sleeping

Two double bedrooms with fitted wardrobes. Main bedroom benefits from a small balcony and en suite. House bathroom.

Outside

Large roof terrace, with great views. Ideal for entertaining. Balcony of the living area. One designated parking space.

Services

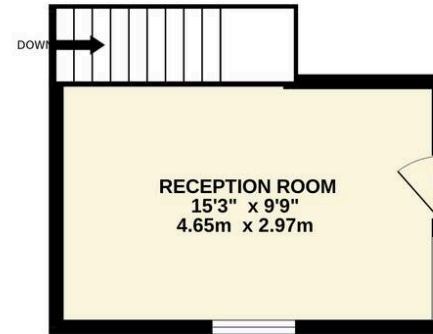
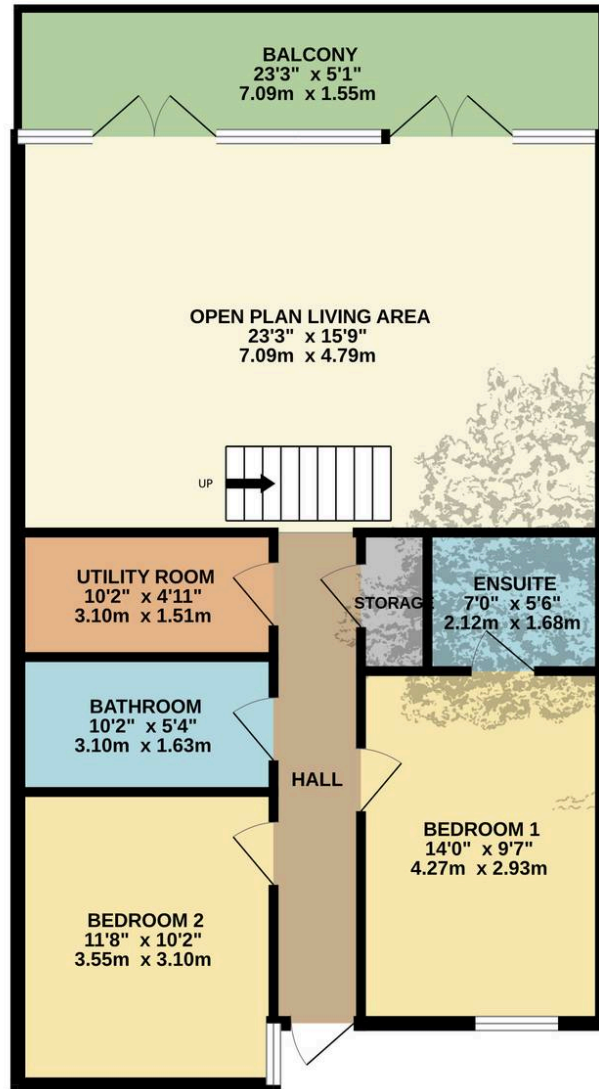
All main services. Double glazing. electric heating. Very efficient energy saving property, solar panels.





GROUND FLOOR
844 sq.ft. (78.4 sq.m.) approx.

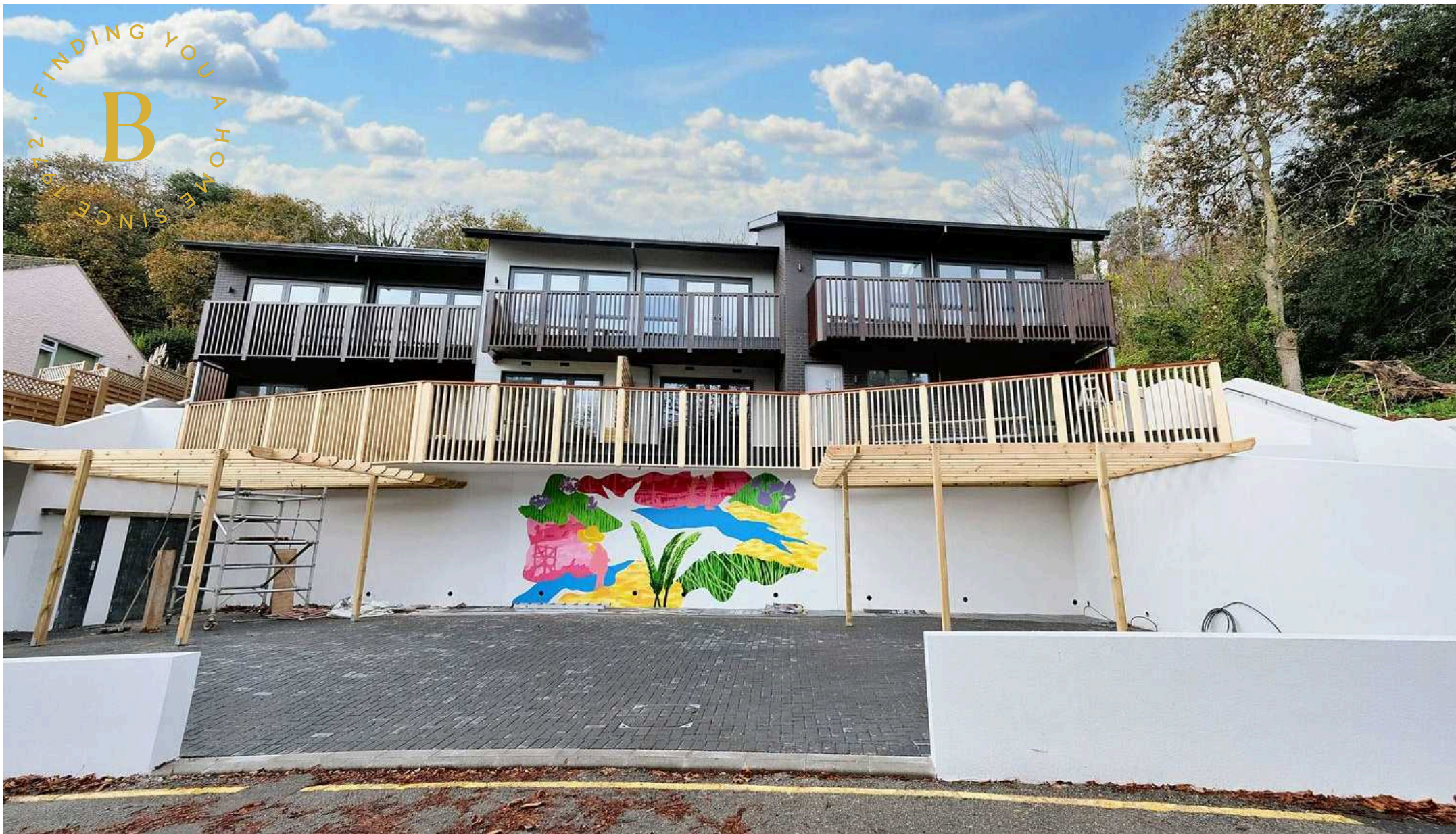
1ST FLOOR
175 sq.ft. (16.2 sq.m.) approx.



TOTAL FLOOR AREA : 1019 sq.ft. (94.7 sq.m.) approx.

Whilst every attempt has been made to ensure the accuracy of the floorplan contained here, measurements of doors, windows, rooms and any other items are approximate and no responsibility is taken for any error, omission or mis-statement. This plan is for illustrative purposes only and should be used as such by any prospective purchaser. The services, systems and appliances shown have not been tested and no guarantee as to their operability or efficiency can be given.

Made with Metropix ©2024



Broadlands

Broadlands Estates, Library Place - JE2 3NL

01534 880770 • enquiries@broadlandsjersey.com • www.broadlandsjersey.com/

BROADLANDS

FINDING YOU A HOME SINCE 1972