



Fernside, Lewes Road, Forest Row, RH18 5HD

Offers in Region of £550,000 Freehold

**MANSELL
McTAGGART**
Trusted since 1947

Fernside Lewes Road

Forest Row, Forest Row

An exceptionally spacious four bedroomed family home which must be viewed to appreciate the extensive floorspace available. The extended ground floor space comprises a large living room with woodburning stove, a generous kitchen/family room with access to the rear garden. Dating from the Victorian era and standing in one of the oldest parts of Forest Row the property comprises the end of a small terrace. The house has flexible family accommodation, extending in all to over seventeen hundred square feet of living space arranged over two floors. The property has a gas fired boiler supplying hot water and central heating, reclaimed mahogany flooring and double glazed sash windows. The accommodation is arranged over two floors and comprises three bedrooms, the main bedroom is double aspect and overlooks the meadow to the rear. The bathroom has been re-fitted and now comprises a free standing bath with a separate shower cubicle, hand basin, w.c. suite and a towel rail/radiator. The ground floor has a large open plan living room with an adjacent spacious kitchen/family room with doors opening to the garden. In addition there is a further bedroom/study on the ground floor with an adjacent shower room. There is also a useful covered store/workshop to the side accessed internally or externally from the house. There is a rear garden with a south/east aspect. Council Tax Band 'D' £2,641.87 (2024/25) EPC Rating 'D'

Council Tax band: D

Tenure: Freehold

- EXCEPTIONALLY SPACIOUS - MUST BE SEEN





Fernside Lewes Road

Forest Row, Forest Row

MUST BE SEEN This 4 bedroom family home. Impressive and exceptionally spacious Victorian home in the heart of Forest Row. Garden overlooking fields, gas heating, wood burners and family kitchen

Council Tax band: D

Tenure: Freehold

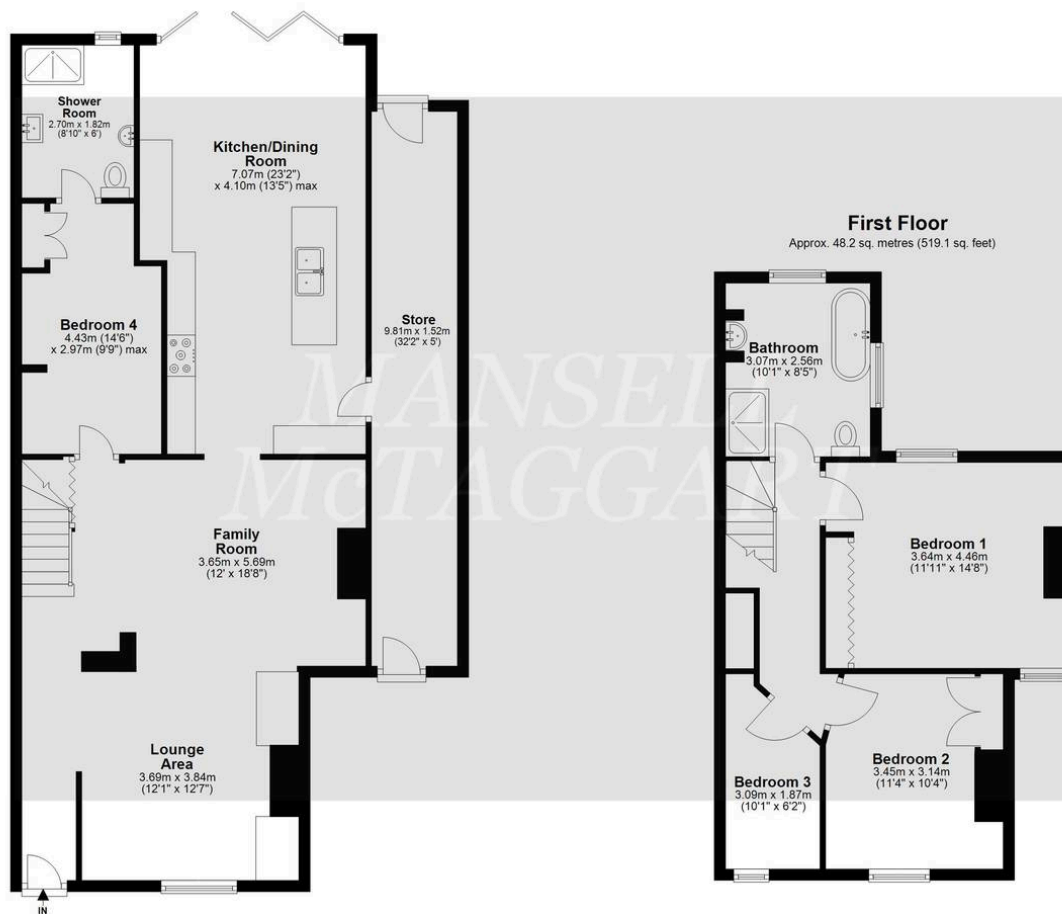
MUSE BE VIEWED to appreciate the accommodation offered in this charming end of terrace home.

- END OF TERRACE
- MODERNISED THROUGHOUT
- DATING FROM VICTORIAN ERA
- LARGE LIVING ROOM, KITCHEN/DINING ROOM
- EXCEPTIONALLY SPACIOUS
- 4 BEDROOMS
- 2 BATHROOMS
- CLOSE TO FOREST WAY
- GARDEN OVERLOOKING FIELDS
- GAS C.H & DOUBLE GLAZING



Ground Floor

Approx. 99.0 sq. metres (1065.2 sq. feet)



Total area: approx. 147.2 sq. metres (1584.3 sq. feet)

Whilst every attempt has been made to ensure the accuracy of the floor plan contained here, measurements of doors, windows, rooms and any other item are approximate and no responsibility is taken for any error, omission, or misstatement. This plan is for illustrative purposes only and should only be used as such by any prospective purchaser.
Plan produced using PlanUp.

Mansell McTaggart Forest Row

Mansell McTaggart, Lower Road – RH18 5HE

01342 826682

fr@mansellmctaggart.co.uk

www.mansellmctaggart.co.uk/branch/forestrow/

Consumer Protection from Unfair Trading Regulations 2008 We have not tested any apparatus, equipment, fixtures, fittings or services and so cannot verify that they are in working order or fit for purpose. You are advised to obtain verification from your solicitor or surveyor. References to the tenure of a property are based on information supplied by the seller. We have not had sight of the title documents and a buyer is advised to obtain verification from their solicitor. Items shown in photographs are not included unless specifically mentioned within the sales particulars, but may be available by separate negotiation. We advise you to book an appointment to view before embarking on any journey to see a property, and check its availability.