

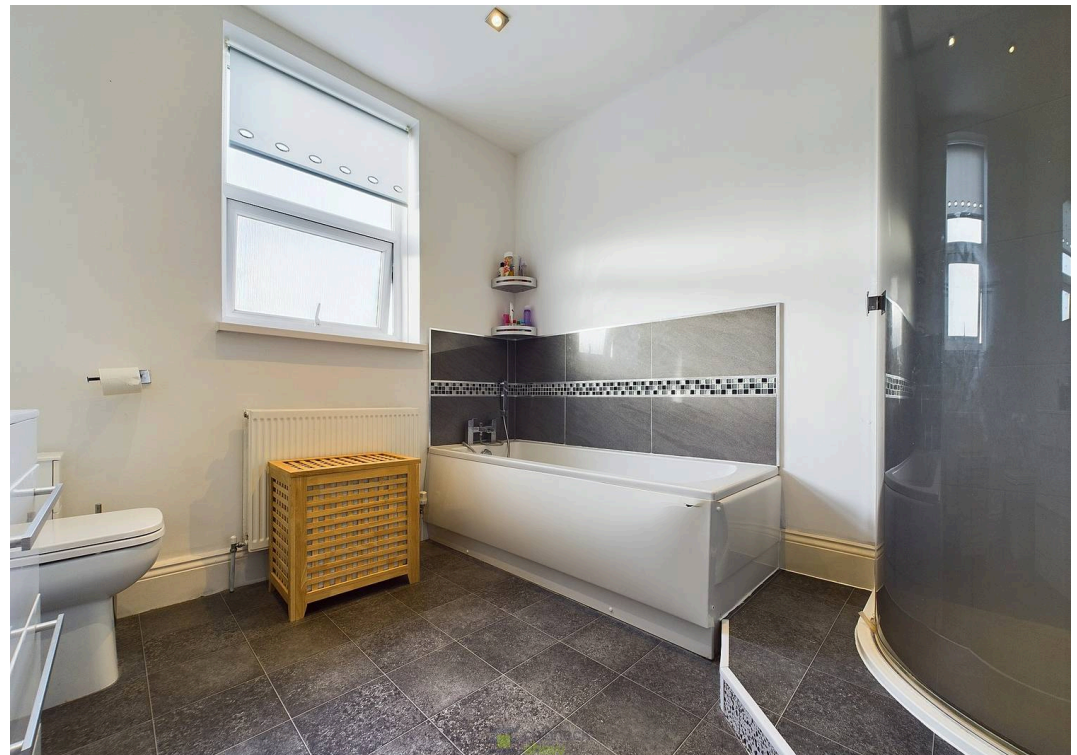
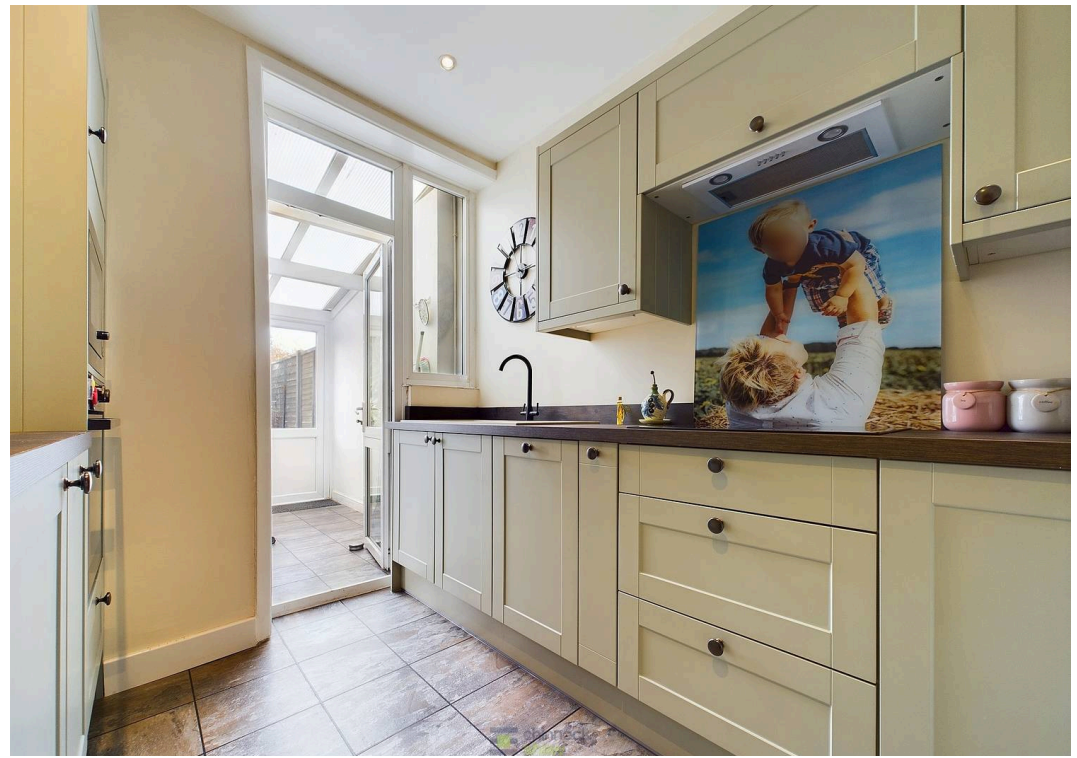


1 Westover Road, Baffins

Portsmouth

Offers in Region of £260,000





1 Westover Road

Baffins, Portsmouth

This beautifully presented house in a sought-after location offers light-filled spaces and excellent storage.

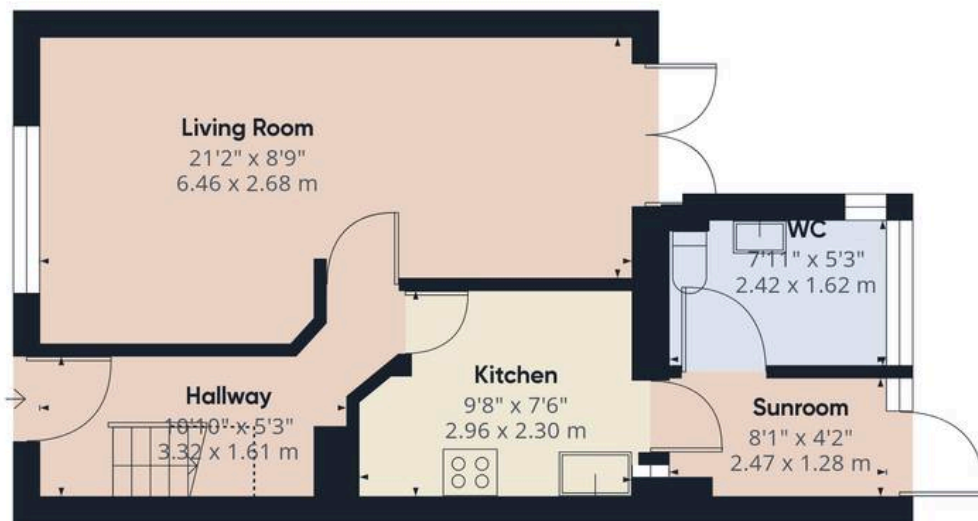
The entrance leads to a hallway connecting to the kitchen and living room. The dual-aspect living area is bright, with defined zones seamlessly connected by beautiful wooden flooring and contemporary decor. Patio doors bring in plenty of natural light and open to the garden. Adjacent is a modern shaker-style kitchen with integrated appliances and wooden countertops. A door leads to a utility space with room for an undercounter fridge and freezer, as well as a downstairs toilet with laundry facilities.

Upstairs are two bedrooms: a spacious double at the front with built-in wardrobes, and a smaller double at the back with an original cupboard, additional storage, and a view of the garden. The charming garden features a patio, decking, a lawn, a shed, and mature planting along the borders. This is a stylish home, one not to be missed

Council Tax band: B

Tenure: Freehold





Ground Floor



Floor 1

Approximate total area⁽¹⁾

739.58 ft²
68.71 m²

Reduced headroom

7.88 ft²
0.73 m²

(1) Excluding balconies and terraces

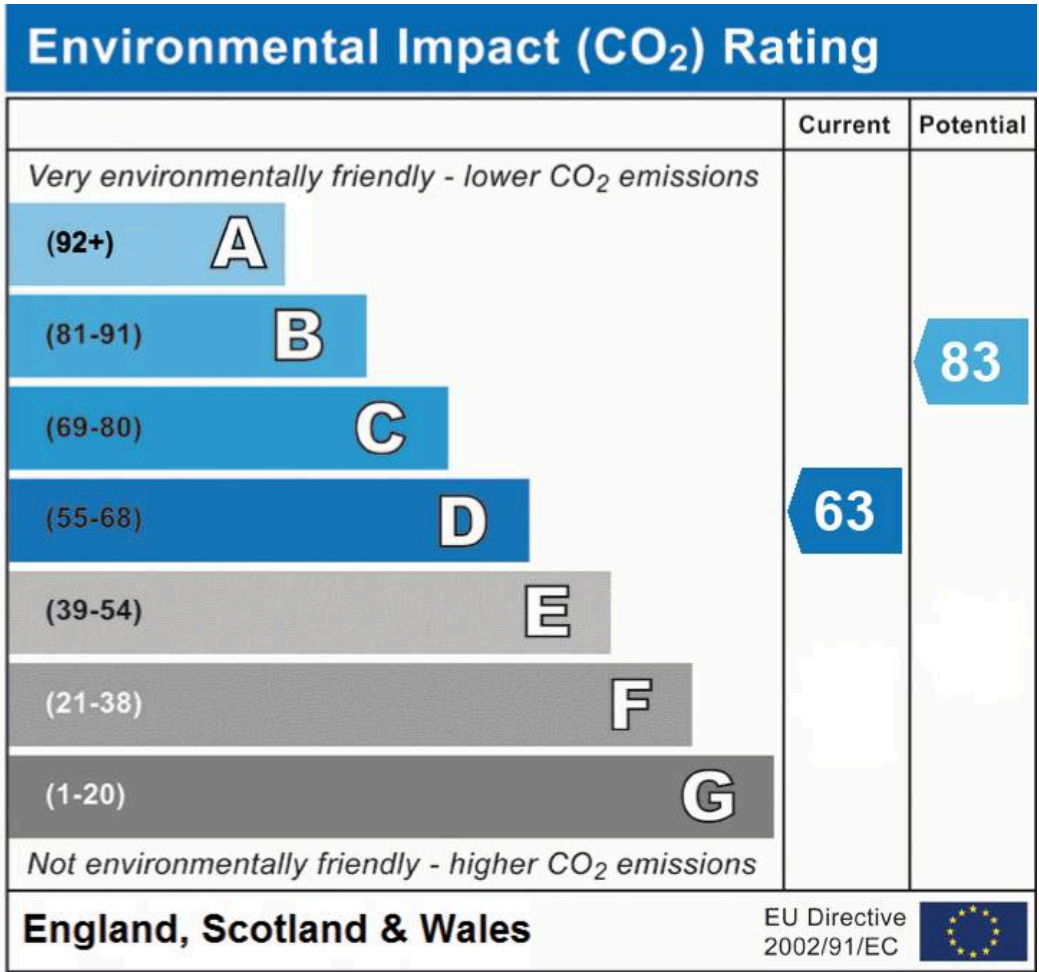
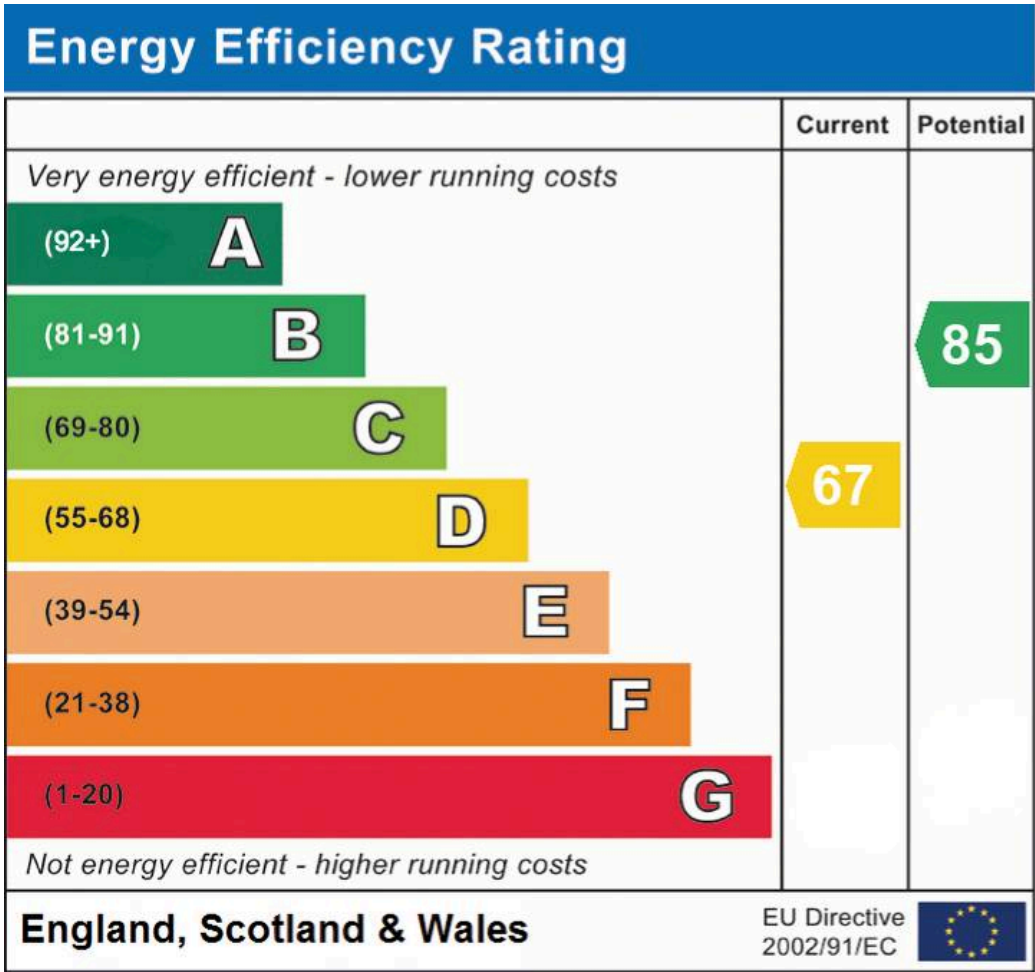
Reduced headroom

..... Below 5 ft/1.5 m

While every attempt has been made to ensure accuracy, all measurements are approximate, not to scale. This floor plan is for illustrative purposes only.

Calculations are based on RICS IPMS 3C standard.

GIRAFFE 360



Chinneck Shaw

Bridge House, Milton Road, Portsmouth – PO3 6AN

023 9282 6731

hello@chinneckshaw.co.uk

www.chinneckshaw.co.uk/

Chinneck Shaw, Bridge House, Milton Road, PO3 6AN Consumer Protection from Unfair Trading Regulations 2008: These details are for guidance only and complete accuracy cannot be guaranteed. If there is any point which is of particular importance, verification should be obtained. They do not constitute a contract or part of a contract. All measurements are approximate. No guarantee can be given with regard to planning permissions or fitness for purpose. No apparatus, equipment, fixture or fitting has been tested. Items shown in the photographs are NOT necessarily included. Interested Parties are advised to check availability and make an appointment to view before travelling to see a property.