



Unit 8 Townsend Piece

Bicester Road, Aylesbury, HP19 8BQ

INDUSTRIAL WORKSHOP / STORAGE UNIT

1,186 sq ft
(110.18 sq m)

- Mezzanine Storage/Office
- 2 X WCs, teapoint facility
- 3 Phase Electrics / Gas Supply
- Roller Shutter and Pedestrian Entrance
- 6 parking spaces

Unit 8 Townsend Piece, Bicester Road, Aylesbury, HP19 8BQ

Summary

Available Size	1,186 sq ft
Price	Offers in excess of £310,000
Rates Payable	£5,364.25 per annum 2023
Rateable Value	£10,750
VAT	To be confirmed
Legal Fees	Each party to bear their own costs
EPC Rating	D (88)

Description

Unit 8 Townsend Piece is a modern, single storey industrial unit within a terrace of eight and is conveniently located within direct access from the A41 Bicester Road, half a mile north west of Aylesbury town centre. Townsend Piece comprises a small development with a number of industrial, commercial and trade counter type uses. Unit 8 measures 980 sq ft with 6 car parking spaces and is available for sale.

Location

Conveniently located within the Townsend Piece Development with direct access from the A41 Bicester Road, within half a mile north west of Aylesbury town centre. Townsend Piece comprises a small development with a number of industrial, commercial and trade counter type uses. Aylesbury is the County Town of Buckinghamshire and is located approximately 44 miles northwest of central London 23 miles from Oxford and 15 miles south of Milton Keynes. The town is situated on the junctions of the A41 the A413 and A418 providing easy access to the M40 M1 and M25 motorways all of which are within a 20 minute drive.

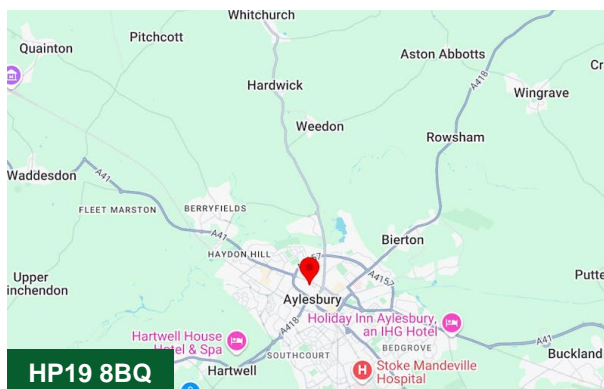
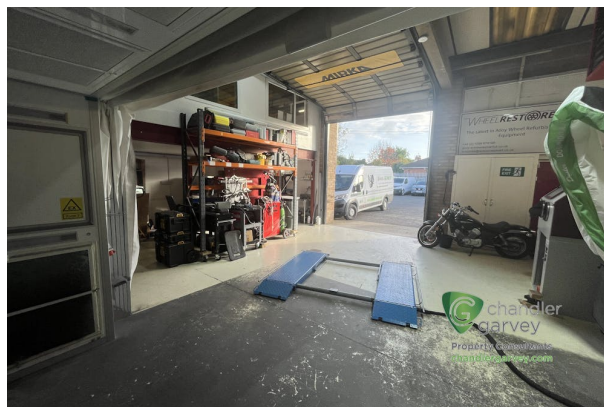
The town benefits from a direct rail system to London Marylebone with a journey time of approximately 55 minutes

Terms

Available for sale freehold.

Money Laundering and Identity Checks

Money Laundering Regulations require Chandler Garvey to conduct checks on all tenants. Prospective tenants will need to provide proof of identity and residence.



Viewing & Further Information



James Garvey

01494 460258 | 07471996320

jg@chandlergarvey.com



